



ENGLISH

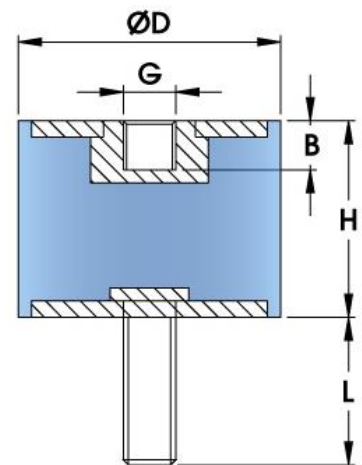
EPDM Male/Female Cylindrical Bobbins

Cylindrical Bobbin mounts are simple and cost-effective vibration isolators that can be used in either compression and/or shear. This EPDM version is superior to Natural Rubber due to its better ozone and weathering resistance.

Applications:

- Static generator engines
- Compressors
- Motors

H = Height
D = Diameter
G = Tread
L = Stud Length



RS Part Number	Hardness (ShA)	D (mm)	H (mm)	G x L (mm)	Max Compression Load (kg)	Max Shear Load (kg)
1961345	60	15	10	M4X10	16.6	5.2