



Blind rivet nuts for internal threads



Two functions:
riveting and screwing

New threads?

For internal threads of components with small wall thicknesses.

Your benefits

- Stable thread on thin-walled components
- Installation in case of one-sided accessibility (blind assembly)
- Easy processing in metallic or plastic components et al.
- Repeated screwing
- No additional finishing even with coated or painted components

The setting of RIVKLE® blind rivet nuts is often the only fastener solution for hollow sections, housings or where access is limited to one side of a component.

Information provided on the following pages!



Blind rivet nuts with extra-small countersunk head, steel Dimensions M 3, M 4, M 5, M 6

Content:

- Each 50 blind rivet nuts M 3 – M 6
- 1 plier-type setting tool BRK
- 4 exchange units for M 3, M 4, M 5 and M 6
(including mandrel and nosepiece)

Size	Art. no.	Total number of pieces	Number of RIVKLE® plus blind rivet nuts	Price in €
M 3 – M 6	2351 190 0501/00	209	200	on request



Blind rivet nuts with flat head, steel Dimensions M 4, M 5, M 6

Content :

- Each 50 blind rivet nuts M 4 – M 6
- 1 plier-type setting tool BRK
- 4 exchange units for M 3, M 4, M 5 and M 6
(including mandrel and nosepiece)

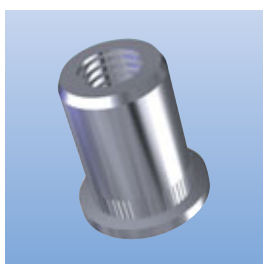
Size	Art. no.	Total number of pieces	Number of RIVKLE® plus blind rivet nuts	Price in €
M 4 – M 6	2351 190 0502/00	159	150	on request

RIVKLE® plus blind rivet nuts – Refill packs



RIVKLE® plus blind rivet nuts steel and stainless steel

Content:
Each 100 blind rivet nuts



Flat heat, steel

Size	Art. no.	Number of RIVKLE® plus blind rivet nuts	Price in €
M 4*	2330 704 0230/51	100	on request
M 5*	2330 705 0230/51	100	on request
M 6*	2330 706 0230/51	100	on request
M 8**	2330 708 0230/01	100	on request
M 10**	2330 710 0235/01	100	on request



Flat heat, stainless steel

Size	Art. no.	Number of RIVKLE® plus blind rivet nuts	Price in €
M 4*	2330 604 0230/01	100	on request
M 5*	2330 605 0233/01	100	on request
M 6*	2330 606 0233/01	100	on request
M 8*	2330 608 0233/01	100	on request



Extra small countersunk head, steel

Size	Art. no.	Number of RIVKLE® plus blind rivet nuts	Price in €
M 3*	3436 703 0020/01	100	on request
M 4*	3436 704 0230/51	100	on request
M 5*	3436 705 0230/51	100	on request
M 6*	3436 706 0230/51	100	on request
M 8*	3436 708 0230/51	100	on request
M 10**	3436 710 0235/01	100	on request



Extra small countersunk head, stainless steel

Size	Art. no.	Number of RIVKLE® plus blind rivet nuts	Price in €
M 4*	3436 604 0230/01	100	on request
M 5*	3436 605 0233/01	100	on request
M 6*	3436 606 0233/01	100	on request
M 8*	3436 608 0233/01	100	on request

*Packaging: bag

**Packaging: carton

RIVKLE® plus blind rivet nuts – Tools

Plier-type setting tool BRK

Content:

Tool, exchange unit M 3 – M 6

Operation:

The rivet is spun on and off using a knurled thumb nut. Setting is done by the lever effect of the pliers.

Description	Size	Art. no.	Price in €
Tool BRK	–	2351 190 0000/00	on request
Exchange unit*	M 3	2351 190 3001/00	on request
Exchange unit*	M 4	2351 190 4001/00	on request
Exchange unit*	M 5	2351 190 5001/00	on request
Exchange unit*	M 6	2351 190 6001/00	on request

*An exchange unit includes a mandrel and a nosepiece.


Single-size hand-operated setting tool type S

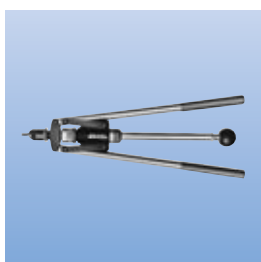
Content:

Tool with exchange unit, crank, socket

Operation :

Single-sized riveting tool with threaded drive. The RIVKLE® blind rivet nuts are spun on by hand. Setting is achieved using a crank and socket.

Description	Size	Art. no.	Price in €
Tool S 5	M 5	2353 010 5000/00	on request
Tool S 6	M 6	2353 010 6000/00	on request
Tool S 8	M 8	2353 010 8000/00	on request
Tool S 10	M 10	2353 011 0000/00	on request


Lever-type setting tool ZH 510

Content:

Tool without mandrel and a nosepiece

Operation:

The rivet is spun on and off the mandrel by drilling. Crimping by lever action. Practical and quick stroke adjustment.

Description	Size	Art. no.	Price in €
Basic tool ZH 510	–	2351 030 0000/10	on request
Mandrel	M 5	2351 030 5020/10	on request
Mandrel	M 6	2351 030 6020/10	on request
Mandrel	M 8	2351 030 8020/10	on request
Mandrel	M 10*	2351 031 0020/10	on request
Nosepiece	M 5	2351 030 5030/10	on request
Nosepiece	M 6	2351 030 6030/10	on request
Nosepiece	M 8	2351 030 8030/10	on request
Nosepiece	M 10*	2351 030 1030/10	on request

*only aluminium

Böllhoff Repair Solutions



Another Repair Solution is offered by HELICOIL® repair kits and repair range kits for thick walled components.

Old component – new thread?

Thread damage can occur everywhere!

The solution: HELICOIL® plus.

Easy to handle – and a lasting and reliable result!

HELICOIL® plus provides high-strength fastenings.



Your benefits

- Easy and quick repair
- Safe installation with mandrel
- High-strength threads
- Corrosion and temperature-resistant
- HELICOIL® plus – the original of a well proven technology



Metric HELICOIL® plus repair kits*

- M 2 – M 36 x 1.5
- Oil drain threads M 12 x 1.5, M 14 x 1.5 and M 16 x 1.5
- Spark plug threads M 10 x 1, M 12 x 1.25 and M 14 x 1.25
- Lambda probe threads M 18 x 1.5



Metric HELICOIL® plus repair range kits**

- Six different kits:
- M 2.5 – M 6, M 4 – M 10, M 5 – M 12 and M 6 – M 14 x 1.25
 - Spark plug repair range kit M 10 x 1 – M 14 x 1.25
 - Oil drain repair range kit M 12 x 1.5, M 14 x 1.5, M 16 x 1.5



Imperial HELICOIL® plus repair kits*

- UNC 2-56 to UNC 1 1/2"-6
- UNF 4-48 to UNF 1"-12
- BSW 3/16"-24 to BSW 1 1/2"-6
- BSF 1/4"-26 to BSF 1"-10
- G 1/8"-28 to G 1"-11



Imperial HELICOIL® plus / HELICOIL® repair range kits**

- Five different kits:
- UNC (UNC 5-40 to UNC 12-24 and UNC 1/4"-20 to UNC 1/2"-13)
 - UNF (UNF 4-48 to UNF 1/4"-28 and UNF 1/4"-28 to UNF 1/2"-20)
 - BSW (BSW 1/4"-20 to BSW 1/2"-12)

Further information on our repair kits and repair range kits are provided in our HELICOIL® catalogue for thread repair no. 0180!

* A repair kit contains thread inserts of one dimension in three different lengths.

**A repair range kit contains thread inserts of various dimensions and lengths.