

Ø 22.3 mm

Illustration	Lens Colour	Lamp Voltage	Possible Contact Configuration	Part Number
--------------	-------------	--------------	--------------------------------	-------------

Illuminated Pushbutton_JRT (Charcoal Bezel)

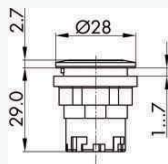
IP65
IP67



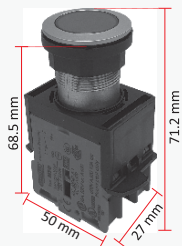
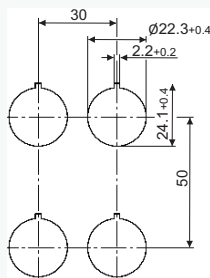
6 mm



Dimensional Drawing:



Cut-out Hole Drawing:



Award:



reddot award 2018 winner

1NO Momentary/Spring Return - 24V

Red	24V	1NO	-	-	GS1 JRT-10-24-RT
Green	24V	1NO	-	-	GS1 JRT-10-24-GN
Yellow	24V	1NO	-	-	GS1 JRT-10-24-GB
Blue	24V	1NO	-	-	GS1 JRT-10-24-BL
Clear	24V	1NO	-	-	GS1 JRT-10-24-KL

1NC Momentary/Spring Return - 24V

Red	24V	-	1NC	-	GS1 JRT-01-24-RT
Green	24V	-	1NC	-	GS1 JRT-01-24-GN
Yellow	24V	-	1NC	-	GS1 JRT-01-24-GB
Blue	24V	-	1NC	-	GS1 JRT-01-24-BL
Clear	24V	-	1NC	-	GS1 JRT-01-24-KL

1NO 1NC Momentary/Spring Return - 24V

Red	24V	-	-	1NO 1NC	GS1 JRT-11-24-RT
Green	24V	-	-	1NO 1NC	GS1 JRT-11-24-GN
Yellow	24V	-	-	1NO 1NC	GS1 JRT-11-24-GB
Blue	24V	-	-	1NO 1NC	GS1 JRT-11-24-BL
Clear	24V	-	-	1NO 1NC	GS1 JRT-11-24-KL

2NO 2NC Momentary/Spring Return - 24V

Red	24V	-	-	2NO 2NC	GS1 JRT-22-24-RT
Green	24V	-	-	2NO 2NC	GS1 JRT-22-24-GN
Yellow	24V	-	-	2NO 2NC	GS1 JRT-22-24-GB
Blue	24V	-	-	2NO 2NC	GS1 JRT-22-24-BL
Clear	24V	-	-	2NO 2NC	GS1 JRT-22-24-KL

Illuminated Pushbutton_JRF (Charcoal Bezel)

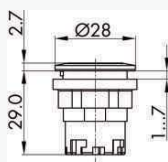
IP65
IP67



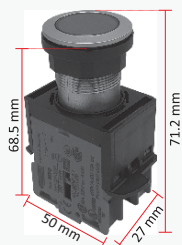
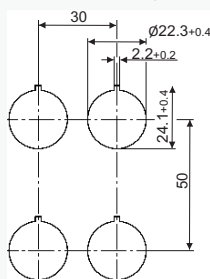
6 mm



Dimensional Drawing:



Cut-out Hole Drawing:



Award:



reddot award 2018 winner

1NO Maintained/Latching - 24V

Red	24V	1NO	-	-	GS1 JRF-10Z-24-RT
Green	24V	1NO	-	-	GS1 JRF-10Z-24-GN
Yellow	24V	1NO	-	-	GS1 JRF-10Z-24-GB
Blue	24V	1NO	-	-	GS1 JRF-10Z-24-BL
Clear	24V	1NO	-	-	GS1 JRF-10Z-24-KL

1NC Maintained/Latching - 24V

Red	24V	-	1NC	-	GS1 JRF-01Z-24-RT
Green	24V	-	1NC	-	GS1 JRF-01Z-24-GN
Yellow	24V	-	1NC	-	GS1 JRF-01Z-24-GB
Blue	24V	-	1NC	-	GS1 JRF-01Z-24-BL
Clear	24V	-	1NC	-	GS1 JRF-01Z-24-KL

1NO 1NC Maintained/Latching - 24V

Red	24V	-	-	1NO 1NC	GS1 JRF-11Z-24-RT
Green	24V	-	-	1NO 1NC	GS1 JRF-11Z-24-GN
Yellow	24V	-	-	1NO 1NC	GS1 JRF-11Z-24-GB
Blue	24V	-	-	1NO 1NC	GS1 JRF-11Z-24-BL
Clear	24V	-	-	1NO 1NC	GS1 JRF-11Z-24-KL

2NO 2NC Maintained/Latching - 24V

Red	24V	-	-	2NO 2NC	GS1 JRF-22Z-24-RT
Green	24V	-	-	2NO 2NC	GS1 JRF-22Z-24-GN
Yellow	24V	-	-	2NO 2NC	GS1 JRF-22Z-24-GB
Blue	24V	-	-	2NO 2NC	GS1 JRF-22Z-24-BL
Clear	24V	-	-	2NO 2NC	GS1 JRF-22Z-24-KL

Illustration	Lens Colour	Lamp Voltage	Possible Contact Configuration			Part Number
--------------	-------------	--------------	--------------------------------	--	--	-------------

Pilot Light_JRN (Charcoal Bezel)



24V

● Red	24V	-	-	-	GS1 JRN-24-RT
● Green	24V	-	-	-	GS1 JRN-24-GN
● Yellow	24V	-	-	-	GS1 JRN-24-GB
● Blue	24V	-	-	-	GS1 JRN-24-BL
○ Clear	24V	-	-	-	GS1 JRN-24-KL

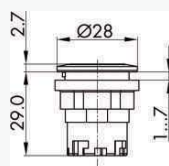
220V

● Red	220V	-	-	-	GS1 JRN-220-RT
● Green	220V	-	-	-	GS1 JRN-220-GN
● Yellow	220V	-	-	-	GS1 JRN-220-GB
● Blue	220V	-	-	-	GS1 JRN-220-BL
○ Clear	220V	-	-	-	GS1 JRN-220-KL

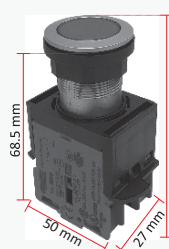
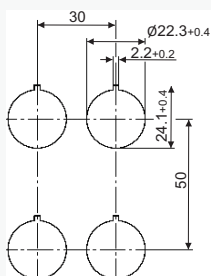
Dual Colour - 24V

● Red-Green	24V	-	-	-	GS1 JRN-24-KLRG
-------------	-----	---	---	---	------------------------

Dimensional Drawing:



Cut-out Hole Drawing:



Award:



reddot award 2018 winner

Technical Specification

General Data:

Front Dimensions:	Ø 28 mm
Panel Cut-out:	Ø 22.3 mm
Front Bezel Height:	2 mm
Operating Travel:	6 mm
IP Rating:	IP65
Illumination:	Yes
Contact Type:	Modular Contact Block
Protection Class:	II (protective insulation)
Connection Type:	Screw Connection 2 x 2.5 mm²
Contact Material:	AgNi

Max. Storage Temperature:	-50°C ... 85°C
Max. Operating Temperature:	-50°C ... 85°C, without illumination
	-30°C ... 65°C, using LEDs
Mechanical Life:	1 m switching cycles
Electrical Life:	1 m operations at rated load
Contact Resistance NO:	<20 mOhm
Contact Resistance NC:	<20 mOhm
Min. Current:	1 mA (under laboratory conditions)
Min. Voltage:	5V

	Alternate Current	Direct Current
Rated Insulation Voltage:	600V	600V
Rated Operating Voltage:	240V / 440V	440V / 250V / 125V / 60V / 24V
Rated Operating Current:	3A / 1.6A	0.12A / 0.2A / 0.4A / 1A / 2A

Approvals:



Use & Applications:

- ✓ The actuators are designed for exclusive applications as well as use in harsh environments.
- ✓ Flexible contact configuration and ease of assembly.
- ✓ The units can be used in every field of application.
- ✓ The control units are designed to accept a clearly visible marking, easy to produce and comprising a variety of symbols and inscriptions.
- ✓ Multiple standards nameplates are available and also according to user's requirements.