

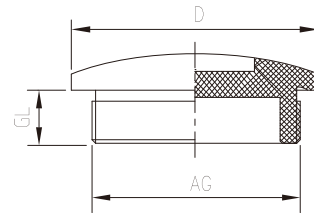
## RPK-M Nylon Grey Screw Plug + Nut 1)

Thread Specification	Material Grey RAL7035	(AG) mm	(D) mm	(H) mm	Reference (without nut)	Reference (with nut)
M12×1.5	Nylon PA6	12	16	8	9HT RPK-M12-GY	9HT RPK-M12-GY-M
M16×1.5	Nylon PA6	16	20	8	9HT RPK-M16-GY	9HT RPK-M16-GY-M
M20×1.5	Nylon PA6	20	25	9	9HT RPK-M20-GY	9HT RPK-M20-GY-M
M25×1.5	Nylon PA6	25	30	11	9HT RPK-M25-GY	9HT RPK-M25-GY-M
M32×1.5	Nylon PA6	32	39	11	9HT RPK-M32-GY	9HT RPK-M32-GY-M
M40× 1.5	Nylon PA6	40	46	13	9HT RPK-M40-GY	9HT RPK-M40-GY-M
M50×1.5	Nylon PA6	50	57	15	9HT RPK-M50-GY	9HT RPK-M50-GY-M
M63×1.5	Nylon PA6	63	70	15	9HT RPK-M63-GY	9HT RPK-M63-GY-M



**RPK-M**

- Material : PA Material, V2 , Acc. to UL94
- Color: Black (BL) & Grey (GY)
- IP Grade: O-ring, IP68
- Temperature Limited: -40 C -100 C
- ProductsFeatures:Non-halogen,non-phosphor, non-cadmium.approved by ROHS



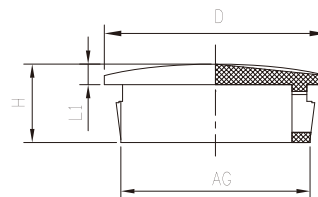
## RPM-M Nickel Plated Brass Screw Plug+ Nut 1)

Thread Specification	(AG) mm	(L1) mm	(H) mm	(D) mm	Wench Size (SW)	Reference (without nut)	Reference (with nut)
M12×1.5	12	6	9	14	14	9HT RPM.C-M12-C	9HT RPM.C-M12-C-OM
M16×1.5	16	7	10	18	20	9HT RPM.C-M16-C	9HT RPM.C-M16-C-OM
M20×1.5	20	7	10	23	24	9HT RPM.C-M20-C	9HT RPM.C-M20-C-OM
M25×1.5	25	7	10	28	30	9HT RPM.C-M25-C	9HT RPM.C-M25-C-OM
M32×1.5	32	8	12	35	40	9HT RPM.C-M32-C	9HT RPM.C-M32-C-OM
M40× 1.5	40	9	12	44	50	9HT RPM.C-M40-C	9HT RPM.C-M40-C-OM
M50×1.5	50	9	15	54	55	9HT RPM.C-M50-C	9HT RPM.C-M50-C-OM
M63×1.5	63	10	16	67	67	9HT RPM.C-M63-C	9HT RPM.C-M63-C-OM



**RPM.C-M**

- Material : Brass Nickel-plated(C)
- Sealing Material:EPDM,SI.
- IP Grade: Clamping range, O-ring, IP68



Note:

1) Made under OEM arrangement by reputable cable gland manufacturer