

FEATURES

- Rated currents from 20A
- Designed for enhanced filtering
- Designed for enhanced filtering
- Excellent differential and common-mode attenuation

RS PRO Power Line Filters

RS Stock No.: 2378723, 2378724



RS Professionally Approved Products bring to you professional quality parts across all product categories. Our product range has been tested by engineers and provides a comparable quality to the leading brands without paying a premium price.

Product Description

- Electrical and electronic equipment
- Medical equipment
- Datacom equipment
- Office automation equipment

General Specifications

Designed 2 stage enhanced filtering to prevent the power supply may produce interference to the device Various terminal options allow you to select. There are a variety of parts and combinations to meet different customer's EMC tests Customized products according to customer's requirements

Mechanical Specifications

<i>size</i>	63X51X38mm (L X W X H)
<i>weight</i>	0.240kgs

Electrical Specifications

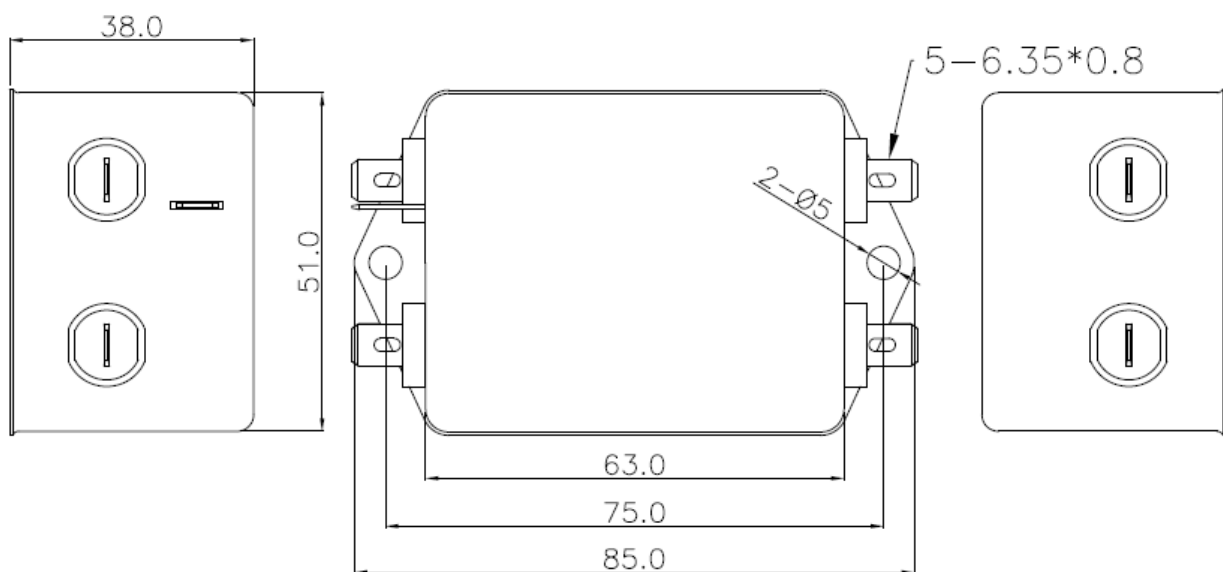
Rated Voltage Max.	250VAC,50/60Hz
Operating frequency	DC to 400Hz
Rated currents	10A@40°C
Hipot Rating	L-N 1450VDC, L/N-G 2000VAC/2250VDC

Protection Category

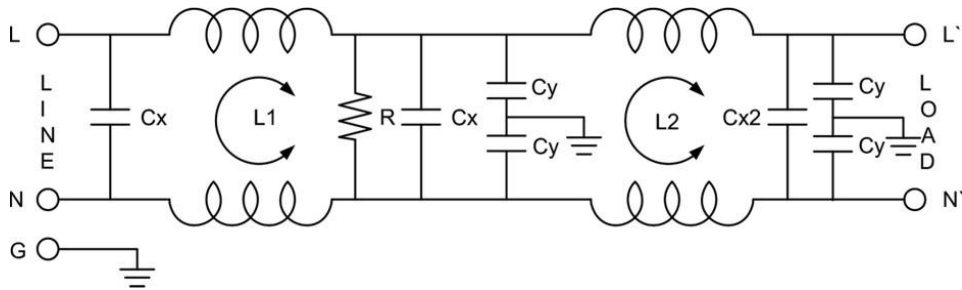
according to IEC 60529 IP40

Approvals

Declarations	CUL;TUV;CQC;CE
Standards Met	UL1283, CSA C22.2 No.8; IEC/EN 60939,; CQC GB 15288/GB 15287-2008

Physical Dimensions:

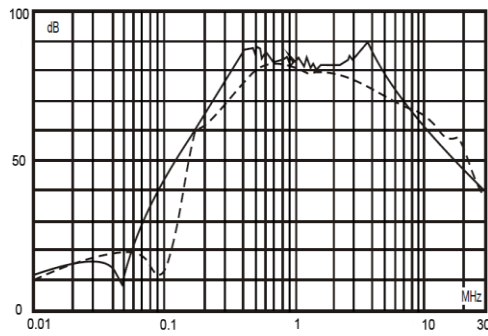
Electrical Schematic:



Insertion loss table(In 50ohm system according IEC/CISPR No.17)

———— Common mode - - - - - Differential mode

10A



packaging

