

FEATURES

- Flow regulator
- Uni-directional
- Panel or Inline mounted

RS PRO Flow Regulator

RS Stock No.: 2351235



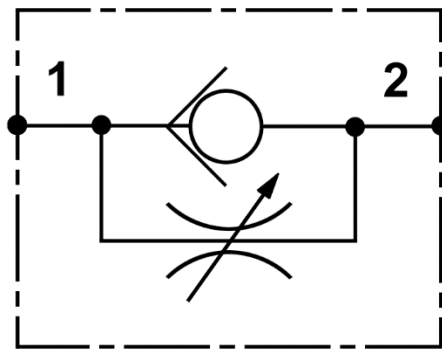
Uni-Directional

Product Description

Part No.	Port Size
2351235	1/8"

Features

- Flow regulator
- Uni-directional
- Panel or Inline Mounted



General Specifications

Working medium	Clean air
Working pressure	0.5 to 10 bar
Guaranteed pressure	15 bar
Working temperature	-20°C to +70°C

Similar Products

Part No.	Port Size
2351236	1/4"