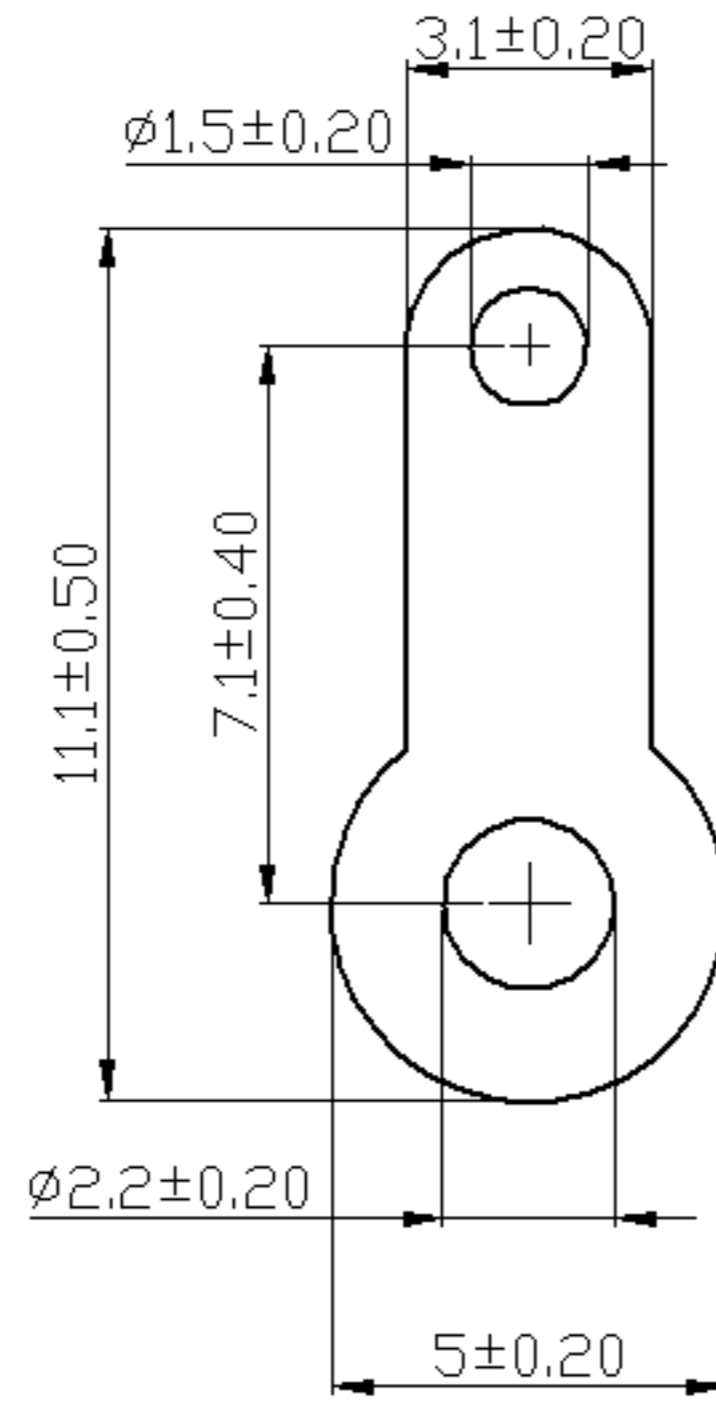


REV	DESCRIPTION	DATE
-----	-------------	------



RS NO. 1867876

\*. THICKNESS : 0.35 mm

\*. SURFACE TREATMENT : TIN PLATED

Tolerance Unless Otherwise Specified	
0 > 6 mm $\pm 0.20$	ANGLE
6 > 18 mm $\pm 0.30$	0° REF $\pm$
18 > 30 mm $\pm 0.40$	° $\pm$
30 > 75 mm $\pm 0.50$	° $\pm$