

8

7

6

5

4

3

2

1

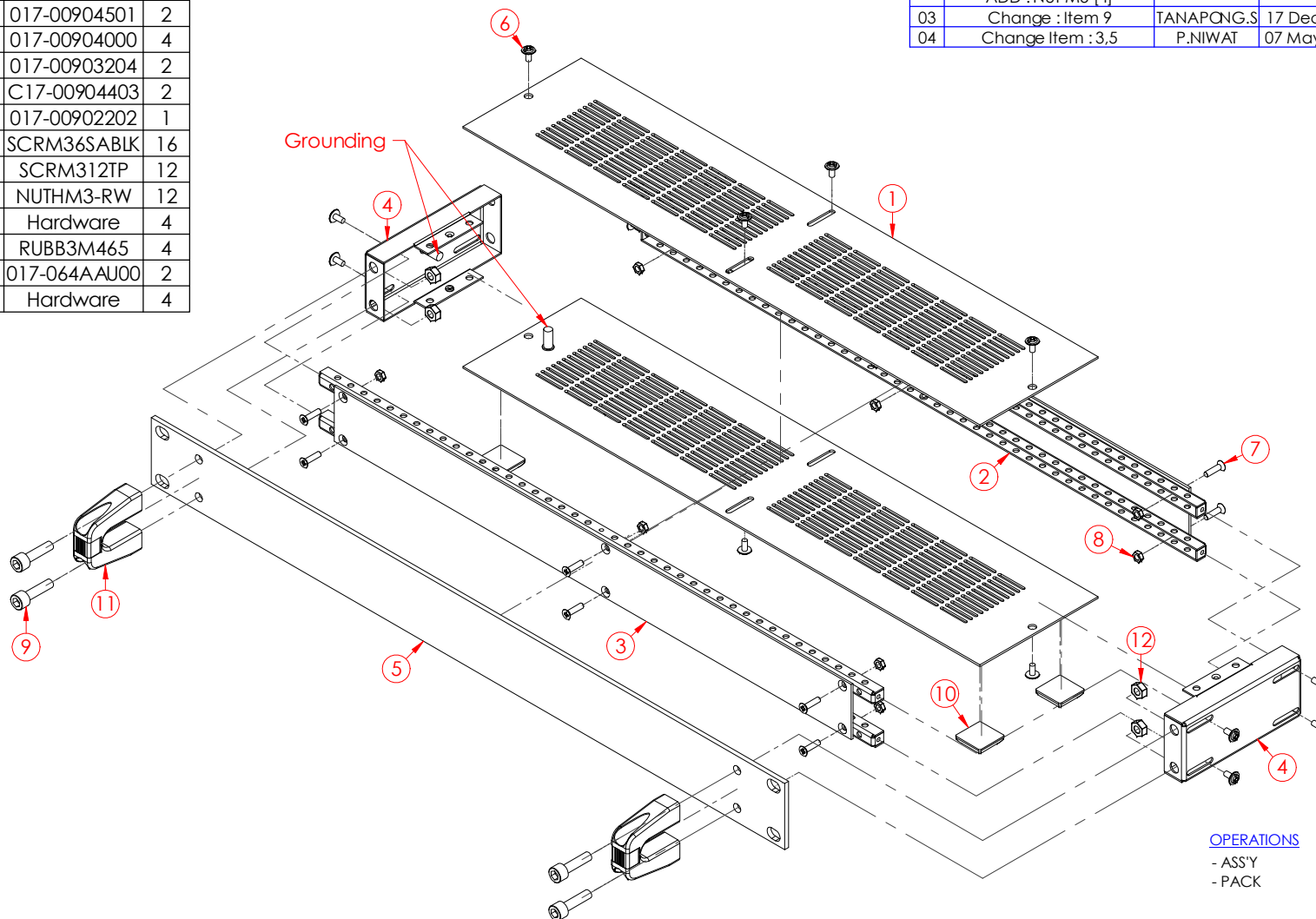
## CHEVAL CONFIDENTIAL - STRICTLY PRIVATE

THE INFORMATION CONTAINED IN THIS DRAWING IS THE SOLE PROPERTY OF CHEVAL ELECTRONIC ENCLOSURE. ANY REPRODUCTION IN PART OR WHOLE WITHOUT THE WRITTEN PERMISSION OF CHEVAL ELECTRONIC ENCLOSURE IS PROHIBITED.

## REVISIONS

Rev.	Description	Editor	Date
00	-		26 Nov 2008
01	Add : Handle1U		02 Jun 2009
02	CHANGE : ITEM 4,9,11 SCREW M5X15 TO SCREW M5X16 [4] [HANDLE New, Side Panel New] ADD : NUT M5 [4]		19 May 2010
03	Change : Item 9	TANAPONG.S	17 Dec 2018
04	Change Item : 3,5	P.NIWAT	07 May 2019

Item	Description	Dwg No.	Qty.
1	TOP-BASE COVER 90D	017-00904501	2
2	GENERAL PURPOSE BAR 1. (1J-2J,1U-2U)	017-00904000	4
3	INSIDE FRONT/BACK PANEL 1U	017-00903204	2
4	SIDE PANEL 1U 90D	C17-00904403	2
5	FRONT PANEL 1U	017-00902202	1
6	SCREW M3 X 0.5-6 (With washer)	SCRM36SABLK	16
7	TAPER SCREW M3 X 12	SCRM312TP	12
8	HEX NUT M3 X 0.50 BLACK	NUTHM3-RW	12
9	Hex Socket Screw M5-20 BLK.	Hardware	4
10	RUBBER FOOT (T = 8.80 mm.)	RUBB3M465	4
11	Handle 1U	017-064AAU00	2
12	NUT M5 BLK.	Hardware	4



## OPERATIONS

- ASSY
- PACK



**Note:** All Items in Assembly to be RoHS Compliant. If Any Part of Specification Conflicts With Latest RoHS Requirements, Contact Cheval QA.

**Spec:** Per Spec IP-CHE-XXXX

Third Angle Projection	Drawn	P.PHUSIT	Date	26 Nov 2008	Material
	Check 1	Date			SEE INDIVIDUAL COMPONENTS.
	Check 2	Date			K. - Scale Units QTY.
					V. - - MM. 1
					Do not Scale Drawing
	Program :	Solid Edge V.19			

Job Name	PF 19" 1UD0 ENCLOSURES SERIES	Dwg Title	PF19 1U 90D
CD No	CHV 09	Sub Dir	017-009
File Name	009-AAB4	Dwg No	017-009AAB04
Sheet	1/2		

8

7

6

5

4

3

2

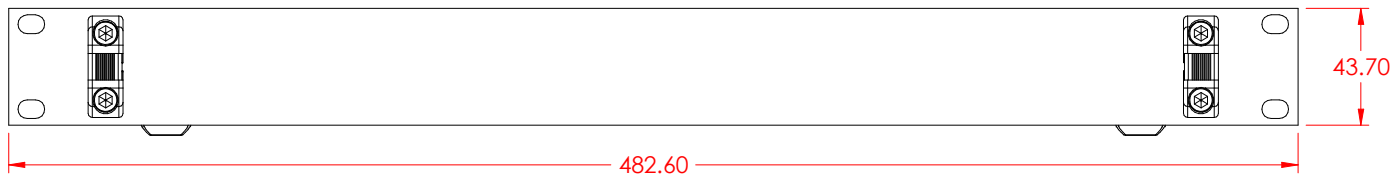
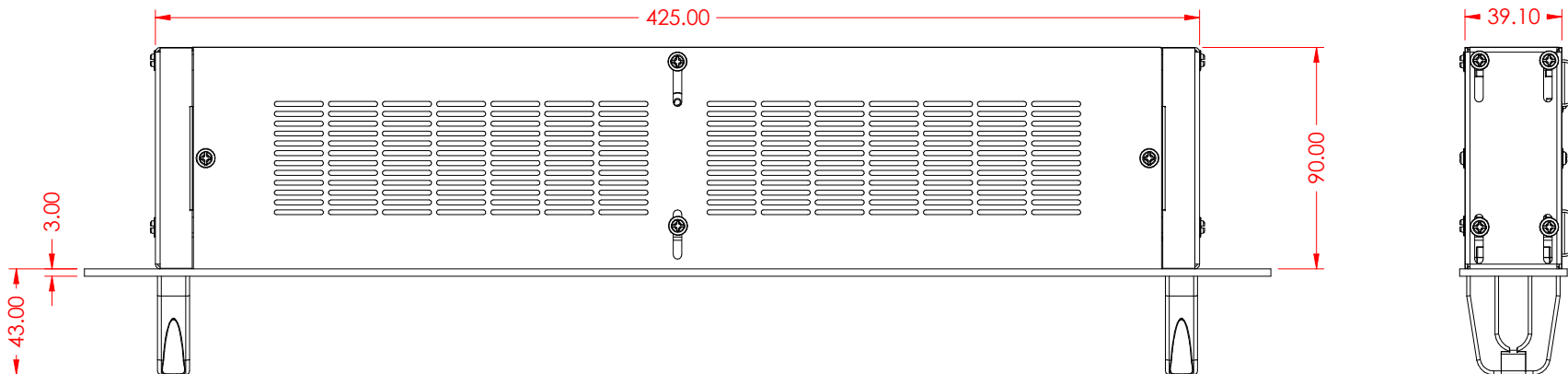
1

**CHEVAL CONFIDENTIAL - STRICTLY PRIVATE**

THE INFORMATION CONTAINED IN THIS DRAWING IS THE SOLE PROPERTY OF CHEVAL ELECTRONIC ENCLOSURE. ANY REPRODUCTION IN PART OR WHOLE WITHOUT THE WRITTEN PERMISSION OF CHEVAL ELECTRONIC ENCLOSURE IS PROHIBITED.

**REVISIONS**

Rev.	Description	Editor	Date
00	-		26 Nov 2008
01	Add : Handle1U		02 Jun 2009
02	CHANGE : ITEM 4,9,11 SCREW M5X15 TO SCREW M5X16 [4] [HANDLE New, Side Panel New] ADD : NUT M5 [4]		19 May 2010
03	Change : Item 9	TANAPONG.S	17 Dec 2018
04	Change Item : 3,5	P.NIWAT	07 May 2019

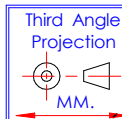


**OPERATIONS**

- ASSY
- PACK

**Note:** All Items in Assembly to be RoHS Compliant. If Any Part of Specification Conflicts With Latest RoHS Requirements, Contact Cheval QA.

**Spec:** Per Spec IP-CHE-XXXX



Drawn	P.PHUSIT	Date	26 Nov 2008
Check 1		Date	
Check 2		Date	
Program : Solid Edge V.19			

Material			
SEE INDIVIDUAL COMPONENTS.			
K.	-	Scale	Units QTY.
V.	-	-	MM. 1
Do not Scale Drawing			

<b>Customer</b> <b>Cheval</b>			CHEVAL ELECTRONIC ENCLOSURE CO.,LTD. 145 Moo 17 Bangplee Industrial Estate, Soi 4 Bangsaotong, Sub-District, Bangsaotong Samutprakam 10540 THAILAND. Tel 3151504-5		
Job Name	PF 19" 1UD0 ENCLOSURES SERIES		Dwg Title	PF19 1U 90D	
CD No	CHV 09	Sub Dir	017-009	File Name	009-AAB4
				Dwg No	017-009AAB04
				Sheet	2/2