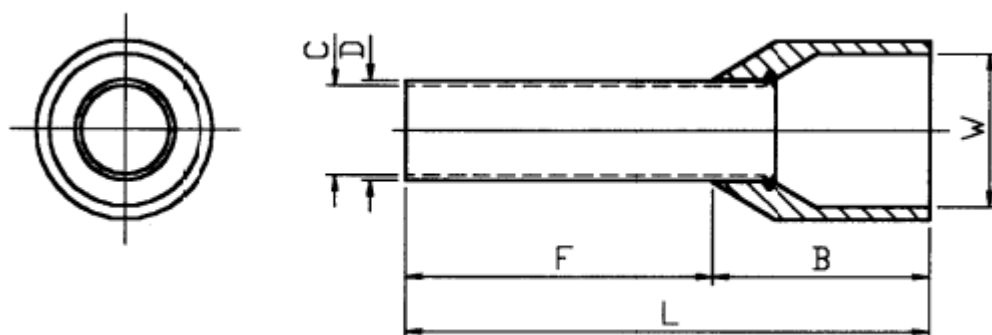


Datasheet

Insulated Crimp Bootlace Ferrule 12mm Pin Length

RS Stock number [513-2657](#)

Drawing (mm):



Stock Number	F ± 0.50	L ± 1.00	W ± 0.30	B ± 0.50	D ± 0.10	C ± 0.10	Colour
513-2657	12	20.8	7.5	8.8	4.9	4.5	RED

Specifications:

1. MAXIMUM ELECTRICAL RATING: 105°C 300 VOLTS MAX.
2. INSULATION MATERIAL: NYLON
3. TERMINAL MATERIAL: COPPER TUBE.
4. WIRE RANGE: 8A.W.G. (10mm²)