

Datasheet

## **Quick Acting Glass Tube Fuse, 8A, 5x20mm**

**Stock No: 1778064**

**RS Pro**



### **Specifications:**

#### **Materials**

Tube (Body): Transparent glass tube. No breaking or deformation is allowed.

Two brass end caps: Made of brass of good conductivity.

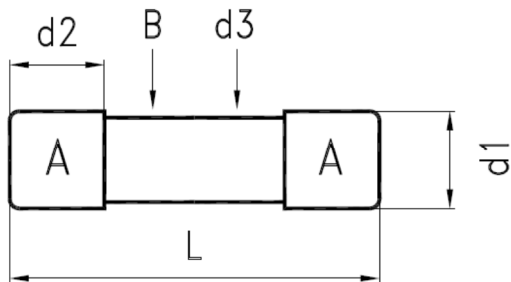
Coating of brass caps: Plating the surface with nickel. If the indication is added with "S", it needs to be plated with silver.

#### **Interrupting Ratings**

35 amperes or  $10 \times$  rated current ; whichever is greater at 250V AC.

#### **Operating Temperature**

-55°C to +125°C

**Drawing (mm):**


NO.	Part Name		Volume
A	Brass Cap	Nickel Plating	2
B	Glass Tube	Transparent Glass	1
d1	Dia. of Cap	$5.2^{+0.1}_{-0.2}$ mm	
d2	Height of Cap	$5.25 \pm 0.1$ mm	
d3	Dia. of Ceramic	$4.56 \pm 0.2$ mm	
L	Body of Fuse	$20.00 \pm 0.75$ mm	

**Electrical Characteristic:**

	150% Rating		210% Rating		275% Rating		400% Rating		1000% Rating	
Rating	Min.	Max.	Min.	Max.	Min.	Max.	Min.	Max.	Min.	Max.
8A~10A	30 min			30 min	50 ms	2 sec	10 ms	400 ms		40 ms

Ampere Rating	Nominal Resistance Cold Ohms Range	Nominal Melting $I^2t$ A <sup>2</sup> Sec
8 A	0.0054-0.0100	157.59