

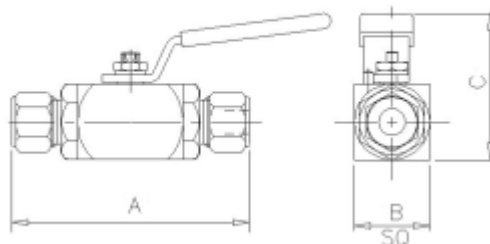


ENGLISH

Datasheet

Stock No: 324-5010

# RS Pro Stainless Steel Line Mounting Hydraulic Ball Valve BSP 1/4



## Product Details

### Stainless Steel Ball Valve

316 stainless steel 2 way ball valves with 3 ball valve options. Valves can be locked in either the open or closed position, panel mount which is cost effective and there is also a firesafe/antistatic option.

Reduced bore design

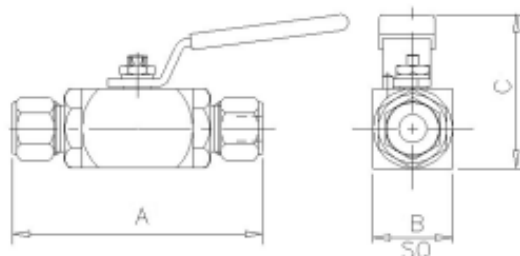
Available in BSP and NPT sizes

Suitable for use with water and oil

PTFE seals

Delrin® is a registered trademark of Du Pont for its acetal resin

**Ball Valves**



The 'B6' Type Single Isolating Ball Valve is designed for safe and reliable isolation giving bubble tight shut off. Totally enclosed soft seats offer both positive sealing and low operating torques, from vacuum to high-pressure service. Anti-blow out spindle is fitted as standard with the option of PTFE or Grafoil seals.

Part No.	Size	A	B	C	Weight (Kgs)
B6BIX6MM	6mm	4.0	1.3	2.5	0.4
B6BIX10MM	10mm	4.0	1.3	2.5	0.4
B6BIX12MM	12mm	4.1	1.3	2.5	0.5
B6BIX25	1/4"	3.9	1.3	2.5	0.4
B6BIX38	3/8"	3.9	1.3	2.5	0.4
B6BIX50	1/2"	4.1	1.3	2.5	0.5

### Key Features of the Oliver Ball Valve range

- Totally enclosed soft seats giving positive sealing and low torque operation across the pressure range
- One-piece spindle with anti-blowout shoulder that maintains seal integrity at all pressures
- Precision machined ball for smooth operation through 90 degrees to give straight through bore
- Either PTFE or Grafoil spindle and body seals to give high body integrity
- 316 stainless steel one-piece handle fitted with twin anti-vibration locknuts

### Standard Specification

Pressure: 6000psi	Seals: PTFE	Seats: PTFE/PVDF or PTFE/KEL-F	
Temp: 120 deg C (PTFE/PVDF) or 200 deg C (PTFE/KEL-F)	Connections: Twin Ferrule 'Bilok'	Handle: Lever	

### Ordering Code

(Typical example) → <b>B6BIX</b>		<b>50</b>	<b>S</b>	<b>/</b>	<b>NF</b>
<b>Type</b>					
B6 = Ball valve 6000 psi					
B I = Bilok connections					
X = 10mm bore					
<b>Size (10mm bore size only)</b>					
25 - 1/4"OD	6MM - 6mm OD				
38 - 3/8"OD	10MM - 10mm OD				
50 - 1/2"OD	12MM - 12mm OD				
<b>Material</b>					
S - 316S31 Stainless Steel					
M - Monel (400)					
HC - Hastalloy C276					
(Others available)					
<b>Options</b>					

FS - Firesafe to BS6755 Pt2/API 607 Rev4  
 HL - Handle Locking  
 KF - PTFE/Kel-F seats  
 NA - NACE MR-01-75 (latest revision)  
 NF - Nuts and ferrules included

OH - Oval Handle  
 PE - Pinned End Connectors (prevents accidental removal)  
 PMHB - 4 x M5 mounting holes in base for panel mounting  
 PMHT - 4 x M5 mounting holes in top for panel mounting