

Datasheet

Time-Lag Glass Tube Fuse, 1-15A, 6.3x32mm

Stock No: 1778026, 1778027, 1778028, 1778029,
1778042, 1778043, 1778044

RS Pro



Specifications:

Materials

Tube (Body): Transparent glass tube. No breaking or deformation is allowed.

Two brass end caps: Made of brass of good conductivity.

Coating of brass caps: Plating the surface with nickel.

If the indication is added with "S", it needs to be plated with silver.

Interrupting Ratings

200mA~10A: 10000 amperes at 125V AC

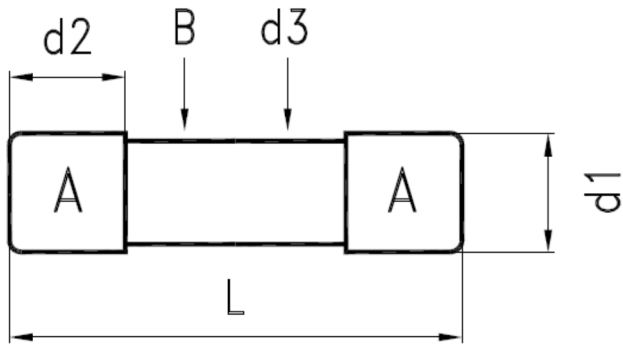
200mA~1A: 35 amperes at 250V AC

1.2A~3.5A: 100 amperes at 250V AC

3.75A~30A: 200 amperes at 250V AC

Operating Temperature

-55°C to +125°C

Drawing (mm):


NO.	Part Name		Volume
A	Brass Cap	Nickel Plating	2
B	Glass Tube	Transparent Glass	1
d1	Dia. of Cap	6.35±0.1mm	
d2	Height of Cap	6.45±0.1mm	
d3	Dia. of Glass	5.62±0.3mm	
L	Body of Fuse	31.75±0.75mm	

Electrical Characteristic:

Rating	100% Rating		135% Rating		200% Rating	
	Min.	Max.	Min.	Max.	Min.	Max.
200mA~3A	4 Hr			1 Hr	5 sec	120 sec
3.15A~30A	4 Hr			1 Hr	12 sec	120 sec

Mark		Nominal Resistance
		Cold Ohms
1	A	0.3504
1.5	A	0.1928
2	A	0.1088
3.5	A	0.0525
7	A	0.0167
10	A	0.0113
15	A	0.0064

Reference:

Stock No	Rating amperes
1778026	1A 250V
1778042	1.5A 250V
1778027	2A 250V
1778043	3.5A 250V
1778028	7A 250V
1778029	10A 250V
1778044	15A 250V