

# PIEZO TRANSDUCER (Self Drive Type)

External Circuitry Type

## Shape

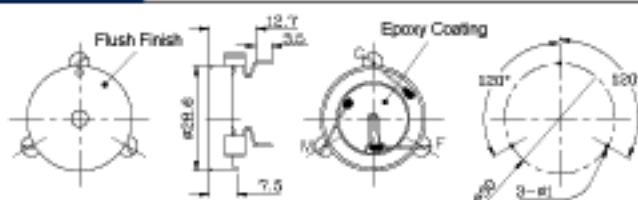
### KPE-132



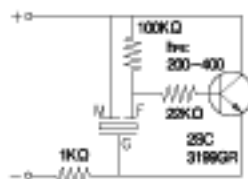
RoHS Compliant Available (eg.KPEG132)

Model Number	KPE-132
Rated Frequency (Hz)	3,000 ± 500
Operating Voltage Range (VDC)	3 ~ 28
Current Consumption (mA)	Max. 8@12VDC
Sound Pressure Level (dB)	Min. 83dB@30cm@12VDC
Tone	Continuous
Operating Temperature (°C)	-30 ~ +85
Storage Temperature (°C)	-40 ~ +95
Weight (Gram)	3.8
Material	ABS UL-94 1/16" HB High Heat (Black)

## Dimension



The current consumption and the sound pressure level are measured by using the recommended driving circuit shown in the right.



Tol : ±0.5 Unit : mm

## Characteristic

