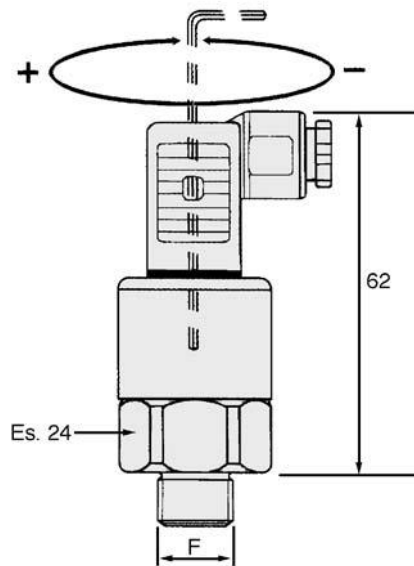




Product Datasheet

ENGLISH

RS-F4 Series Pressure Switches



F4 adjustable pressure switches provide an electrical signal once a set pressure value is reached. Pre-set pressure is adjusted by rotating a screw, located in the centre of the switch, clockwise to increase pressure & anti-clockwise to decrease pressure.

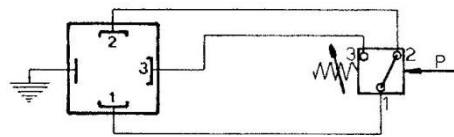
Note: for the switch with the DIN connector the screw is recessed, - a 2mm allen key is required. Mechanical stops protect the spring & micro-switch from over pressurisation.

Technical data

- Steel Body
- 1/4" BSP Male Connection
- Any Orientation Mounting
- Temp. Range -25 to +85°C
- Frequency 90 Cycles/Min
- Accuracy $\pm 4\%$ of Set Pressure
- Weight 50g

Electrical Features

- DIN 43650 Electrical Connection
- Weatherproof IP65
- Max Contact Load 0.5A @ 25v AC



Rs Stock No	Adjustable Pressure Range BAR	Max Pressure Range BAR	Fixed Hysteresis Value
8802289 F4SX	1-12	25	10%
8802283 F4TX	5-50	300	15%
8802292 F4VX1	10-100	300	15%
8802295 F4ZX1	20-200	300	15%
8802299 F4RX1	0.2-2.5	25	10%