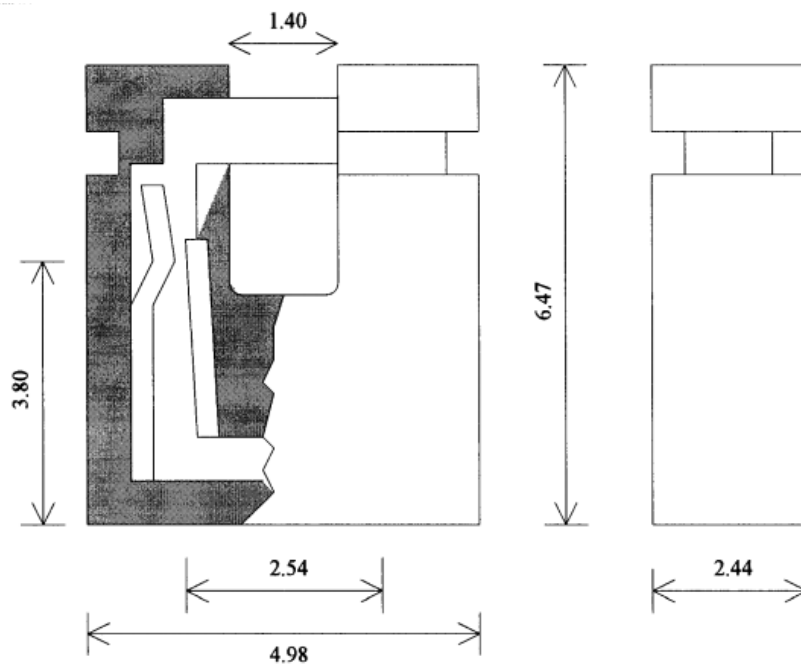


Datasheet

Female Straight Blue Closed Top 2 Way 1 Row 2.54mm Pitch

RS Stock number [251-8519](#)

Dimensions: mm



Specifications

- Insertion Force: 340 Grams Max
- Extraction Force: 50 Grams Min
- Current Rating: 1 AMP Min
- Contact Resistance: 20m. Ohms Max
- Insulator Resistance: 1000 Megohms min
- Withstanding Voltage: 1000 Vrms Min
- Operating Temperature: -55°C to 105°C
- Insulator Colour: Blue
- Insulator Material: PBT UL 94V-0
- Contact Plating: 3 to 5 microns tin over copper