

FEATURES

- Robust, thick-walled design
- Closed barrel ensures crimp terminal fits securely around the cable
- Copper body material provides high
- Conductivity and is easy to crimp
- Tin plating on crimp terminal provides resistance to corrosion
- Funnel-shaped internal barrel for easy wire insertion

RS PRO Uninsulated Tubular Ring Terminal, M5 Stud Size to 10mm² Wire Size

RS Stock No.: 531-015



RS Professionally Approved Products bring to you professional quality parts across all product categories. Our product range has been tested by engineers and provides a comparable quality to the leading brands without paying a premium price.

Product Description

From RS PRO a high-quality heavy-duty tubular crimp ring terminal, also known as a ring connector or cable lug. Heavy duty ring crimp terminals are used for connecting multi-stranded cables to a stud or a post on an electrical component such as a battery terminal. This tubular ring terminal is made from thick-walled, heavy-duty, highly conductive copper and is tin plated. Once correctly crimped onto a cable this ring terminal will provide a secure and reliable electrical connection.

General Specifications

Insulation	Uninsulated
Contact Material	Copper
Contact Plating	Tin
Stud Size	M5
Application	Crimp ring wire connectors are used in a wide range of industries for connecting multi-stranded power cables to electrical components in more heavy duty applications. Applications include cabling and wiring in industrial control systems and industrial machines, automotive applications, communication equipment, power supplies and domestic appliances.

Mechanical Specifications

Overall Length	30mm
Inner Ring Diameter	5.3mm
Maximum Wire Size	10mm ²

Operation Environment Specifications

Maximum Operating Temperature	150°C
--------------------------------------	-------

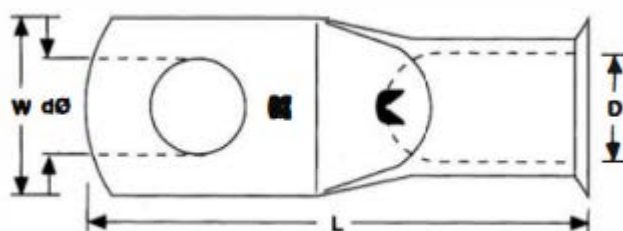
Approvals

Compliance/Certifications	
----------------------------------	--

BS 2871, BS 4579 Part 1, BS 1872 Part 2 2011/65/EU and 2015/863

Similar Products

Parameters	Stock#	Stock#	Stock#	Stock#
Brand	RS PRO	RS PRO	RS PRO	RS PRO
Insulation				
Insulation Material				
Shrouded				
Colour				
Contact Material				
Contact Plating				
Stud Size				
Purity				
Double Crimp				
Connector Type				
Maximum Electrical Rating				
Maximum Electrical Current				
Thickness				
Overall Length				
Inner Ring Diameter				
Outer Ring Diameter				
Maximum Wire Size				
Minimum Wire Size				
Maximum Wire Size (AWG)				
Minimum Wire Size (AWG)				
Sleeve Form				
Weight				
Maximum Operating Temperature				
Minimum Operating Temperature				



Dimensions (mm)						
RS Pro Stock Number	Conductor Size (mm ²)	Stud Size	Length (L)	Width (W)	Inside Diameter (D)	Hole Diameter (dØ)
119-160	6	6	24.6	10	4	6.3
119-176	6	8	27.3	12.5	4	8.3
531-015	10	5	30	10.4	4.5	5.1
531-021	10	6	30	10.5	4.5	6.3
531-037	10	8	30	12.5	4.5	8.2
531-043	16	6	30.7	11	5.5	6.3
531-059	16	8	30.7	12.5	5.5	8.4
531-065	25	6	32.2	13.1	6.7	6.3
531-071	25	8	32.2	13.1	6.7	8.3
531-087	25	10	36.9	15.1	6.7	10.2
241-4631	35	8	37.6	15.8	8.6	8.3
531-885	35	10	41.5	16.2	8.6	10.3
531-891	50	10	43.2	17.6	9.6	10.3
531-908	50	12	43.2	18.7	9.6	12.8
531-914	70	10	50.4	21.8	12	10.2
531-920	70	12	50.4	21.8	12	12.7
241-4647	95	10	53.2	24.3	13.5	10.3
241-4669	95	12	53.2	24.3	13.5	12.7
241-4653	120	10	59.1	27.5	15	10.3
241-4675	120	12	59.1	27.5	15	12.7
241-4681	150	10	66.3	30.3	16.5	10.2
241-4704	150	12	66.3	30.3	16.5	12.7