

FEATURES

- Great value ESD Bench Matting
- Made from anti-static (conductive) and static-dissipative materials with synthetic rubber
- Static Dissipative Layer
- Conductive Layer
- Static Dissipative Layer
- All bench mats come with 10 mm studs in each corner
- Surface resistivity $>10^3 >10^5 \Omega^2$
- Resistance to ground RG - $10^7\Omega$ to $>10^9\Omega$
- For grounding cords see stock no. 466-1687 typically

Grey Bench/Floor ESD-Safe Mat, 1.8m x 1.2m x 3.2mm

RS Stock No.: 466-1671



RS Professionally Approved Products bring to you professional quality parts across all product categories. Our product range has been tested by engineers and provides a comparable quality to the leading brands without paying a premium price.

Product Description ATTRIBUTE 1

Introducing RS PRO ESD protective matting. These mats are designed to help prevent damage to ESD sensitive items and assemblies from Electrostatic Discharge. During application, the mats drain static charge, ground the item and protect surfaces from wear.

Available Options

- RS stock no: 466-1643 - 600 x 1200 mm – Blue
- RS stock no: 466-1665 - 1200 x 1800 mm - Blue
- RS stock no: 466-1659 - 600 x 1200 mm – Grey
- RS stock no: 466-1671 - 1200 x 1800 mm – Grey

General Specifications

Use Type	Bench, Floor
Suitable For	Chemical Resistance, Continuous Monitoring, Soldering
Colour	Grey
Complies with EN 61340-5-1	Yes
Surface Texture Type	Smooth
Material	Made from anti-static (conductive) and static- dissipative materials with synthetic rubber
Number of Material Layers	3

Electrical Specifications

Resistance	Resistance to ground RG - $10^7\Omega$ to $>10^9\Omega$
Surface Resistance	$1 \times 10^6 \leq R \leq 1 \times 10^9 (\Omega)$
Bottom Resistance	$1 \times 10^3 \leq R \leq 1 \times 10^6 (\Omega)$
Volume Resistance	$1 \times 10^5 \leq R \leq 1 \times 10^8 (\Omega)$
Temperature Resistance	180 (Instantaneous Temp) °C

Mechanical Specifications

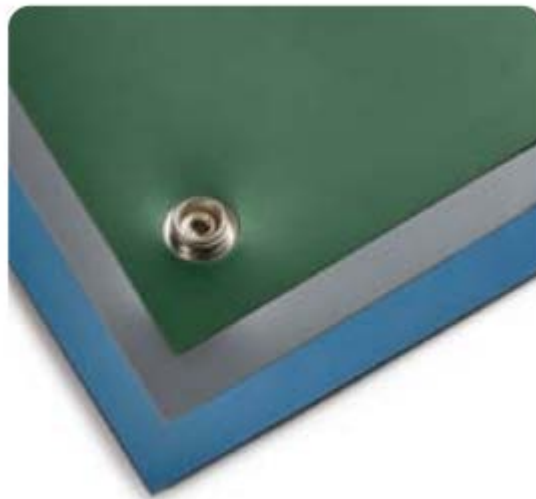
Size	600mm x 1200mm
Length	1.8m
Width	1.2m
Thickness	3.2mm

Operation Environment Specifications

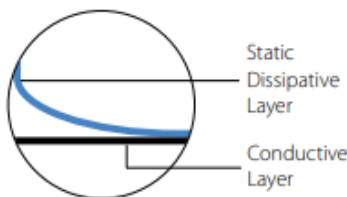
Temperature	20°C -26 °C
Relative Humidity	40%-65%

Approvals

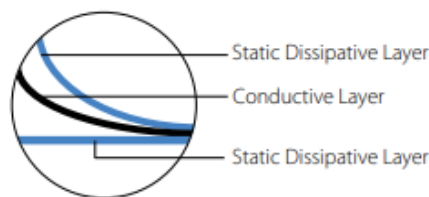
Compliance/Certifications	Supports ESD S20.20 and EN 61340-5-1 ESD control programme compliance
---------------------------	---



2 LAYER CONSTRUCTION:



3 LAYER CONSTRUCTION:



CONFORMS TO ESD S20.20 AND EN 61340-5-1 ESD.

ARTICLE:	DESCRIPTION:	SIZE:	ADDITIONAL NOTES:
466-1643	ESD Bench Matting – 3 Layer, Smooth Finish	600 x 1200mm	Blue
466-1665	ESD Bench Matting – 3 Layer, Smooth Finish	1200 x 1800mm	Blue
466-1659	ESD Bench Matting – 3 Layer, Smooth Finish	600 x 1200mm	Grey
466-1671	ESD Bench Matting – 3 Layer, Smooth Finish	1200 x 1800mm	Grey
287-7587	ESD Bench Matting – 2 Layer, Smooth Finish	600 x 1200mm	Beige
327-3122	ESD Bench Matting – 2 Layer, Smooth Finish	600 x 1200mm	Green
287-7593	ESD Bench Matting – 2 Layer, Smooth Finish	600 x 1200mm	Grey