

FEATURES

- Rated currents up to 10A
- 2-pole rocker switch
- Single or dual-fuse holder
- Optional medical versions((R5) type)
- Compact design with optimal shielding

RS PRO EMI FILTER

RS Stock No.: 237-8666



RS Professionally Approved Products bring to you professional quality parts across all product categories. Our product range has been tested by engineers and provides a comparable quality to the leading brands without paying a premium price.

Product Description

- **Portable electrical and electronic equipment**
- **Single-phase power supply , switch-mode power supply**
- **Medical equipment**
- **Small and medium-sized machines and household equipment etc**

General Specifications

Available with fuse holder for two (5*20mm) fuses
 (R5) types comply with the requirements of IEC/EN60601-1 for safety clearance, leakagecurrent and hipot testing. There are a variety of parts and combinations to meet different customer's EMC tests. Customized products according to customer's requirements

Mechanical Specifications

size	61X29.5X62mm (L X W X H)
weight	0.104kgs

Electrical Specifications

Rated Voltage Max.	115/250VAC
Operating frequency	50/60Hz
Rated currents	6A
Hipot Rating	L-N 500VDC, L/N-G 2250VDC

Protection Category

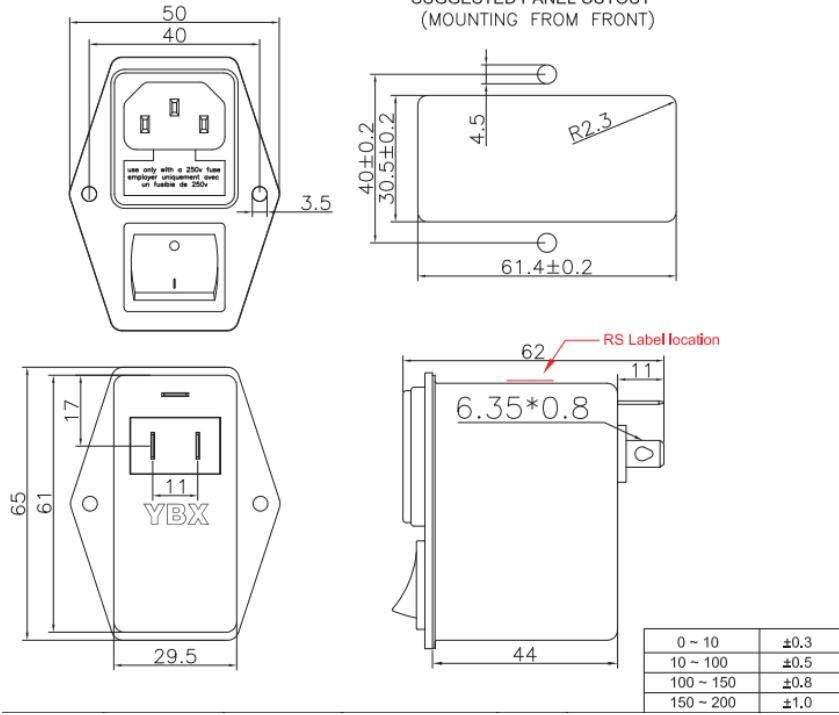
according to IEC 60529 IP40

Approvals

Declarations	UL;TUV;CE;CQC;
Standards Met	UL1283, CSA C22.2 No.8; IEC/EN 60939,; CQC GB 15288/GB 15287-2008

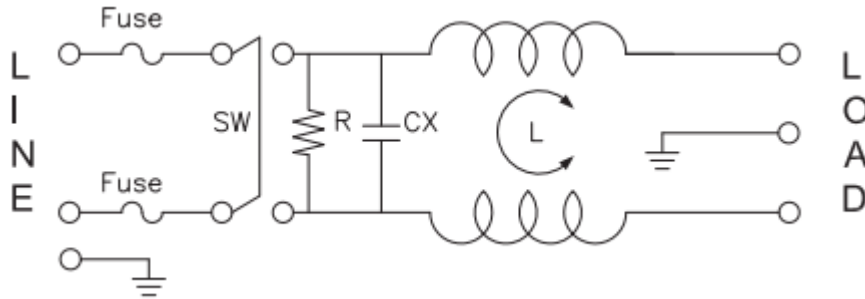
Physical Dimensions:

2. PHYSICAL DIMENSIONS:



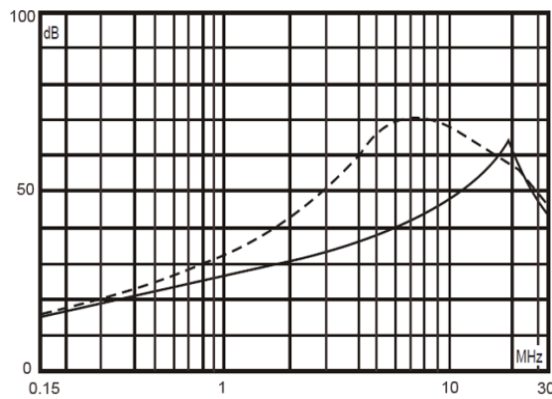
Power Line Filters

Electrical Schematic:



Insertion loss table(In 50ohm system according IEC/CISPR No.17)

———— Common mode - - - - - Differential mode
6A



packaging

