

## FEATURES

- Operating temperature range is from - 60 °C to + 300 °C
- RoHS and REACH compliant
- Silicon free

# RS PRO STRAIGHT MALE ADAPTOR (TAPER)

RS Stock No.: 2312603



RS PROfessionally Approved Products bring to you professional quality parts across all product categories. Our product range has been tested by engineers and provides a comparable quality to the leading brands without paying a premium price.

## Product Description

The RS PRO straight male adaptor (taper) is made up of brass. The working pressures and working temperatures depend on which type of tube is used, for this reason, the values must be determined in accordance with the tube's features. Hereunder, we specify the values of the maximum pressure advised for the fittings at a temperature of 20° C connected with copper tube, which has a thickness of 1 mm. Here the tube size is 16 and corresponding maximum pressure advised is 94 bar.

## General Specifications

<b>Fitting Type</b>	Adapter
<b>Material</b>	Brass
<b>Fitting Direction</b>	Straight
<b>Application</b>	Compressed Air, Pneumatic Automation, Industrial water circuits, Inert Gases, Fluids, Steam Vacuum

## Mechanical Specifications

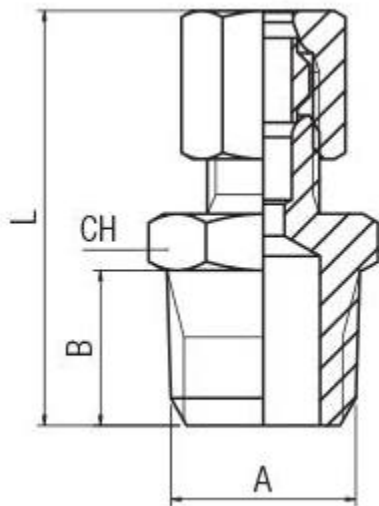
<b>Pipe Fitting Connection Type</b>	Threaded
<b>Connection 1</b>	M14 Metric Female
<b>Connection Gender 1</b>	Female
<b>Thread Size 1</b>	M14
<b>Thread Standard 1</b>	Metric
<b>Connection 2</b>	1/2 in BSP Male
<b>Connection Gender 2</b>	Male
<b>Thread Size 2</b>	1/2 in
<b>Thread Standard 2</b>	BSP
<b>Length</b>	42.5mm
<b>Wrench Size</b>	22mm

## Operation Environment Specifications

Temperature	Min.	Max.
	- 60°C	+300°C

## Similar Products

Parameters	2312779	2312778
<b>Brand</b>	<b>RS PRO</b>	<b>RS PRO</b>
<b>Pipe Fitting Connection Type</b>	Threaded	Threaded
<b>Connection 1</b>	1/4 in BSPT Male	1/2 in BSPT Male
<b>Connection Gender 1</b>	Male	Male
<b>Thread Size 1</b>	1/4 in	1/2 in
<b>Thread Standard 1</b>	BSPT	BSPT
<b>Connection 2</b>	1/4 in NPTF	1/2 in NPT Male
<b>Connection Gender 2</b>	Male	Male
<b>Thread Size 2</b>	1/4 in	1/2 in
<b>Thread Standard 2</b>	NPTF	NPTF
<b>Length</b>	29mm	36.5mm
<b>Wrench Size</b>	14mm	22mm



Tube	A	L	CH	Pack.
16	1/2	42.5	22	10