



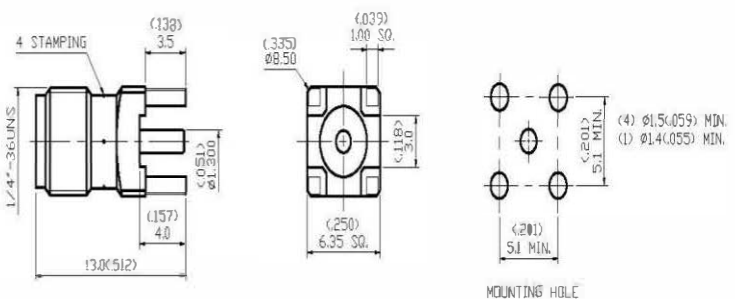
Datasheet

RS PRO

Non-Magnetic SMA Straight PCB Mount Jack Receptacle

Stock number: 738-5897

EN



1.0 ELECTRICAL

- 1.1 FREQUENCY RANGE: DC-18 GHz
- 1.2 NOMINAL IMPEDANCE: 50 OHM
- 1.3 VOLTAGE RATING: 500 VOLTS MAX.
- 1.4 VSWR: 1.25 MAX.

2.0 MATERIALS

- 2.1 PINNES: BERYLLIUM COPPER PER ASTM B196 UNS C17360
- 2.2 CENTER CONTACT: BERYLLIUM COPPER PER ASTM B196 UNS C17360
- 2.3 INSULATION: TEFLON PER ASTM D1457 AND ASTM D1710

3.0 FINISHES AND OTHERS

- 3.1 SEE BELOW TABLE FOR DETAILS.

4.0 MECHANICAL

- 4.1 INTERFACE IN ACCORDANCE WITH MIL-STD-3496

5.0 ENVIRONMENTAL

- 5.1 OPERATING TEMPERATURE RANGE: -65° C TO +165° C

NO	DESCRIPTION	MATERIAL	QTY	FINISH
3	CENTER CONTACT	BERYLLIUM COPPER	1	GOLD 50µ MIN.
2	INSULATION	TEFLON	1	NONE.
1	BODY	BERYLLIUM COPPER	1	GOLD 3µ MIN.

APPROVED by _____ DATE: _____

DESCRIPTION		NON-MAGNETIC SMA STRAIGHT PCB MOUNT JACK RECEPTACLE						
DRAWN	TOLERANCE	品名	TITLE	DATE	版次	REV.	DATE	
Amy	X ±0.2	NR0HS MPLIANT (500)	NR0HS MPLIANT (500)	05.20.10	A-3			
CHECK	XX ±0.1	UNIT						
Jenny	XX ±0.1	位	mm(in)					
APPROVAL	XXX ±0.05	SCALE						
Jenny	ANGLE ±5'	比例	4:1					