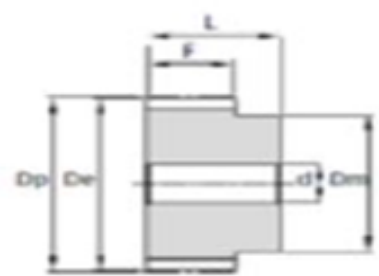
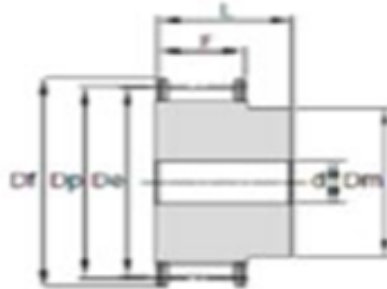
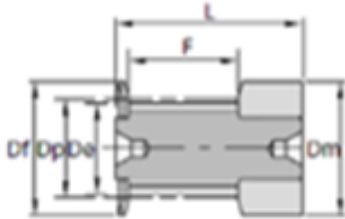


RS PRO 3M HTD Pilot Bore Pulleys Designed For 9 mm Wide Belts

Stock No: 146-5379

Pilot Bore



TYPE 0F

TYPE 1F

TYPE 8

• Material - Aluminium

• Flanges - Zinc Plated Steel

• Pitch - 3 mm

| RS Article | No. teeth | Type | Dp | De | Df | Dm | F | L | Bore (d) | Max. bore | No. flanges |
|------------|-----------|------|-------|-------|------|------|------|------|----------|-----------|-------------|
| 1465379 | 10 | 0F | 9.55 | 8.79 | 13 | 13 | 10.2 | 17.5 | - | 2 | 2 |
| 1465380 | 12 | 0F | 11.46 | 10.70 | 15 | 15 | 10.2 | 17.5 | - | 3 | 2 |
| 1465381 | 14 | 0F | 13.37 | 12.61 | 16 | 16 | 10.2 | 17.5 | - | 4 | 2 |
| 1465382 | 15 | 0F | 14.32 | 13.56 | 17.5 | 17.5 | 10.2 | 17.5 | - | 5 | 2 |
| 1465383 | 16 | 1F | 15.28 | 14.52 | 17.5 | 10 | 12.8 | 20.6 | 4 | 5 | 2 |
| 1465384 | 18 | 1F | 17.19 | 16.43 | 20 | 11 | 12.8 | 20.6 | 6 | 7 | 2 |
| 1465385 | 20 | 1F | 19.10 | 18.34 | 23 | 13 | 12.8 | 20.6 | 6 | 9 | 2 |
| 1465386 | 21 | 1F | 20.05 | 19.29 | 25 | 14 | 12.8 | 20.6 | 6 | 10 | 2 |
| 1465387 | 22 | 1F | 21.01 | 20.25 | 25 | 14 | 12.8 | 20.6 | 6 | 10 | 2 |
| 1465388 | 24 | 1F | 22.92 | 22.16 | 25 | 14 | 12.8 | 20.6 | 6 | 10 | 2 |
| 1465389 | 26 | 1F | 24.83 | 24.07 | 28 | 16 | 12.8 | 20.6 | 6 | 12 | 2 |
| 1465390 | 28 | 1F | 26.74 | 25.98 | 32 | 18 | 12.8 | 20.6 | 6 | 14 | 2 |
| 1465391 | 30 | 1F | 28.65 | 27.89 | 32 | 20 | 12.8 | 20.6 | 6 | 16 | 2 |
| 1465392 | 32 | 1F | 30.56 | 29.80 | 36 | 22 | 12.8 | 20.6 | 6 | 18 | 2 |
| 1465393 | 36 | 1F | 34.38 | 33.62 | 39 | 26 | 13.4 | 22.2 | 6 | 22 | 2 |
| 1465394 | 40 | 1F | 38.20 | 37.44 | 42 | 28 | 13.4 | 22.2 | 6 | 24 | 2 |
| 1465395 | 44 | 1F | 42.02 | 41.26 | 48 | 33 | 13.4 | 22.2 | 6 | 28 | 2 |
| 1465396 | 48 | 8 | 45.84 | 45.08 | - | 33 | 13.4 | 22.2 | 8 | 28 | - |
| 1465397 | 72 | 8 | 68.75 | 67.99 | - | 33 | 13.4 | 22.2 | 8 | 28 | - |