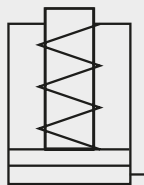


DAC SERIES

Single-Acting, Aluminium Cylinders

- Lightweight design for maximum portability and easy position.
- Aluminium alloy materials for enhanced strength and minimal weight.
- Steel base plate and saddle installed for better protection against load-induced damage.
- Hard chrome plated piston rod and inner cylinder barrel resists wear and corrosion.
- Maximum sized springs speed piston return and increase spring life.
- Stop ring for piston blow-out protection.
- 3/8" NPTF female coupler and dust cap included for all models.

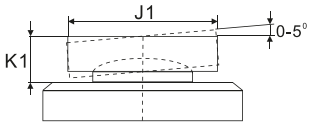
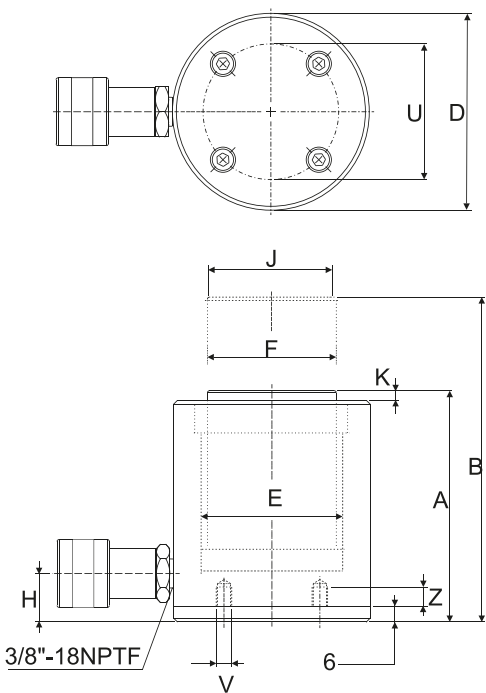


Single-Acting
Aluminium Cylinder
Spring return

Capacity	20-150 ton
Stroke	50-200 mm
Maximum Operating Pressure	700 bar



DAC-204



Optional Bolt Tilt Saddle Dimensions (mm)

Cylinder Model/Cap. (ton)	Model Number	Saddle Diameter J1	Saddle Protrusion from Base K1
DAC-50	DXKCATRAC -50	50.0	25.9
DAC-100	DX KCATRAC -100	91.2	33.0
DAC-150	DX KCATRAC -150	118.1	37.0



Saddle
All DAC-Series are equipped with removable saddles of hardened steel.

Steel Base Plate Mounting Holes

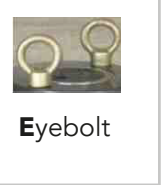
Cylinder Model/ Capacity (ton)	Bolt Circle U (mm)	Thread V (mm)	Thread Depth Z (mm)
DAC-20	70.0	M6	12
DAC-30	80.0	M6	12
DAC-50	110.0	M6	12
DAC-100	160.0	M6	12
DAC-150	200.0	M6	12

*Including Base Plate Height of 6mm.
*4 base plate bolts: M6X1.0X0.24

Handle Type
(S) - Standard equipped
(C) - Customer order



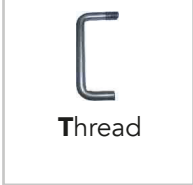
Weldable



Eyebolt



Removable strap handles



Thread

Handle type	Model Number	Cylinder Capacity	Stroke	Cylinder Effective Area	Oil Capacity	Collapsed Height	Extended Height	Outside Diam.	Cylinder Bore Diam.	Plunger Diam.	Base to Adv. Port	Saddle Diam.	Saddle Protrusion from Plngr.	Weight
(S)		ton (kN)	(mm)	(cm²)	(cm³)	A (mm)	B (mm)	D (mm)	E (mm)	F (mm)	H (mm)	J (mm)	K (mm)	(kg)
T	DAC-202	20 (218)	50	31.2	156	174	224	85	63	50	27	40	3	3.6
T	DAC-204		100	31.2	312	224	324	85	63	50	27	40	3	4.1
T	DAC-206		150	31.2	468	274	424	85	63	50	27	40	3	4.6
T	DAC-302	30 (309)	50	44.2	221	181	231	100	75	60	33	40	3	4.5
T	DAC-304		100	44.2	442	231	331	100	75	60	33	40	3	5.2
T	DAC-306		150	44.2	663	281	431	100	75	60	33	40	3	5.9
T	DAC-502	50 (496)	50	70.9	354	186	236	130	95	80	30	50	3	8.5
T	DAC-504		100	70.9	709	236	336	130	95	80	30	50	3	9.8
T	DAC-506		150	70.9	1063	286	436	130	95	80	30	50	3	11.1
T	DAC-1004	100 (1002)	100	143.1	1431	271	371	188	135	110	46	94	3	19.6
T	DAC-1006		150	143.1	2147	321	471	188	135	110	46	94	3	21.9
T	DAC-1008		200	143.1	2863	371	571	188	135	110	46	94	3	24.2
T	DAC-1506	150 (1589)	150	227.0	3405	343	493	230	170	140	51	113	3	33.3