

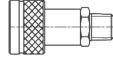
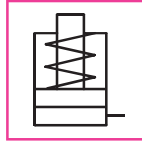
# Single-Acting, Spring Return, Flat Profile Cylinders

## CMC Series

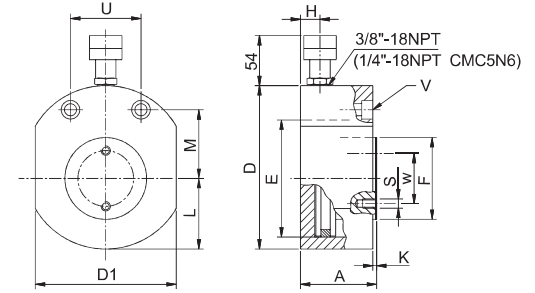
Capacity:  
**5 - 150 tonnes**

Stroke:  
**6 - 15 mm**

Maximum Operating Pressure:  
**700 bar (10,000 psi)**



**K73F** Female 3/8" Coupler Included.  
CMC5N6 with **K71F** Female 1/4" Coupler.



- Compact, lightweight design ideal for use in confined working areas where other cylinders will not fit.
- Operate in any directional position.
- Grooved piston rod end for improved load grip.
- Wiper seal prevents dirt penetration & extends cylinder working life for model 10 tonne & above.
- Nitride anti-corrosive treatment provides excellent corrosion & wear resistance in harsh environments.
- 30 tonnes & above models have two threaded holes in the rod end for mounting an optional tilt saddle.
- All models have two through holes for easy fixturing.
- Removable carrying handle for 75 tonne & above.
- Ideal for precision levelling of machinery, transformers, bridge sections, engines positioning etc.



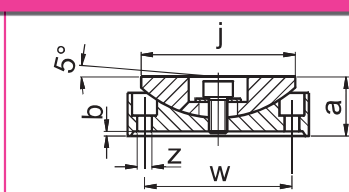
**ZTT Tilt Saddle** (Optional) – to reduce the effects of any off-centred loads. *Refer Details Below*

### SELECTION CHART

Force (PUSH) Tonnes (kN)	Stroke mm	Effective Area cm <sup>2</sup>	Oil Volume cm <sup>3</sup>	MODEL	Closed Height	Outside Dia.	External Dimension	Bore Dia.	Piston Rod Dia.	Coupler Height	Rod Protrusion	Distance from Rod Axis to the Outside Dia.	Distance from the Mounting Holes to the Rod Axis	Distance between the Mounting Holes - Centres	Through Holes for ISO- 4762 Screws	PCD mounting Holes for Tilt Saddle	Mounting Holes for Tilt Saddle	Weight
					A mm	D mm	D1 mm	E mm	F mm	H mm	K mm	L mm	M mm	U mm	V mm	W mm	S mm	kg
5 (49,5)	6	7,07	4	CMC5N6 **	33	59	41	30	24	16	1	20,5	22,5	28,5	M5	-	-	0,6
	15	7,07	11	CMC5N15	42					19								0,8
10 (111)	10	15,86	16	CMC10N10	43	78	58	45	35	19	1	29	34	37	M6	-	-	1,6
20 (198)	10	28,29	28	CMC20N10	52	100	76	60	45	19	1	39	40	50	M10	-	-	2,8
30 (309)	10	44,14	44	CMC30N10	59	115	95	75	55	19	1	48	44	52	M10	44	2xM5	4,2
50 (496)	15	70,86	106	CMC50N15	68	143	120	95	80	19	1	60	54	67	M12	65	2xM6	6,9
75 (727)	15	103,86	156	CMC75N15	80	166	142	115	100	19	2	71	67	76	M12	65	2xM6	12,0
100 (929)	15	132,71	199	CMC100N15	86	178	160	130	100	20	2	80	75	76	M12	65	2xM6	14,5
150 (1407)	15	201	302	CMC150N15	100	217	194	160	120	23	2	97	83	117	M12	80	2xM6	24,5

Nominal value shown in 'Tonnes', see kN for the exact force @700bar. \*\* CMC5N6 with K71F (1/4" NPT) quick coupler

### ACCESSORIES: ZTT TILT SADDLES



MODEL	For use with	a	b	j	z	w	kg
ZTT30	CMC30N10	19	1	53	5,5	44	0,3
ZTT50	CMC50N15	25	1	68	6,5	65	0,9
ZTT100	CMC75N15, CMC100N15	34	2	88		1,7	
ZTT150	CMC150N15	45	3	118		80	3,4