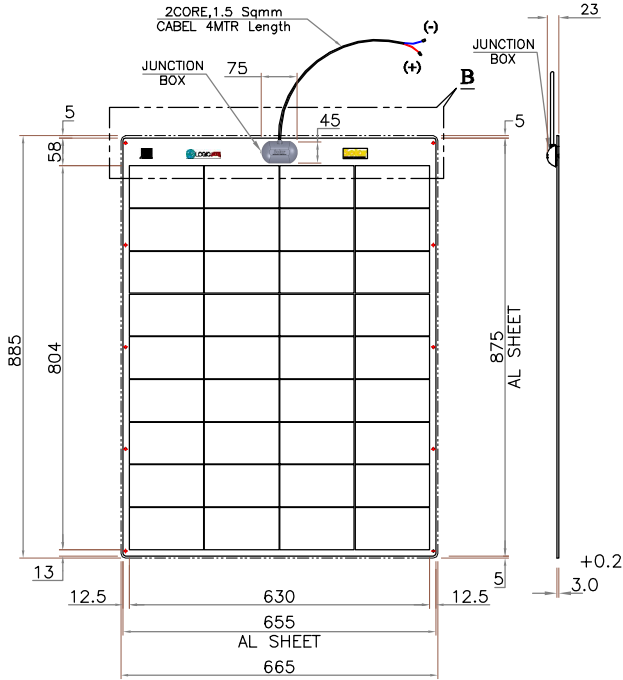


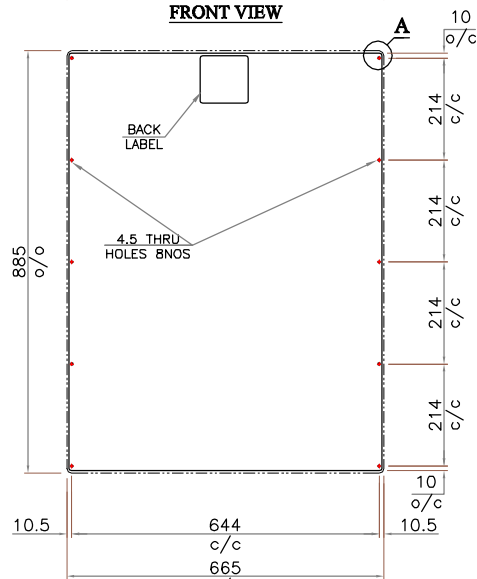
Datasheet

SOLAR LAMINATE 9046165

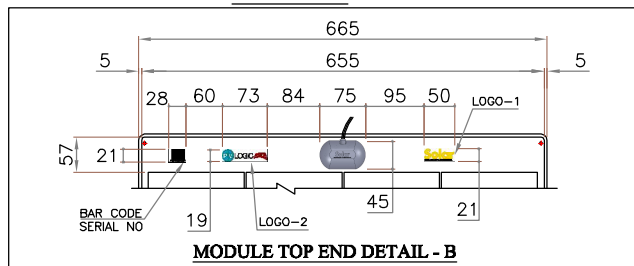
Part No 9046165 - 885 x 665 x 3.0mm



FRONT VIEW



REAR VIEW



MODULE TOP END DETAIL - B

C/C - CENTER TO CENTER, O/O - OUTER TO OUTER, O/C - OUTER TO CENTER

NOTE :

2 Years Panel warranty.

LIMITED PEAK POWER WARRANTY

- (i) 90% of minimum peak power at STC in 2 Years.
- (ii) 85% of minimum peak power at STC in 5Years.

MODEL NAME : 9046165 / 80W - 12V Flexi

ELECTRICAL PARAMETERS

MAXIMUM POWER RATING	Pmax	[Wp]	80 W
Current at max power	I max	[A]	4.45
Voltage at max power	V max	[V]	18.0
Short circuit current	Isc	[A]	4.82
Open circuit voltage	Voc	[V]	21.6
Tolerance on power output			+/- 3.0 %
Module Efficiency			13.60 %
Maximum system voltage			750V

CELL SPECIFICATION

MULTI Crystalline Si cells

Cell Efficiency			16.02 %
Number of cells			36
JUNCTION BOX [75mm x 45mm x 19mm]			STI FLEXI
Number of Diodes - BYPASS DIODES			2
MODULE WEIGHT			3.75 Kg ~

THERMAL PARAMETERS

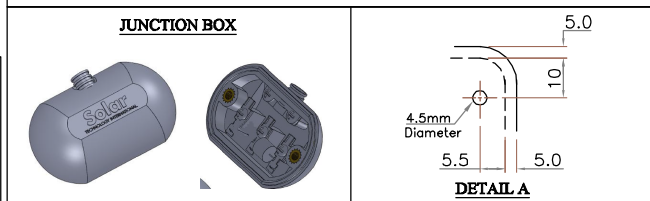
NOCT	[°C]	45 ± 2
Temp . Coefficient - Short circuit Current [A]		1.2mA / °C
Temp . Coefficient - Open circuit Voltage [V]		-2.22 mV / °C / Cell

1. Wp (Watt peak) = Peak Power Air Mass AM = 1.5 Irradiance E = 1000W/m² Cell Temperature Tc = 25°C

2. Normal operating Cell Temperature at : Irradiance E = 800W/m² Cell temperature Tu 20°C Wind speed Vw = 1 m/s

3. Temperature Range = - 40° C to + 80°C

4. Diagonal lifting of module plane Per IEC 61215 Test requirements



SOLAR MODULE LAYUP VIEW

