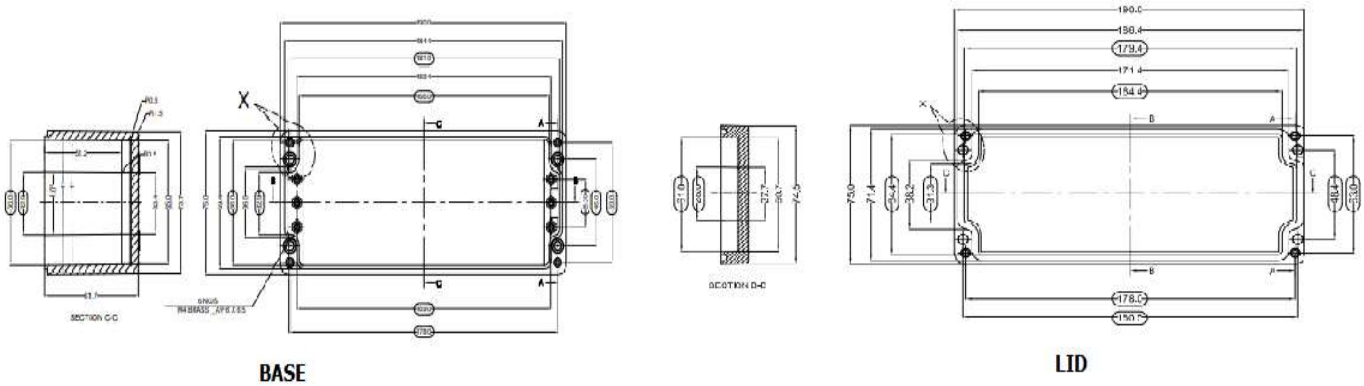


# Datasheet

ENGLISH

## RS PRO Black Fibreglass Reinforced Polyester Enclosure

Stock No: 190-4279



PRODUCT SPECIFICATION - STANDARD	
Dim (LxWxH):	190 x 75 x 75
Model No:	
Order No :	

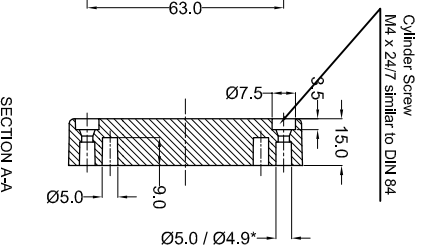
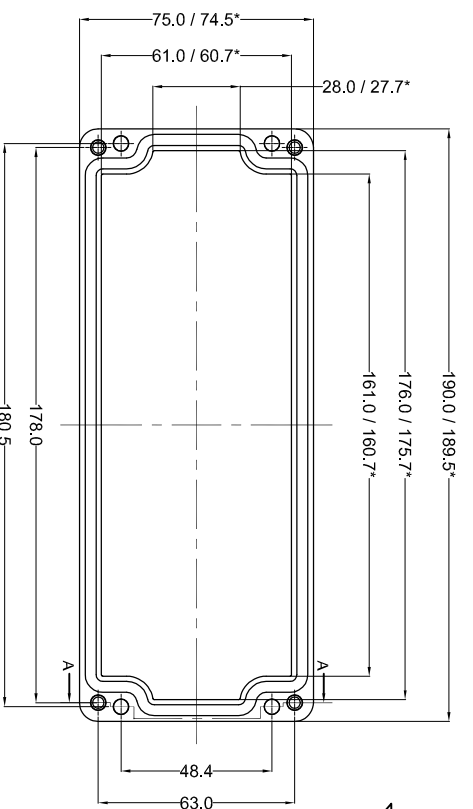


TECHNICAL SPECIFICATION	GREY	BLACK
Colour	RAL 7000	Similar to RAL 9011
Material	Glass Fiber Reinforced Polyester	Glass Reinforced Polyester - Graphite Added
Gasket:	Neoprene	Silicone
Surface Resistance	> 10 <sup>12</sup> Ohm	< 10 <sup>9</sup> Ohm
Service Temperature	- 40°C to +80°C	-60°C to +110°C
Lid Screw	Captive Screw - SS1.4301 (A2) - M4	
Tightening Torque:	1 to 2 Nm	
Protection	IP 66, EN 60529	
Impact Strength	Impact Energy > 7 Joules, EN 60079	
Flammability	Self Extinguishing, UL 94 V0	
Process Control System	ISO 9001 - 2015, IEC 80079 - 34 - 2011	

AVAILABLE ON DEMAND	
DIN Rail	TS15
Mounting Plate	Yes
External Mounting Brackets	Yes
Hinges	No
Alter Lid Screw	Yes
Sealable Lid screw	Yes



### LID

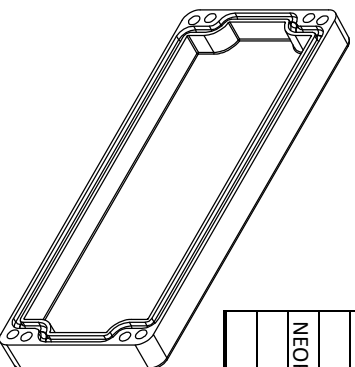


Cylinder Screw  
M4 x 24/7 similar to DIN 84

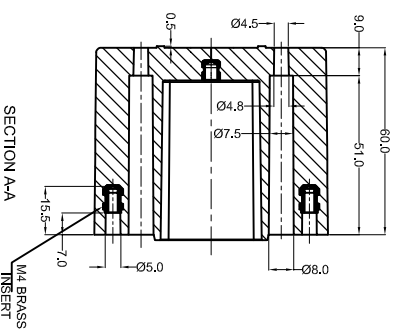
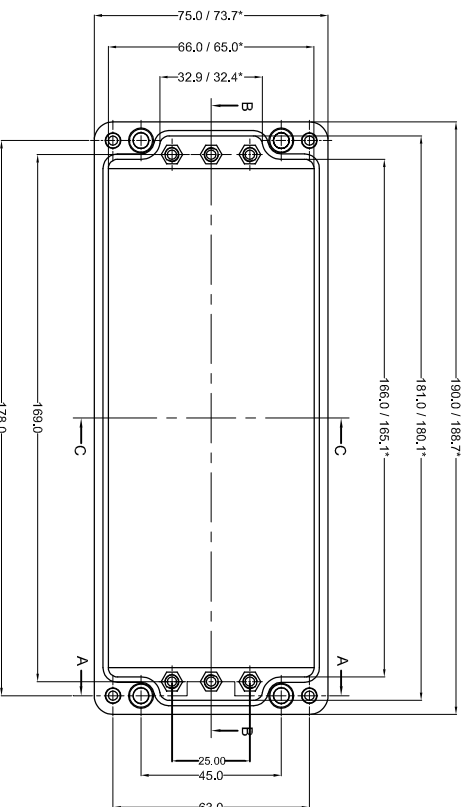
SECTION A-A

\* = Conical form tapering downward.  
Untoleranced dimensions per DIN 16901-140

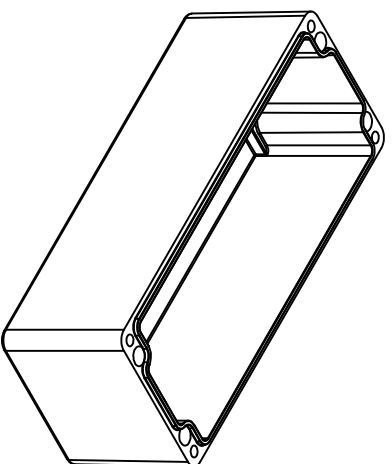
OPTIONAL ACCESSORIES		
PART NAME	QTY.	AVAILABILITY
MOUNTING PLATE	1	Y
EXTERNAL HINGE	-	N
INTERNAL HINGE	-	N
MOUNTING BRACKETS	4	Y
NEOPRENE/EMC/SILICON GASKET	1	Y
DIN RAIL TS15	1	Y
DIN RAIL TS35	-	N



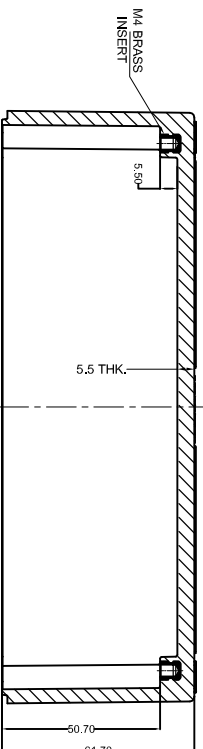
### BASE



SECTION A-A



rspro.com



SECTION B-B

RM Grade	BLACK RAL9011	GREY RAL7000	Finish
----------	---------------	--------------	--------

NO. REV. NO.	DESCRIPTION	DATE	DRAWN	CHECKED
QUANTITY	MATERIAL	MACH NAME	DATE	SIGN
	GRP		09/01/14	REPL DESIGN
TOLERANCE	WEIGHT	FINISH	09/01/14	PAYAN CHECKED
±0.5				M.S. APPROVED
±0.2	TITLE		SCALE	PARTNO.
±1.0°	GRP JUNCTION BOX 190 x 75 x 75		REV	DRG. NO.
HOLE ANGLES	ALL DIMENSION ARE IN MM		00	