



Essential LED tubes T5 Mains

CorePro LEDtube 1200mm 16W840 G5 I MX

The Essential LEDtube T5 is an affordable LED solution suitable for replacing T5 fluorescent lamps. Thanks to a unique design, Philips Essential LED tube T5 Mains can be directly installed in luminaires operating on mains power connection. The product provides a natural lighting effect for use in general lighting applications, as well as instant energy savings – an environmentally friendly solution.

Product data

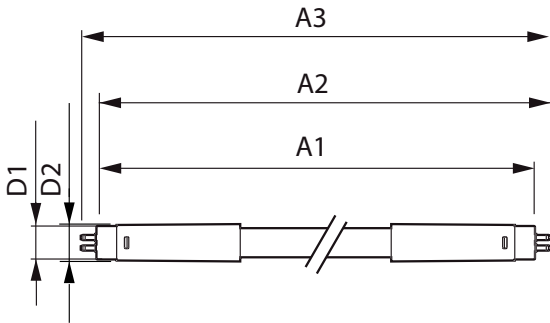
General Information		Power Consumption	
Cap-Base	G5 [G5]	Power Consumption	16 W
Nominal lifetime	30,000 hour(s)	Starting Time (Nom)	0.5 s
Switching Cycle	50,000	Warm-up time to 60% light	0.5 s
Lighting Technology	LED	Power Factor (Fraction)	0.92
		Voltage (Nom)	100-240 V
Light Technical		Temperature	
Color Code	840 [CCT of 4000K]	Ambient temperature range	-20 °C to 45 °C
Beam Angle (Nom)	200 degree(s)	T-Case Maximum (Nom)	70 °C
Luminous Flux	1,850 lumen		
Color Designation	Cool White (CW)	Controls and Dimming	
Correlated Color Temperature (Nom)	4000 K	Dimmable	No
Luminous Efficacy (rated) (Nom)	115.00 lm/W		
Color Consistency	<6	Mechanical and Housing	
Color rendering index (CRI)	80	Product Length	1,200 mm
LLMF At End Of Nominal Lifetime (Nom)	70 %	Bulb Shape	Tube, double-ended
Operating and Electrical		Approval and Application	
Line Frequency	50 to 60 Hz	Energy Saving Product	Yes
Input Frequency	50 to 60 Hz		

Essential LED tubes T5 Mains

Approval Marks	CE marking RoHS compliance KEMA Keur certificate
Energy Consumption kWh/1000 h	- kWh
EU RoHS compliant	Yes
Product Data	
Full product code	871869666752100
Order product name	CorePro LEDtube 1200mm 16W840 G5 I MX

Order code	929001275212
Numerator - Quantity Per Pack	1
Numerator - Packs per outer box	20
Material number (12NC)	929001275212
Full product name	CorePro LEDtube 1200mm 16W840 G5 I MX
EAN/UPC - Case	8718696667538

Dimensional drawing



Product	D1	D2	A1	A2	A3
CorePro LEDtube 1200mm 16W840 G5 I MX	15.8 mm	19 mm	1,149 mm	1,156.1 mm	1,163.2 mm

