

## Datasheet

# RS Pro Steel 15 Teeth Spur Gear, 15mm Pitch Diam. 14mm Hub Diam. , 6mm Bore Diam.

RS Stock No: 878-7900



## Description:

### Steel Metric Spur Gears - Narrow Face

- Steel EN8 (080M40/080M46) or equivalent
- 20° pressure angle
- DIN Standard - DIN 867, DIN 3962, DIN 3963, Grade / Quality 9 or equivalent
- Standard tolerance, unless otherwise stated  $\pm 0.25\text{mm}$

### Note

SSN type gears come with M4 grub screws fitted

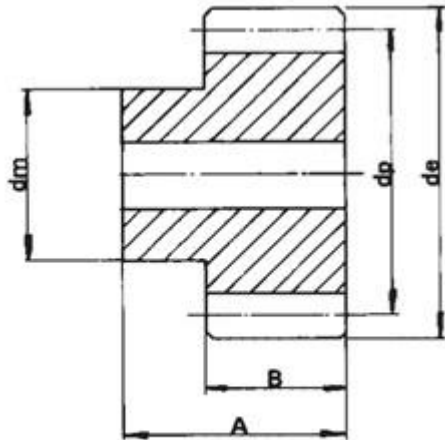
## Specifications:

Bore Diameter:	6mm
Face Width B:	5mm
Hub Diameter (dm):	14mm
Material:	Steel
Module:	1
Number of Teeth:	15
Pitch Diameter (dp):	15mm
Outside Diameter (de):	17mm
O/A Width A:	11



## STOCK GEARS

### Metric Spur Gears in Steel



Type B

Note - SSN10/10B & SSN10/12B are hobbed type pinions with cutter run out after the 5mm face width. SSN Type gears come with M4 grub screws fitted. One screw in 10 tooth gear two screws in other sizes.

All dimensions in mm

Note: SSB10/12B - SSB10/18B are hobbed type pinions with cutter run out after the 10 mm face width.

Note \*\* SSB Gears have black oxide finish

Intermediate sizes & Special gears to drawing up to 1000mm diameter

Standard : to DIN 867, DIN 3962, DIN 3963, Grade / Quality 9 or Equivalent

Standard tolerances, unless otherwise stated  $\pm 0.25\text{mm}$ .

Code	Type	No. of Teeth	Pitch $\varnothing$ dp	Bore $\varnothing$ H8	Hub/ Boss $\varnothing$ dm	Outside $\varnothing$ de	O/A Width A	Face Width B
8787897	B	10	10	6	12.5	12	11	5
8787907	B	12	12	6	14	14	11	5
8787900	B	15	15	6	14	17	11	5
8787904	B	20	20	6	14	22	11	5
8787913	B	25	25	6	14	17	11	5
8787916	B	30	30	6	14	32	11	5
8787910	B	35	35	6	14	37	11	5
8787929	B	40	40	6	14	42	11	5
8787922	B	50	50	6	14	52	11	5
8787926	B	60	60	6	14	62	11	5