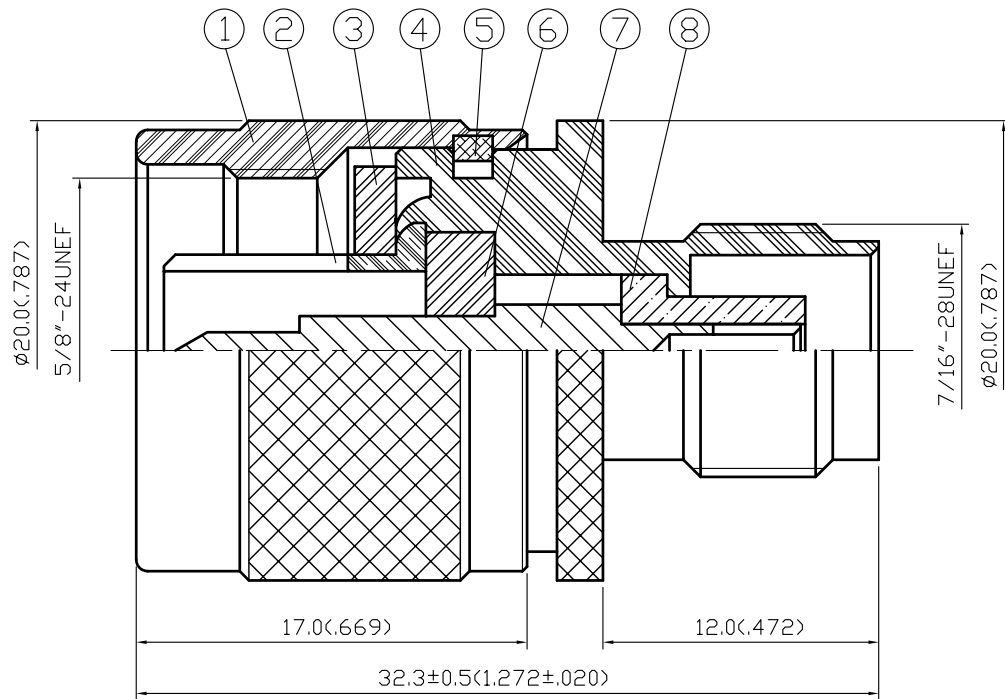


NO	DESCRIPTION	DATE
⚠	BACKGROUND FORMAT UPDATED	01.06.03



NOTES: UNLESS OTHERWISE SPECIFIED

1. BODIES: BRASS PER JIS-C3604
2. CENTER CONTACT: BRASS PER JIS-C3604
3. INSULATION: TEFLON PER ASTM D1457 AND ASTM D1710
4. CONNECTOR INTERFACE PER MIL-STD-348A
5. PART TO BE CLEAN AND FREE OF BURRS

8	INSULATION	TEFLON	1	NONE
7	CENTER CONTACT	BRASS	1	GOLD
6	INSULATION	TEFLON	1	NONE
5	WASHER	BRASS	1	NONE
4	BODY	BRASS	1	NICKEL 100 μ" MIN.
3	GASKET	SILICONE	1	RED
2	CHASSIS	BRASS	1	NICKEL 100 μ" MIN.
1	SHELL	BRASS	1	NICKEL 100 μ" MIN.
NO	DESCRIPTION	MATERIAL	Q'TY	FINISH



製圖	DRAWN	TOLERANCE	品名	11-33 (50Ω)	日期	DATE	版次	REV.
	梁齡允							
檢圖	CHECK	TOLERANCE	單位	DWG.NO.	11-0107			
	沈淑美							
認定	APPROV	TOLERANCE	比例					
	余賢德							
		ANGLE	±5°					