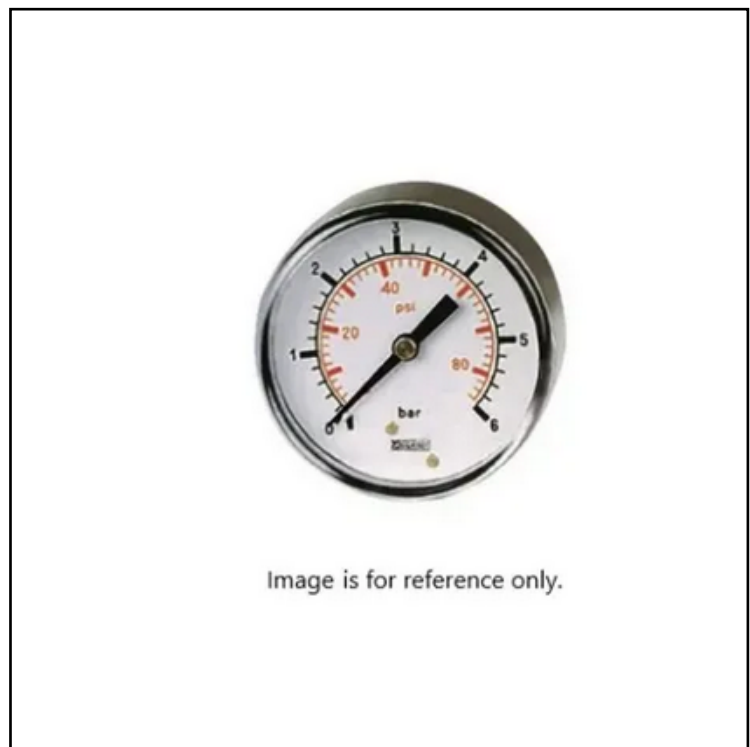


FEATURES

- Dry pressure gauge
- Dual scale
- Centre back connection

RS PRO Dry Pressure Gauges

RS Stock No.: 2351296



Dual Scale Gauge – Centre Back Connection

Product Description

Part No.	Thread	Max. Pressure Scale	Gauge Dia.
2351296	1/8" BSPT	0 – 10 bar / 0 – 160 psi	50 mm

Features

- Dry pressure gauge
- Dual scale – bar / psi
- Centre back connection
- 1/8" BSPT thread
- 40 mm gauge diameter

General Specifications

Temperature range	-20°C to +60°C
--------------------------	----------------

Materials

Case	Steel
Dial	Aluminium
Window	Acrylic
Pointer	Aluminium
Bottom connection	Brass

Similar Products

Part No.	Thread	Max. Pressure Scale	Gauge Dia.
2351290	1/8" BSPT	0 – 4 bar / 0 – 60 psi	40 mm
2351292	1/8" BSPT	0 – 10 bar / 0 – 160 psi	40 mm
2351295	1/8" BSPT	0 – 10 bar / 0 – 160 psi	50 mm
2351296	1/4" BSPT	0 – 10 bar / 0 – 160 psi	50 mm