

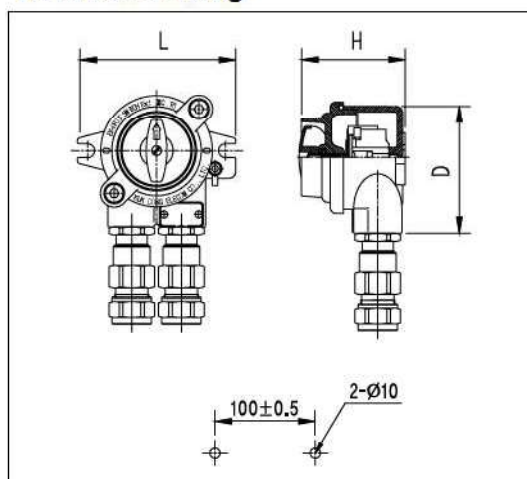
## FRAME PROOF SWITCH / SX-21d



### Model no. and Dimensions

Model no.	Capacity	L	D (mm)	H	Weight (kg)
SX-21d	250V, 16A, DPST	100	92.5	76	1.7

### Technical Drawing



### Application

Hazardous areas, Zone 1 and Zone 2  
Ex "d" Flameproof enclosure

### Design

According to rules of the standard IEC79-0,79-1,529

### Features

Protection degree : Ex-d IIC T6, IP66  
Remoter control circuit  
-20°C to +45°C as standard

### Materials

Body : Cast brass alloy  
Cover : Cast brass alloy

### Finish

Powder coated blue green 7.5BG 7/2  
and enamelled up to 70~80 $\mu$ m thickness

### Specification

Cable entry : Two(2) cable glands NPT 3/4"  
(Max. out diameter 18mm cable)  
Mounting : 2 mounting holes each, dia.10mm