



Datasheet

ENGLISH

Nylon Tubular Bridge Handle

Fixing Type

Plain bores for fixing with bolts from above.

Material

Reinforced nylon (15% glass filled PA6)

Standard Handle Colour

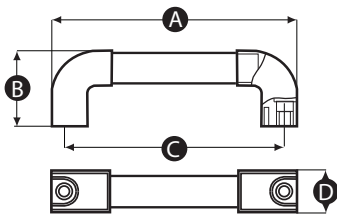
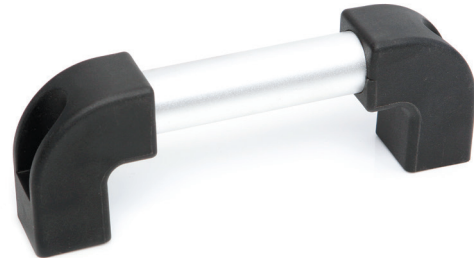
Black ends / silver metal tube

Finish

Matt

Thread

Moulded bore



Part No.	A	B	C	D	Bore size (mm)
7027822	232	78	210	41	10
7027825	274	78	250	41	10