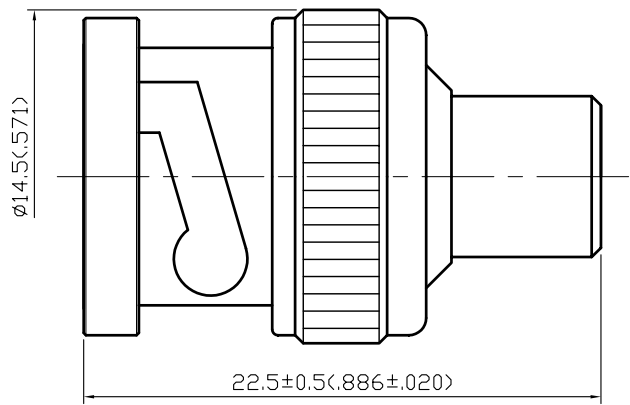


NO	DESCRIPTION	DATE
⚠	REDUCE SPRING WASHER FROM 2 PCS TO 1 PC	06.06.97
📐	BACKGROUND FORMAT UPDATED	11.20.03



- NOTES: UNLESS OTHERWISE SPECIFIED
1. BODIES: BRASS PER JIS-C3604
  2. CENTER CONTACT: BRASS PER JIS-C3604
  3. CONNECTOR INTERFACE PER MIL-STD-348A
  4. PART TO BE CLEAN AND FREE OF BURRS

10	CHASSIS	BRASS	1	NICKEL 100 μ" MIN.
9	RESISTOR	1/2W-75Ω	1	NONE
8	BODY	BRASS	1	NICKEL 100 μ" MIN.
7	WASHER	BRASS	1	NICKEL 100 μ" MIN.
6	SPRING WASHER	SK-5	1	NICKEL 100 μ" MIN.
5	WASHER	BRASS	1	NICKEL 100 μ" MIN.
4	GASKET	RUBBER	1	NONE
3	CENTER CONTACT	BRASS	1	GOLD
2	INSULATION	TEFLON	1	NONE
1	SHELL	ZINC	1	NICKEL 100 μ" MIN.
NO	DESCRIPTION	MATERIAL	Q'TY	FINISH

APPROVED by \_\_\_\_\_ DATE: \_\_\_\_\_

DESCRIPTION		SMA STRAIGHT PLUG						
製圖	DRAWN	TOLERANCE	品名	13-52-3/ROHS COMPLIANT	日期	DATE	版次	REV.
	Elvis	.X ±0.2	TITLE	(75Ω)				
檢圖	CHECK	.XX ±0.1	單位	mm(in)	DWG.NO.	13-0254		
	Monica	.XXX ±0.05	比例	SCALE				
認定	APPROVAL	ANGLE ±5°	比例	4:1	<b>佳楠精密電子股份有限公司</b> CHIN NAN PRECISION ELECTRONICS CO.,LTD.			