

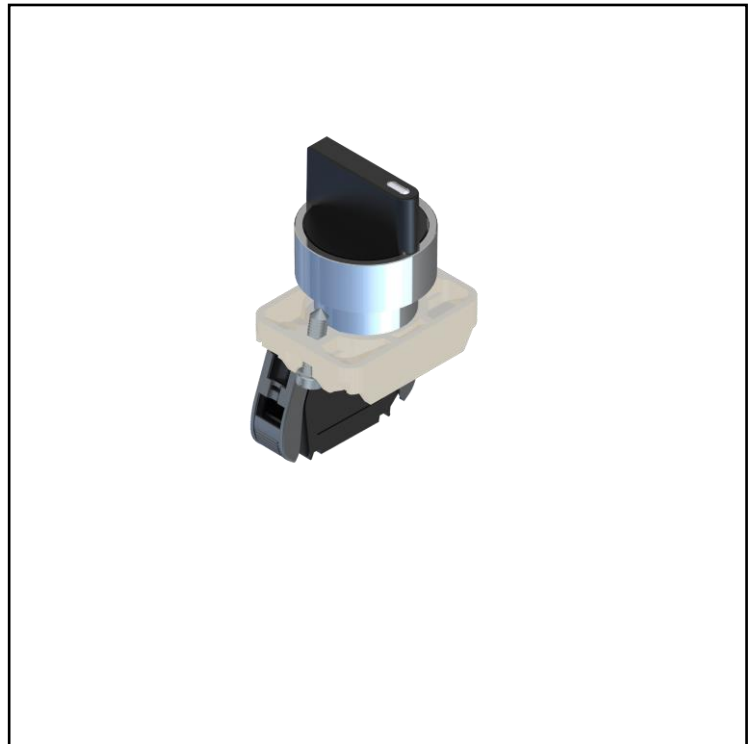
FEATURES

- Front panel mount
- Chrome-plated switch head outer
- Black short lever
- Non-illuminated
- Switch position: 2 or 3
- Contact Configuration: 1NO, 1NO + 1NC or 2NO available
- Support base
- Connecting Terminals: Screw with captive cable clamp
- Switch Actuation: Multiple options available
- Cut-out Diameter: 22.5 mm
- Outer diameter: 30 mm
- IP65 rating
-

RS PRO Selector Switch

Complete Units - Short Lever

RS Stock No.: 2383952



RS Professionally Approved Products bring to you professional quality parts across all product categories. Our product range has been tested by engineers and provides a comparable quality to the leading brands without paying a premium price.

Family Name

Product Description

These selector switches are complete units made from the highest quality materials and include a selector switch head, contact block, and support base. Upon inspection, the selector switch heads are non-illuminated and have a chromed-plated outer body and short lever actuator. The contact blocks are available in multiple contact configurations with 2 or 3 switch positions and the support base mounts securely into panels up to 6mm thick eliminating movement in the mounting hole.

General Specifications

Casing Material	Chrome-plated Zamak
Operator	Short lever selector switches 2383920 – 2 positions, return from right
Color	Black
Outer diameter	30
Microswitch	1NO
Connecting Terminals	Screw with captive cable clamp
Connecting Cables Dimensions [mm ²]	1 or 2 conductors - 0.5 ... 2.5

Mechanical Specifications

Operating Temperatures [°C]	-25 / +70
Stock Temperatures [°C]	-40 / +80
Mechanical durability (Millions of operations)	0.3
B10d (million of operations)	0.6
Max. switching frequency [Cicli/h]	3600

Electrical Specifications

Protection against electrical shocks	Class II - Double insulation
Rated Insulating Voltage Ui [V]	690
Pollution Degree	3
Contact rating secondo UL508	A 600 Q 300
Rated impulsive voltage [kV]	8
Conventional thermal current in air free I _{th} (θ min 40 ° C) [A] (θ)	10

Family Name

Short circuit protection (EU min 500Vac - fuses type gG (gl)) [A]	10
Rated Operational Current I _e - AC-15 (50-60 Hz) [Vac - A]	24V - 10A / 240V - 6A / 400V - 4A
Rated Operational Current DC-13 [Vdc - A]	24V - 2,8A / 125V - 0.55A / 250V - 0.27A
Resistance Between Contacts [mΩ]	25

Protection Category

IP Degree of Protection	65 (front panel) 20 (rear panel)
-------------------------	----------------------------------

Additional Information

EAN	8000126233360
Custom Tariff Number	85371098

Classification

eCI@ss (Version)	
UNSPSC (Version)	

Approvals

Declarations	CE – UKCA
Standards Met	EN 60947-5-1 and UL 508

Similar Products

Stock No.	Brand	Product Name	Attribute 1	Attribute 2	Attribute 3
XXX-XXXX	RS PRO				
XXX-XXXX	RS PRO				



Connection Diagrams / Assembly Diagrams / Illustrations / Accessories