

2-wheeled container systems

MGB 360



SULO

MGB 360

Material and Design

- Polymer components injection moulded from specially designed HDPE
- Resistant to decay, frost, heat and many chemicals
- Special UV-stabilisation provides excellent ageing characteristics
- Additives are cadmium free and environmentally friendly
- Metal components are corrosion resistant
- Quiet-running solid rubber tyres
- Suitable for all DIN lifting equipment
- Compatible with identification and weighing systems
- Fitted as standard with chip nest in accordance with RAL GZ 951/1
- High quality materials and most advanced manufacturing processes guarantee a long service life
- All container parts are recyclable
- EURO 2 lid

Quality

- Certified according to EN 840 and RAL GZ 951/1
- Constant quality control through own laboratory as well as independent institutes

Safety and Handling

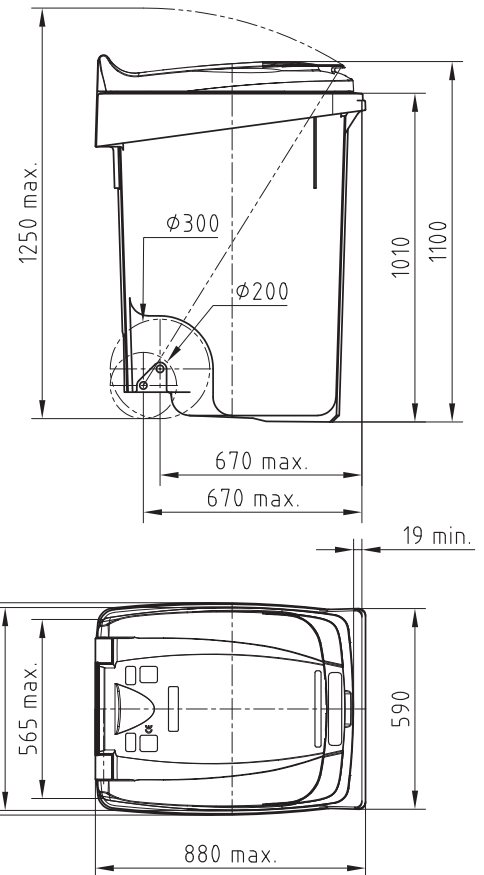
- Double angle rail for highest safety during emptying
- Safe and easy to manoeuvre
- Continuous handle on the body
- Recessed step at the rear to aid tilting
- Special ribs prevent containers from becoming jammed when stacked
- Particularly stable due to external position of wheels
- Open wheel case prevents accumulation of dirt
- Easy to clean due to smooth surfaces and rounded internal corners
- No water ingress when opening the lid

Colours

- Standard colours grey, green, brown, blue, yellow and red
- Special colours are available on request

Accessories

- Comprehensive range of accessories in separate brochure



all dimensions according to EN 840

Specifications

Nominal volume	Net weight	Max. load	Permitted total weight
360 litres	ca. 21 kg	139 kg	160 kg

