

Datasheet

Hi Resolution POLARISED Wi-Fi Digitale Microscope

Code: 161-3612



With polarized filter is a very innovative handheld color digital microscope with Wi-Fi wireless transmission. It breaks the conception of traditional microscope to realize the following functions: measurement, conservation, copy and transfer of images and video which are difficult for a traditional microscope. It is a small, easy to operate light and portable fun. It can be used with all the most popular smartphones, tablet and even with PC.

Main applications:

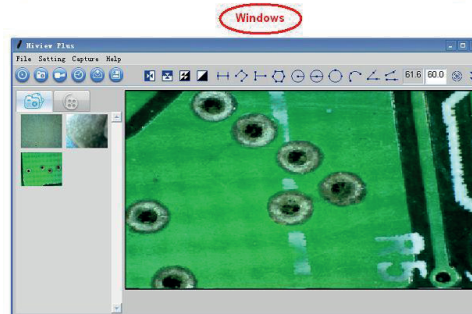
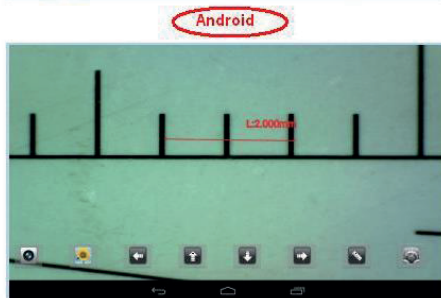
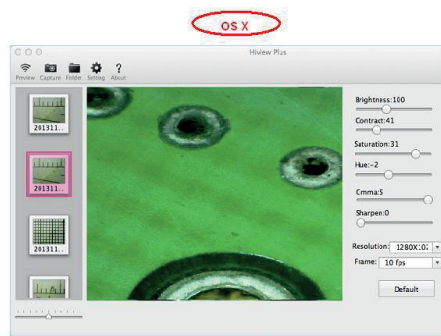
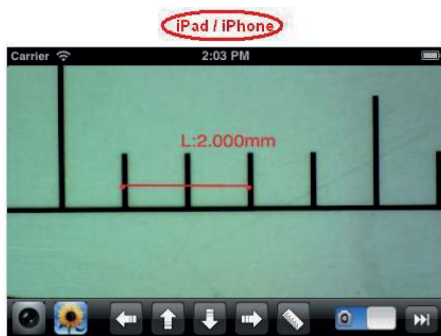
- Industrial Inspection
- Electronics/mechanical assembly and quality control
- Scientific teaching tool
- School Research tool
- Printing Inspection
- Textile inspection
- Medical analysis
- Dermatology(skin/scalp)exam
- Hair and trichology inspection
- Insect dissection/observing
- Plant dissection/observing
- Collections/jewelry Inspection
- Reading aid
- etc.

WiFi+USB Digital Camera Features		
Camera	Camera Type:	Color CMOS Camera
	Sensor:	1/2,5" Imax CMOS
	Image Quality	Highest Definition
	Optical features:	Gamma Correction: Auto
		Exposure: Auto
		White Balance: Auto
		Black Reference: Auto
		Flicker Avoidance: Auto
Defect Identification: Auto		
Color Saturation: Auto		
Button Snapshot:	Yes for WiFi and USB mode	
Dimension:	36mm(Diameter) x 75mm(Length)	
Wi-Fi	WiFi Standard:	IEEE 802.11 b/g/n
	WiFi Transmission Distance:	≥5M
	Video resolution:	1.3MP: 320(H)x 240(V),640(H)x 480(V), 1280(H)x1024(V)
	Frequency Range:	2.400 ~ 2.4835GHz
	Li-ion Battery:	Continuous Working Time—Appx.2.5 Hours
	Power Source:	5V/1A or USB (Please use ONLY usb wall adaptors that are certified according the CE and/or FCC regulations)
	OS support:	IOS / Android/ Windows /Mac.
USB	Interface:	USB 2.0
	Resolution:	5MP max
	OS support:	MAC/Windows
	MiniUSB Cable:	1.2M
Software	App for Wi-Fi Mode:	WiFiMic-Fi:IOS/MAC/Android/Windows
	Software for USB mode:	USBMic-Fi--Windows/MAC
	Software Features:	WiFiMic-Fi: Snapshot, video recording, calibration and measurement USBMic-Fi: Snapshot, video recording, Take time lapsed picture, Calibration and Measurement

HOW TO INSTALL APPS (Example)

For *iPad* and *iPhone*: search “Mic-Fi” in App Store to download an install the app.

For *Android's Smart-Phone* and *Tablet*: search “Mic-Fi” in Google Play to download an install the app



Magnification, Working distance, field of view:

Magnification	Working distance	Field of view (x)	Field of view (y)	
10	112	55	40	
20	48	25	20	
30	30	20	15	
40	17	16	12	
50	12	13	11	
60	5	10	7	
80	1	8	6	
100	0	7	5	
150	1	4	3	
200	5	3	2.5	

Listed values may differ slightly




Working distances have been taken without front cap

Contact point:

Low Cover : 90x~140x

High Cover : 60x e 220x

Unit: mm

Raccommended Products		
RCKA	RCKX	RCKY
		
<p>Dimensions: (W)8cm x (L)15cm x (H)25cm</p> <p>The RCKA articulated desktop stand holds the Mic-Fi microscope with a flexible gooseneck arm that can be bent and twisted into many positions.</p> <p>This convenient and versatile stand is compatible with all Mic-Fi handheld microscopes, which allow the user with hands free stable operations of the scope.</p>	<p>Dimensions: (W)12.7cm x (L)20.7cm x (H)30.5cm</p> <p>The RCKX is a rigid vertical desktop stand that was designed to be used with the Mic-Fi digital microscope. It provides about 20cm of vertical working distance from the object.</p>	<p>Dimensions: (W)12.7cm x (L)20.7cm x (H)30.5cm</p> <p>The RCKY stand is designed for use with the complete line of Mic-Fi digital microscope. This stand utilizes an adjustable sliding horizontal boom arm with up to 25cm reach and 360 degree rotational capability making it ideal for inspection applications where the ability to extend out over and across a specimen is required.</p>

Package:

- Wi-Fi Digital Microscope
- Trasparent Cap
- USB AC adapter
- USB cable
- Quick manual
- Plastic Stand
- Line Calibration Ruler