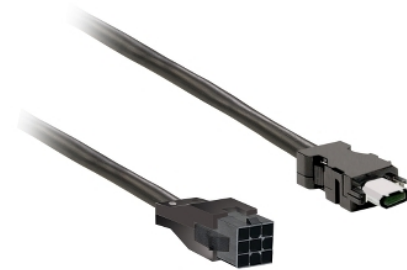


Product data sheet

Characteristics

VW3M5D1AR50

power cable 5m shielded 4x 0,82mm², BCH2 leads connection



Main

Range of product	Lexium 28
Product or component type	Power cable
Accessory / separate part type	Preassembled power cordset
Accessory / separate part category	Connection accessory
Product compatibility	Servo motor BCH2 at 50 W (40 mm) (without brake) Servo motor BCH2 at 100 W (40 mm) (without brake) Servo motor BCH2 at 200 W (60 mm) (without brake) Servo motor BCH2 at 400 W (60 mm) (without brake) Servo motor BCH2 at 400 W (80 mm) (without brake) Servo motor BCH2 at 750 W (80 mm) (without brake)
Accessory / separate part destination	Between servo motor and servo drive
Range compatibility	Lexium 28
Cable length	5 m

Complementary

Electrical connection	Free end for servo drive side Connector - Molex 4-pin for servo motor side
AWG gauge	4 x AWG 18
Net weight	0.45 kg

Packing Units

Unit Type of Package 1	PCE
Number of Units in Package 1	1
Package 1 Height	4.6 cm
Package 1 Width	28.4 cm
Package 1 Length	34.2 cm
Package 1 Weight	664 g
Unit Type of Package 2	S02
Number of Units in Package 2	5
Package 2 Height	15 cm
Package 2 Width	30 cm
Package 2 Length	40 cm
Package 2 Weight	3.654 kg

Offer Sustainability

RECh Regulation	RECh Declaration
RECh free of SVHC	Yes
EU RoHS Directive	Pro-active compliance (Product out of EU RoHS legal scope) EU RoHS Declaration
Toxic heavy metal free	Yes
Mercury free	Yes
China RoHS Regulation	China RoHS Declaration

RoHS exemption information

 Yes

PVC free

Yes
