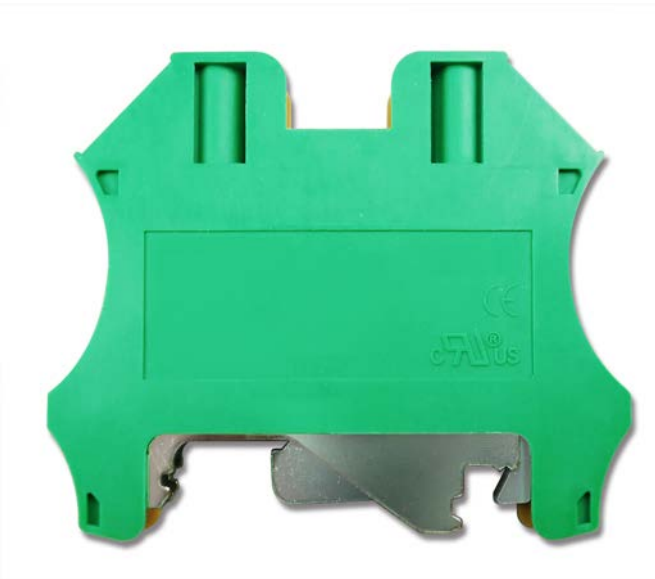


Product Datasheet

Screw Ground Terminal Blocks, 4sq.mm

Screw Clamp Ground Terminal Blocks, 26-10 AWG, 0.5-4 sq.mm

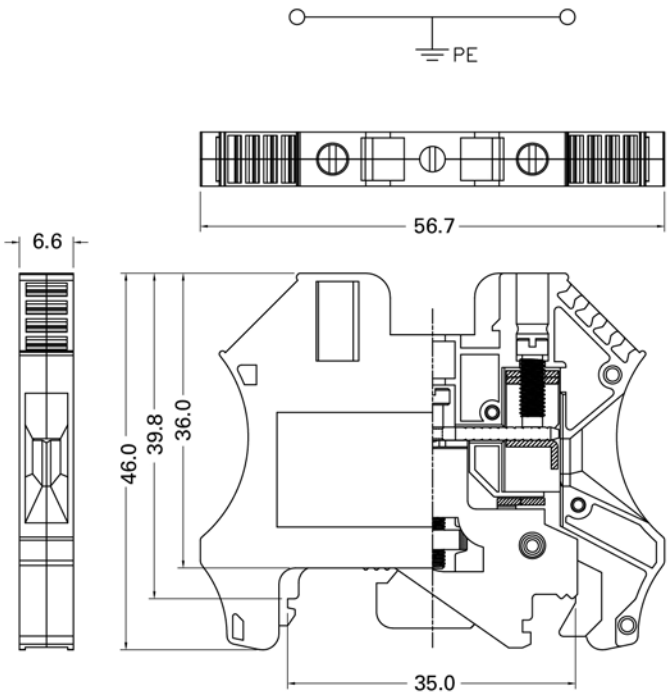
878-7566




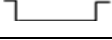


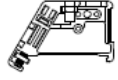
RoHS
Compliant



Dimensions in mm



Product Specifications:

Specifications	4mm ²
Technical Date	Rated voltage / Rated current / Wire size
UL	AWG 26-10
CSA	AWG 26-10
IEC	0.5-4mm ²
Insulating impulse voltage withstand/pollution degree	8KV / 3
Torque (in -lbs)	8.5
Clamping Screw (M)	M3
Insulation stripping length (mm)	8 ~10 mm
Net weight per piece	21.8g
Material / Available Color	 Green / Yellow
Rail Dimensions	T / W / H (mm)
For TS35x7.5 	6.6 x 57 x 47.5
For TS35x15 	6.6 x 57 x 55
Accessories	Cat. No.
End Bracket 	8787553
	8787556