



**BEKO TECHNOLOGIES GmbH**

A new dimension in condensate draining

# The challenge

There are many ways to drain off condensate ....



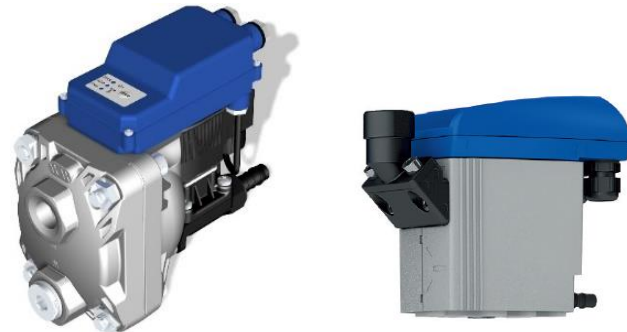
## Unreliable methods associated with high maintenance costs

- Float drains – prone to failure
- Manual valves – efficiency depends entirely on operator
- Timer-controlled valves – inefficient as actual condensate load is not taken into account
- High operating costs caused by the above mentioned factors



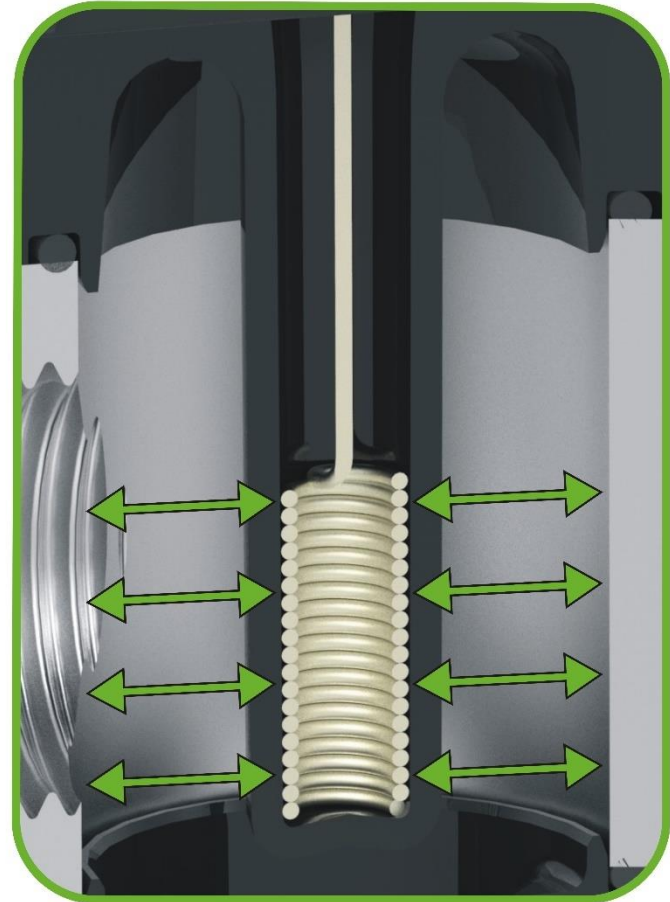
## BEKOMAT® - the high-end solution for condensate discharge

- Safe, reliable, energy-efficient and user-friendly





- **Capacitive sensor**
  - *Wear-free*
  - *Insensitive to dirt & deposits*
- **Pilot-controlled diaphragm valve**
  - *Reduction of power consumption to < 8 VA(W)*
  - *Valve core does not come into contact with condensate*
  - *Diaphragm allows for large outlet cross-section*
  - *Insensitive to dirt*
  - *Tried & tested in millions of units*
- **Removable dirt trap**
- **Service unit**
  - *Pressure- and function-tested*
  - *Maintenance interval 2 years*
  - *2-year warranty*
- **Manufactured / tested according to BEKO TECHNOLOGIES quality standard**
- **UL/CSA certificate**
- **CE Mark and FCC for USA**

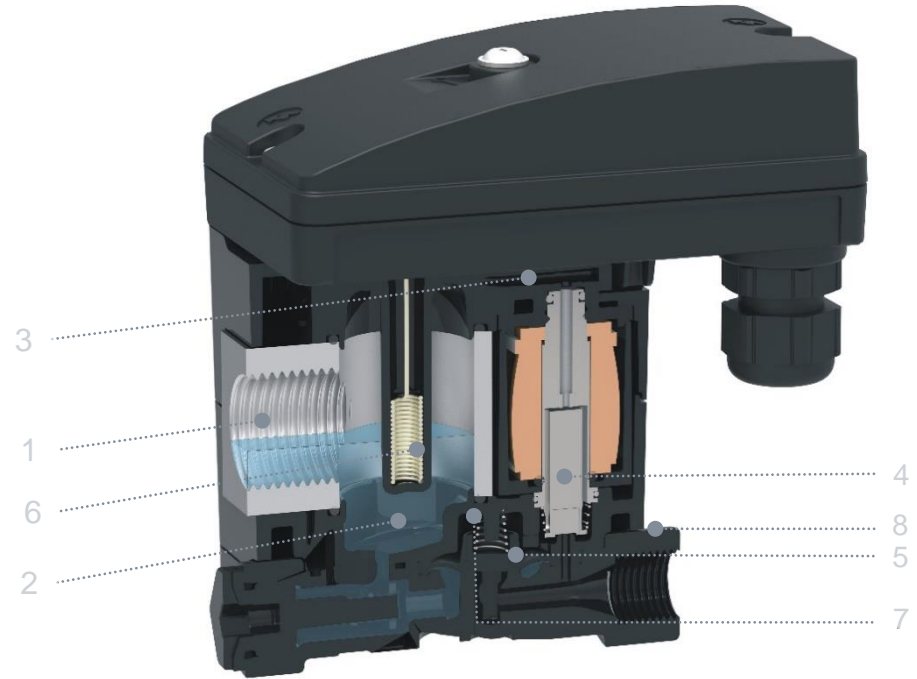


## Application-based

- Wear-free capacitive sensor for **volume-controlled condensate drainage**

## Energy-efficient

- No compressed air loss
- Reduced energy costs
- Lower CO2 emissions



- Inlet (1)
- Collecting container (2)
- Pilot control line (3)
- Solenoid valve (4)
- Diaphragm (5)
- Capacitive level sensor (6)
- Diaphragm seat (7)
- Outlet (8)

## User-friendly

- Easy installation of the condensate drain
- Electrical connection only required for initial installation
- Clear pictogram label for screw







# Easy to integrate, customised label

## Dimensioned for integration

- Low height
- Inlet positioned near base
- G ½" condensate inlet (optional ½ NPT)

## Customised label

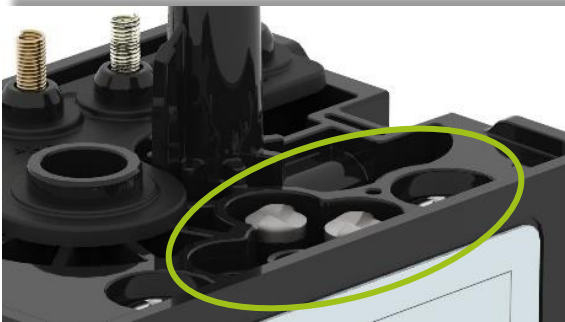
- Large label for ...
  - Your company logo*
  - Your product designation / order no.*
  - Your address*
  - Your website*





## Service unit

- Maintenance interval max. 2 years
- Pressure- and function-tested according to **BEKO TECHNOLOGIES** quality standard
- 2-year warranty
- *Secures your after-sales* by means of a customer-specific coding





## Discharge rate of BEKOMAT 30U F

Working pressure	2 bar	3 bar	4 bar	5 bar	6 bar	> 7 bar
Max. discharge rate [l/h]	3.2		4.0			
Discharge volume / maintenance interval* [l]	4,200		5,100			
Max. compressor performance [m <sup>3</sup> /min]				1.5		
Max. fridge dryer performance [m <sup>3</sup> /min]				4.5		
Max. filter performance [m <sup>3</sup> /min]				15		

*Average discharge rate: 0.85 l/h over 6,000 operating hours*

*\* maintenance interval max. 2 years*

## General technical / electrical data

Min./max. operating pressure	0.8...16 bar (12...230 psi)
Min. / max. medium/ambient temperature	+1...+70 °C (+34...158 °F)
Operating voltage	200...240 VAC ±10% / 50...60Hz
	100...120 VAC ±10% / 50...60Hz
	24 VAC ±10% / 50...60Hz
	24 VDC ±10%

## Optional equipment

- ¼" adapter
- ¼" hose connector for hose ø 8...10 mm



- **Safe and reliable**
  - Wear-free
  - Insensitive to dirt and deposits
  - Tried & tested valve technology

- **Practical and energy-efficient**
  - Power consumption < 8 VA (W)
  - Volume-controlled condensate discharge
  - Large outlet diameter

- **User-friendly and self-explanatory**



- **Easy to integrate**
  - Compact design
  - Inlet positioned near base
  - G ½" condensate inlet
- **Customised label**
  - Large label for product details, company logo, website, etc.
- **Quick and easy to service**
  - Pressure- and function-tested service units
  - No need for electrical installation during service
  - 2-year warranty

A close-up photograph of a person's hand holding a small, rectangular, yellow sticky note. The note is held between the thumb and index finger, with the other fingers curled slightly. The text 'Thank You' is written on the note in a dark blue or black cursive script. The background is a soft, out-of-focus white, suggesting a clean, bright environment. The lighting is even, highlighting the texture of the skin and the paper of the note.

Thank  
You