



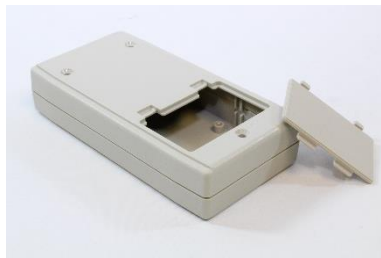
ABS Plastic Hand Held Enclosures – With Battery Compartment Option

Key Features

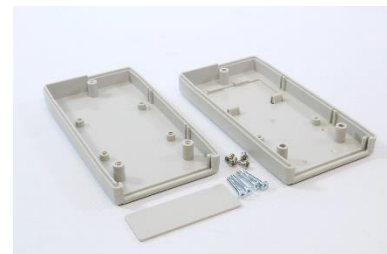
- Electronic instrument enclosures, ideally suited for mounting printed circuit boards.
- Ergonomically designed for a comfortable fit into the user's hand.
- Lap joint construction provides some protection against dust accumulation and splashing water.
- Removable front panel for easy modifications.
- Moulded in a light grey general purpose ABS plastic with a light texture (material carries a UL flammability rating of UL94 HB).
- Assembled with M3 Philips machine screws, threaded into integral brass bushings. Perfect for applications when repetitive assembly and disassembly are required (except for the two smallest sizes which use self-tapping M2.6 screws.)
- Both top and bottom halves contain P.C. board standoffs moulded in (see photos for details).
- The two largest sizes include four self-adhesive rubber feet for desktop use.



Plain version



Assembled View



Battery Door Version

Part Number No Battery Door	Part Number w/ Battery Door	Length	Enclosure Width	Depth (assembled)
1981370	1981371	100	60	25
1981372		120	70	25
1981373		165	80	32
1981373		165	100	32
1981375		185	135	40
1981377		190	100	40

* Dimensions in MM