

Datalogger and USB Interface

| | |
|--|----|
| Hardware Requirements and Setup..... | 1 |
| Software Requirements and Setup..... | 2 |
| On-Line Operation..... | 5 |
| • Run the software..... | 5 |
| • Data Convert..... | 7 |
| • Apply for Graph..... | 9 |
| • Graph Track Mode..... | 10 |
| 1. Cursor Coordinates..... | 10 |
| 2. PanXY..... | 10 |
| 3. PanX..... | 11 |
| 4. PanY..... | 11 |
| 5. ZoomXY..... | 12 |
| 6. ZoomX..... | 12 |
| 7. ZoomY..... | 13 |
| • Histogram & Ln (Percentile Sound Level)..... | 14 |
| • Control Panel..... | 15 |
| 1. LCD Contrast Setting..... | 16 |
| 2. Pause Setting..... | 16 |
| 3. LCD APO Setting..... | 17 |
| 4. LED Alarm Setting..... | 17 |
| 5. DosiMeter Setting..... | 18 |
| 6. Auto Lock Keypad Setting..... | 20 |
| 7. Timers Setting..... | 20 |
| 8. Auto Scroll Screens Setting..... | 21 |
| 9. Screen Setting..... | 22 |
| 10. Welcome Text Setting..... | 23 |
| 11. Calibration Setting..... | 23 |
| 12. Lunch Time Setting..... | 24 |
| 13. Record Interval Time Setting..... | 24 |
| • RTC (Real Time Clock)..... | 25 |
| • Read SD Card..... | 26 |
| Edit DownLoad Data..... | 27 |
| • Delete SD Card File..... | 28 |
| • Language..... | 29 |

Hardware Requirements and Setup

PC HardWare Requirements :

HDD, CD Rom, 486 PC or above, with available USB mini B / USB port

EGA or higher monitor

4M bytes or more memory size

PC HardWare Setup :

- 1) Switch off all power related to the PC
- 2) Connect the USB cable to USB port
- 3) Switch on all related power
- 4) Connect the USB mini B cable to the meter
- 5) Charger dock must be connected to the power supply

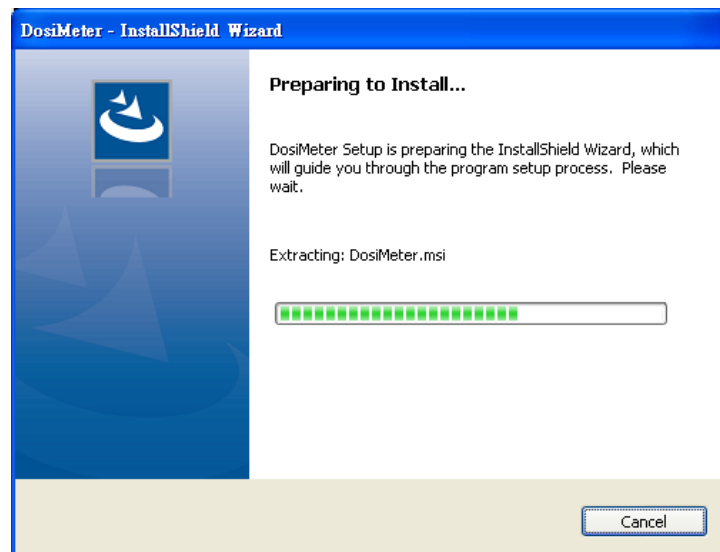
Software Requirements and Setup

- 1 Start up windows system
 - 2 Close all other applications
 - 3 Insert the disk in CD drive
- (if autorun does not start, open the CD drive then run “SetupInterface.exe”)
Follow the on-screen instructions.



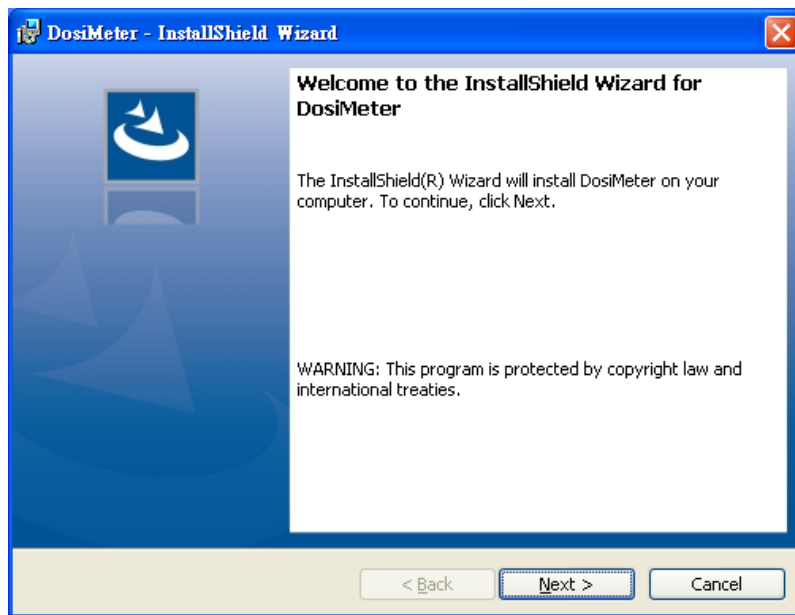
Click Software Install

1).



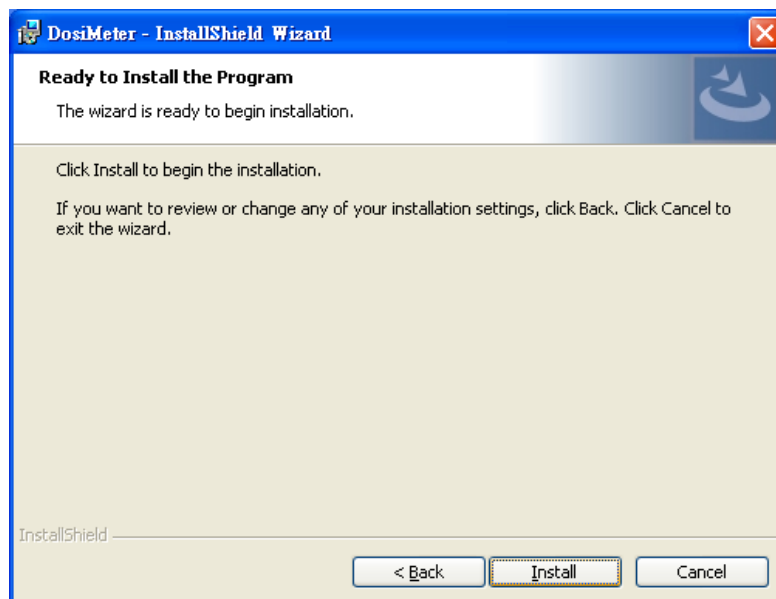
Setup will run automatically.

2).



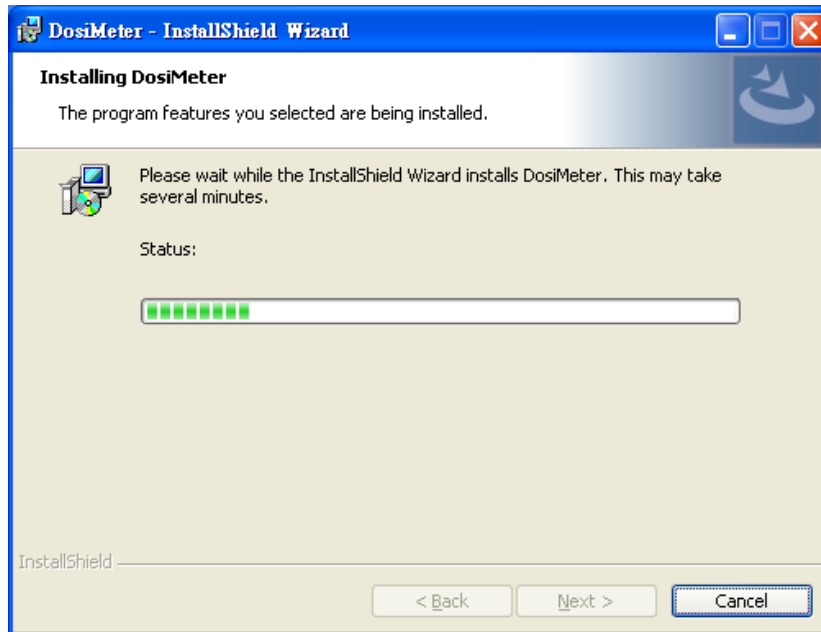
Click Next> button

3).



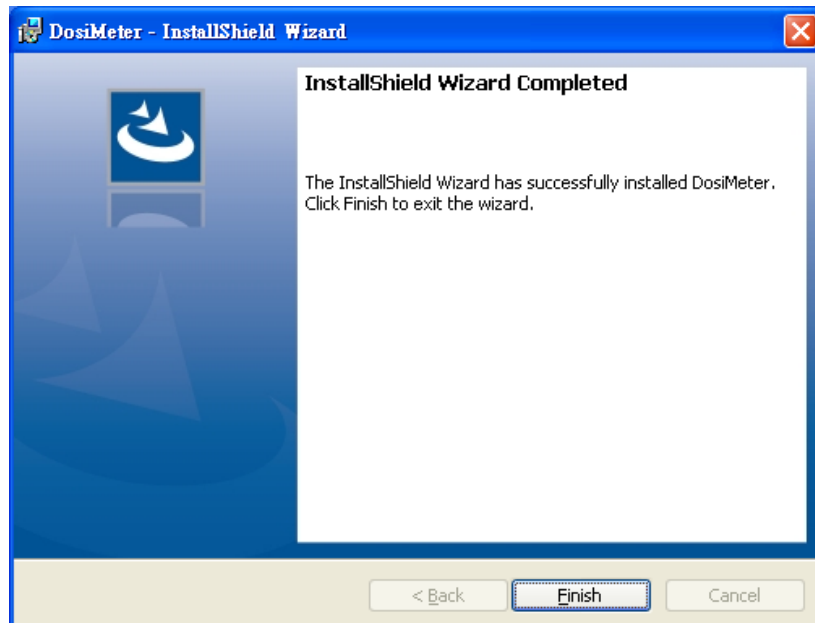
Click Install> button

4).



Setup will run automatically.

5).



Click **Finish** button to complete.

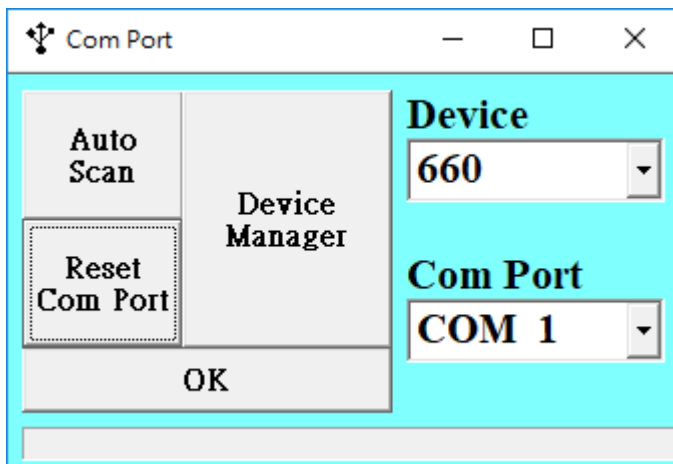
On-Line Operation

- Run the software



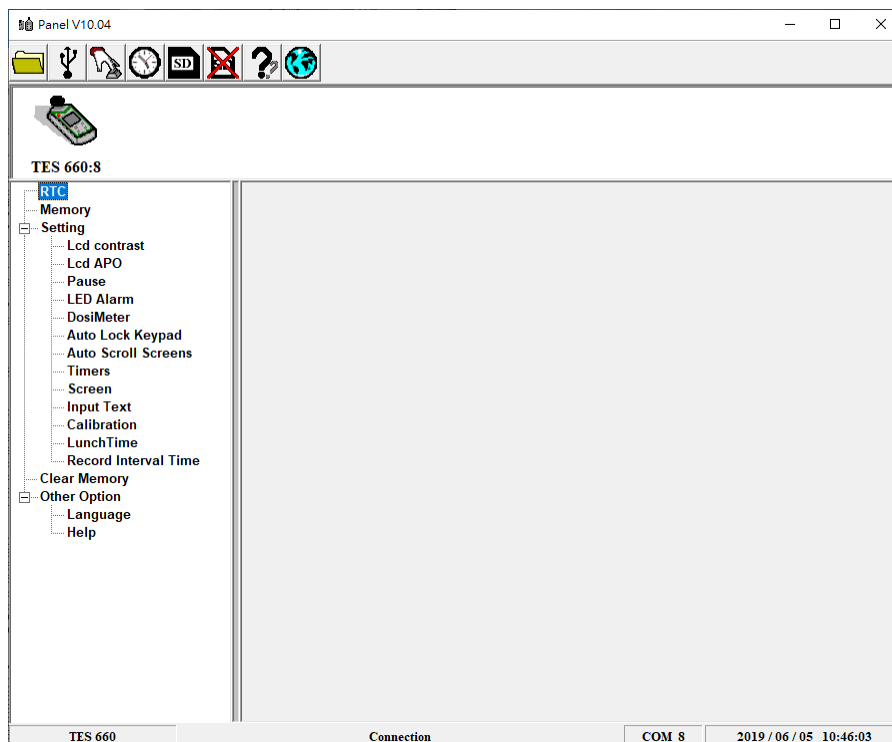
1. Click icon.

2. Check COM Port

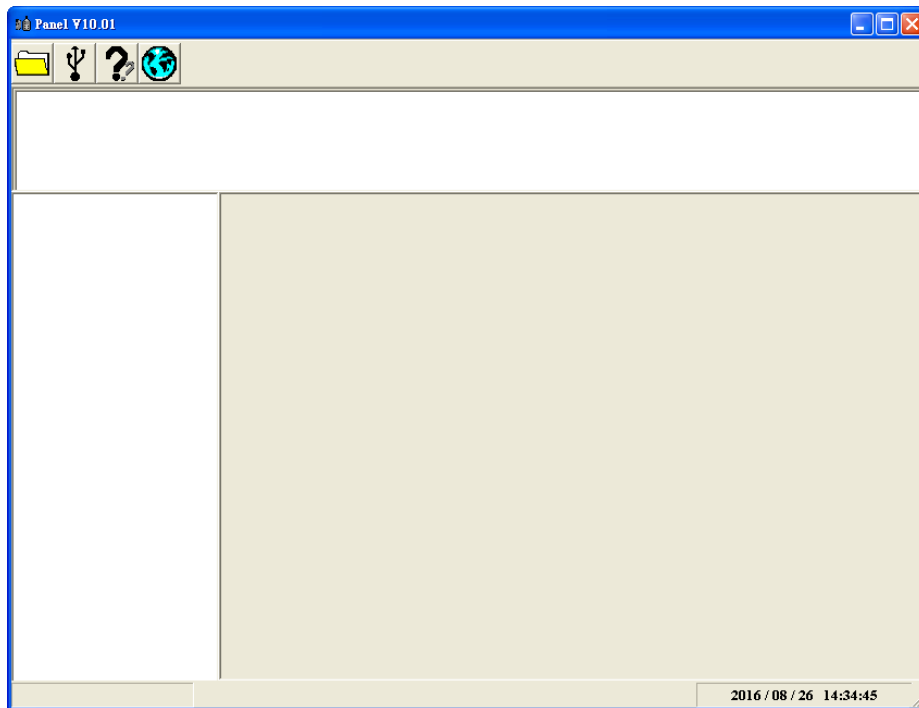


3. Main software screen

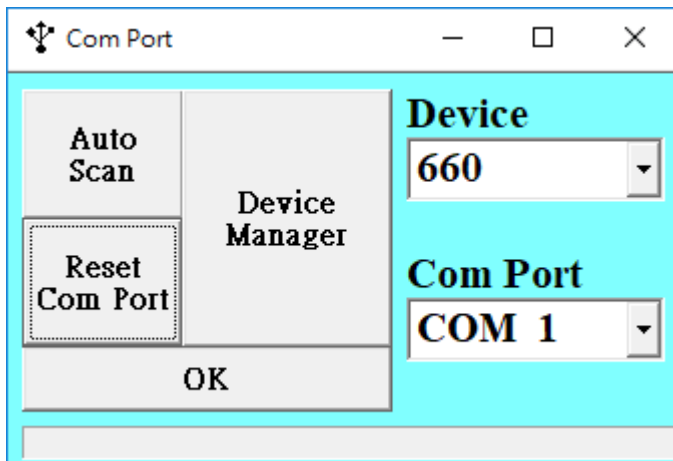
Device connecting



No Device Connection Or COM Port Error




4. Click Main toolbar  Setting comport.



Device select: 660

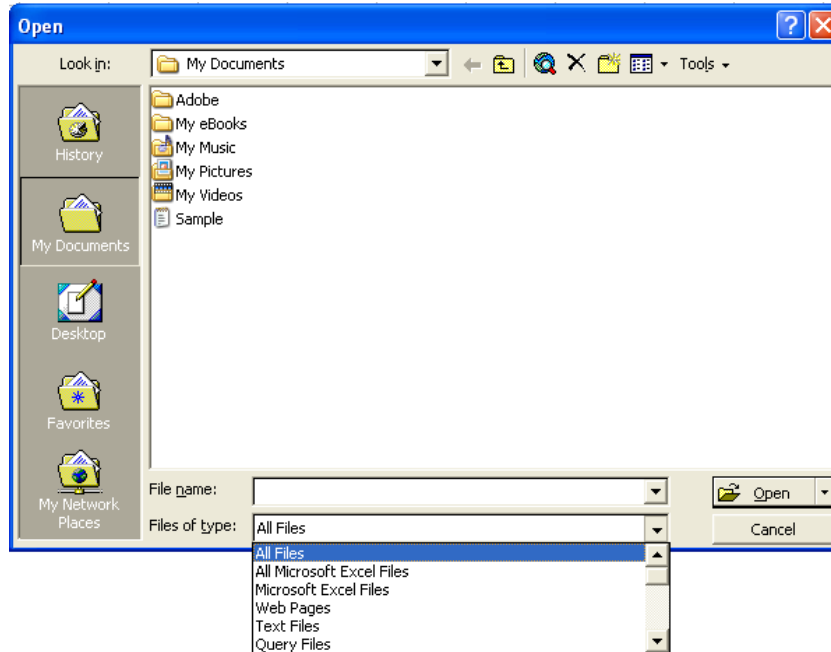
Comport select: PC link device comport

Click  button.

- **Data Convert**

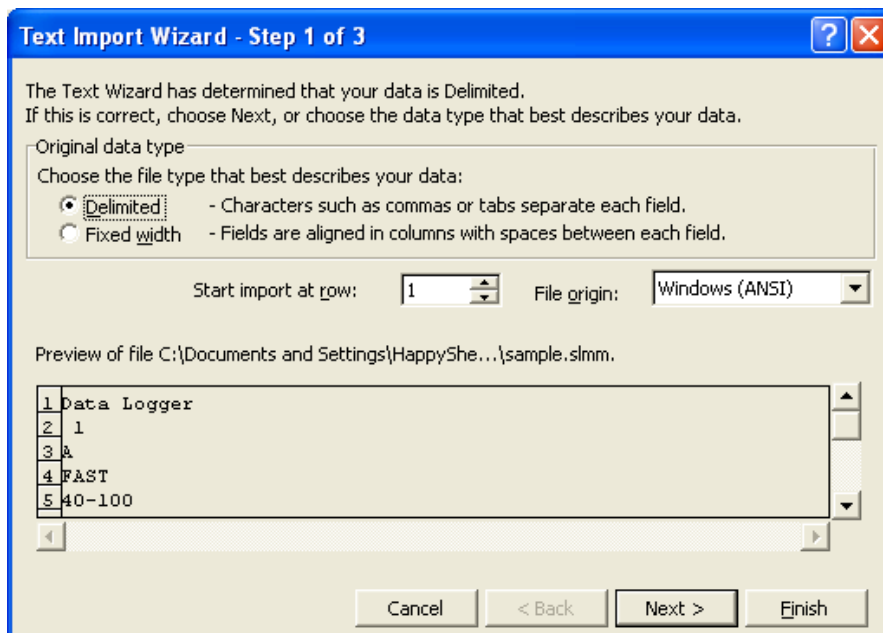
Apply for Excel

Open Microsoft Excel, find the file saved in Excel type, for example, test.xls.

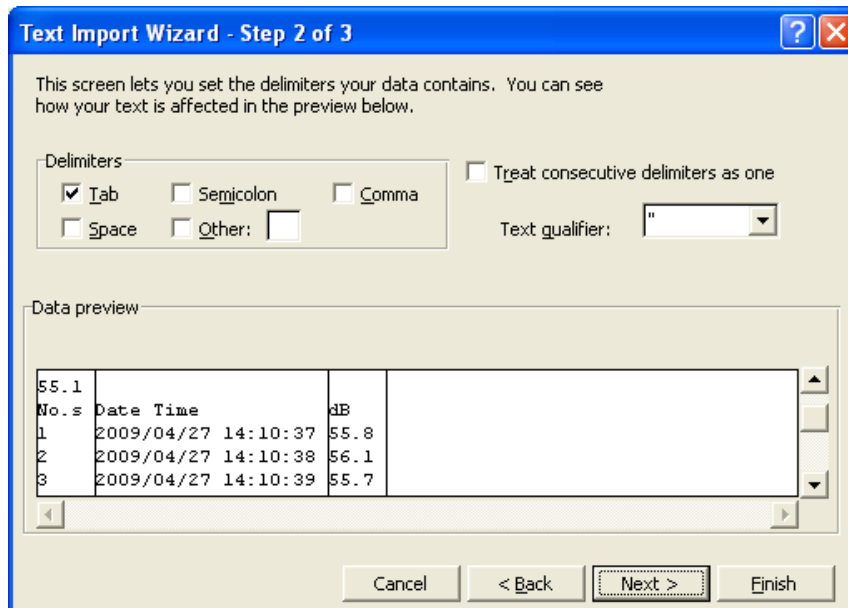


or find any file already saved in HDD, for example, sample.dat.

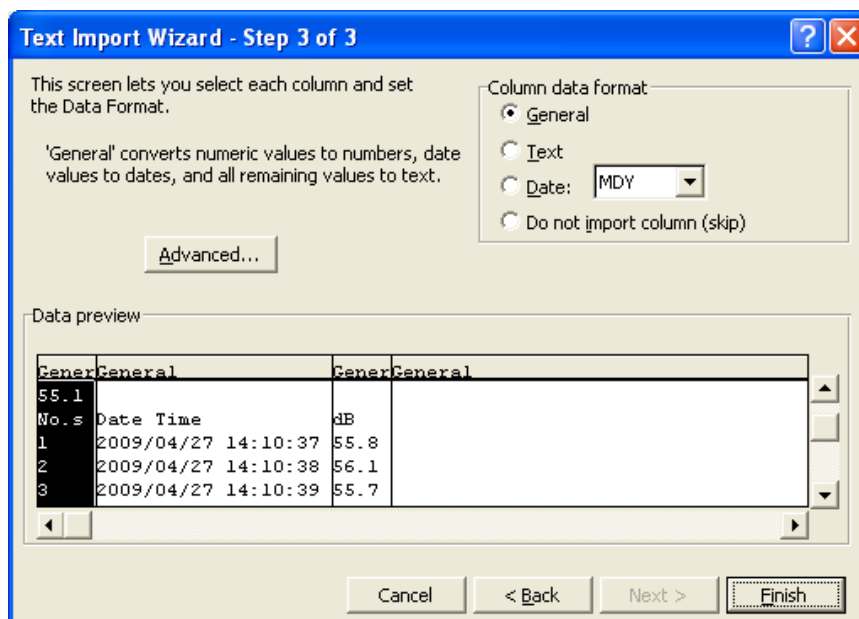
The "Text Import Wizard" then appears. Follow the steps 1 to 3 to complete.



Click Next> button




Click Next> button






Click **Finish** button

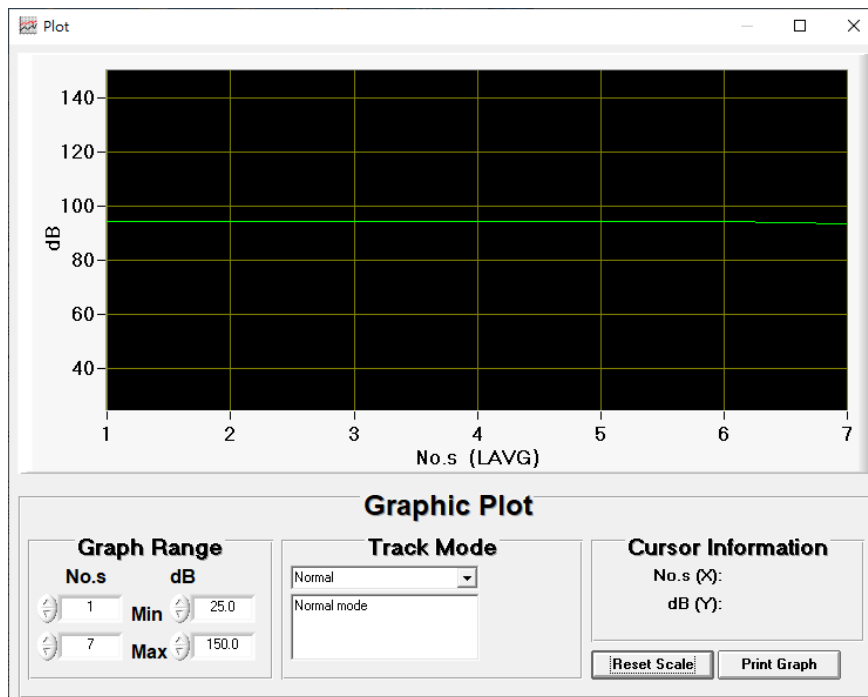
| | A | B | C | D |
|----|-----------------|-----------------|-----------------|-----------------|
| 1 | DOS 700 | | | |
| 2 | | | | |
| 3 | HeaderData | | | |
| 4 | | D1 | D2 | D3 |
| 5 | Start Date/Time | 2016/8/26 14:34 | 2016/8/26 14:34 | 2016/8/26 14:34 |
| 6 | Stop Date/Time | 2016/8/26 14:48 | 2016/8/26 14:48 | 2016/8/26 14:48 |
| 7 | Total Point | 14 | 14 | 14 |
| 8 | Threshold | 80 dB | 90 dB | 80 dB |
| 9 | Criterion | 90 dB | 90 dB | 90 dB |
| 10 | Exchange Rate | 5 dB | 5 dB | 5 dB |
| 11 | Exceedance | 105 dB | 105 dB | 105 dB |
| 12 | Interval Time | 60 Sec | 60 Sec | 60 Sec |

- **Apply for Graph**

Open a saved data file in the software program and then click  .

| HeaderItem | D1 | D2 | D3 | No.s | Date/Time | LAVG | LEQ | LCPK | LZPK |
|----------------------|---------------------|---------------------|---------------------|------|---------------------|---------|---------|----------|----------|
| Start Date/Time | 2019/05/30 11:50:36 | 2019/05/30 11:50:36 | 2019/05/30 11:50:36 | 1 | 2019/05/30 11:51:36 | 94.2 dB | 94.2 dB | 118.6 dB | 119.4 dB |
| Stop Date/Time | 2019/05/30 11:56:51 | 2019/05/30 11:56:51 | 2019/05/30 11:56:51 | 2 | 2019/05/30 11:52:36 | 94.2 dB | 94.2 dB | 105.5 dB | 105.8 dB |
| Threshold | 80 dB | 80 dB | 90 dB | 3 | 2019/05/30 11:53:36 | 94.2 dB | 94.2 dB | 105.7 dB | 105.4 dB |
| Criterion | 90 dB | 90 dB | 90 dB | 4 | 2019/05/30 11:54:36 | 94.2 dB | 94.2 dB | 99.9 dB | 100.2 dB |
| Exchange Rate | 5 dB | 5 dB | 5 dB | 5 | 2019/05/30 11:55:36 | 94.2 dB | 94.2 dB | 99.4 dB | 100.9 dB |
| Exceedance Level | 105 dB | 105 dB | 105 dB | 6 | 2019/05/30 11:56:36 | 94.2 dB | 94.2 dB | 103.5 dB | 104.6 dB |
| Record Interval Time | 1 Min | 1 Min | 1 Min | 7 | 2019/05/30 11:56:51 | 93.0 dB | 93.5 dB | 110.4 dB | 110.9 dB |
| Record Total Sets | 7 | 7 | 7 | | | | | | |
| PW Duration | 08:00:00 | 08:00:00 | 08:00:00 | | | | | | |
| Duration | 00:06:09 | 00:06:09 | 00:06:09 | | | | | | |
| LAS > dB | (>105)_00:00:00 | (>105)_00:00:00 | (>105)_00:00:00 | | | | | | |
| Exceed StopTime | 00:06:09 | 00:06:09 | 00:06:09 | | | | | | |
| Dose | 2.2 % | 2.2 % | 2.2 % | | | | | | |
| PDose | 179.3 % | 179.3 % | 179.3 % | | | | | | |
| TWA | 62.7 dB | 62.7 dB | 62.7 dB | | | | | | |
| PTWA | 94.2 dB | 94.2 dB | 94.2 dB | | | | | | |
| LAVG | 94.2 dB | 94.2 dB | 94.2 dB | | | | | | |
| LEPd | 75.2 dB | 75.2 dB | 75.2 dB | | | | | | |
| PLEPd | 94.2 dB | 94.2 dB | 94.2 dB | | | | | | |
| LAEQ | 94.2 dB | 94.2 dB | 94.2 dB | | | | | | |
| LCEQ | 94.2 dB | 94.2 dB | 94.2 dB | | | | | | |
| LZEQ | 94.2 dB | 94.2 dB | 94.2 dB | | | | | | |
| LAE | 119.8 dB | 119.8 dB | 119.8 dB | | | | | | |

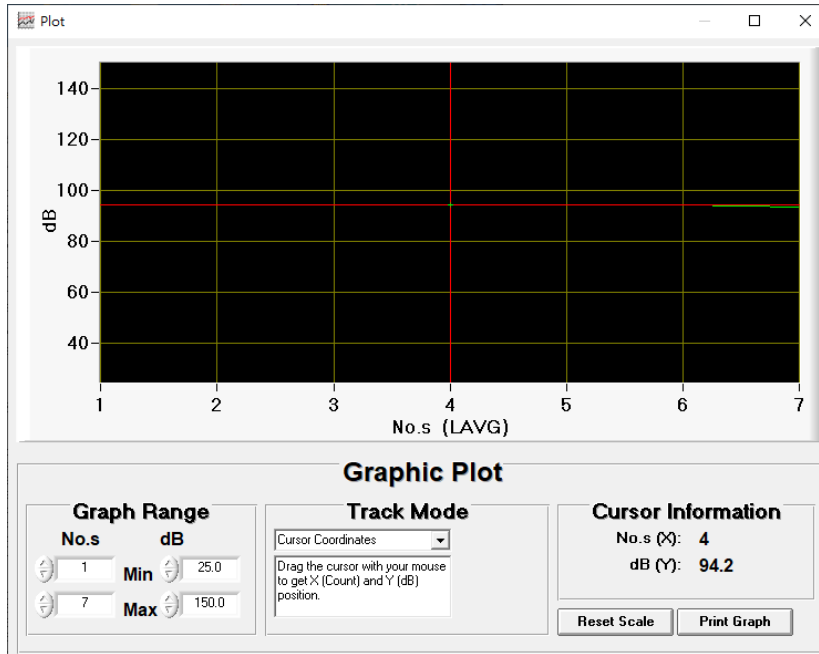
Click  Button  . Click 



- **Graph Track Mode**

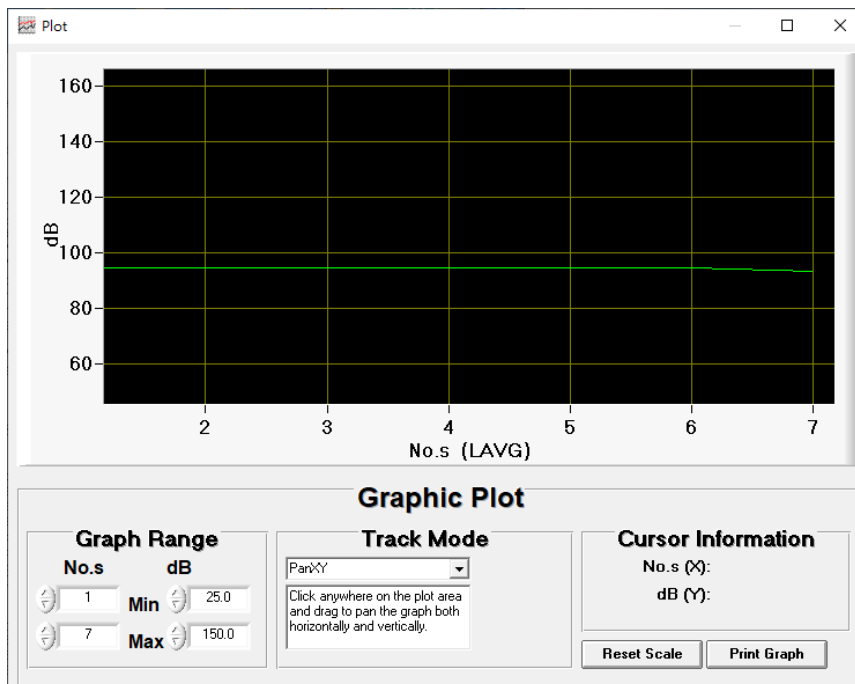
1. **Cursor Coordinates**

Drag the cursor with your mouse to get X (Count) and Y (dB) position.



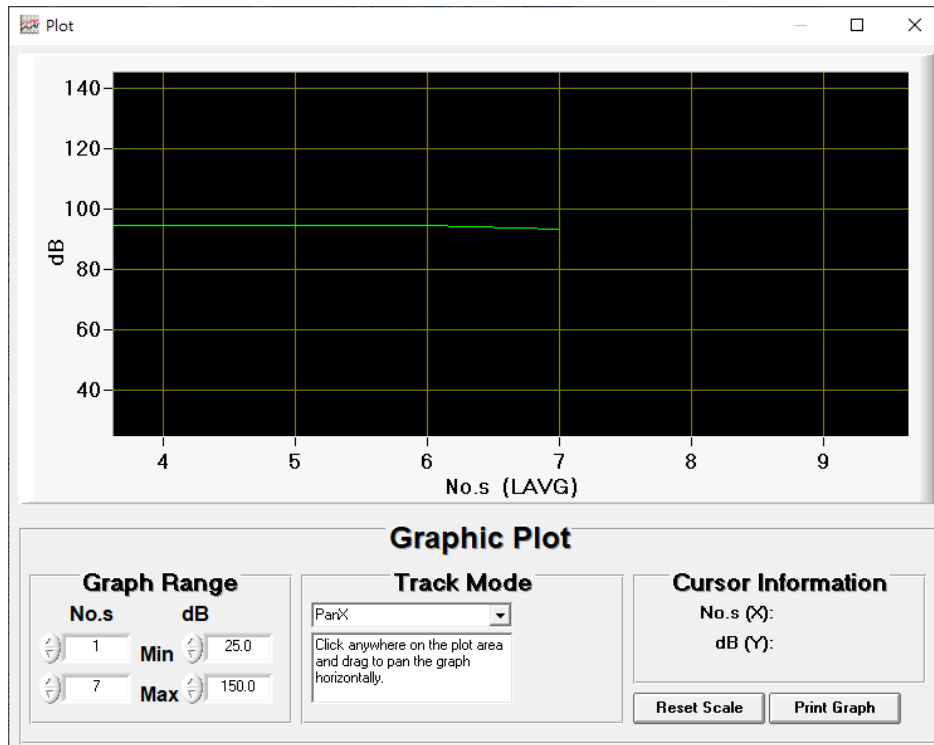
2. **PanXY**

Click anywhere on the plot area and drag to pan the graph both horizontally and vertically.



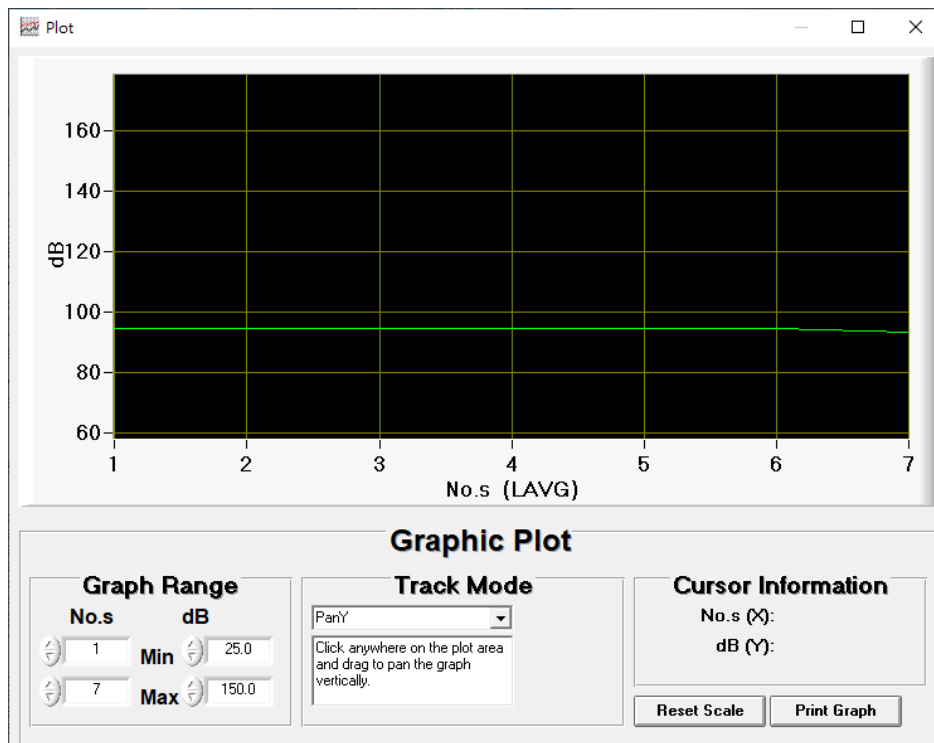
3. PanX

Click anywhere on the plot area and drag to pan the graph horizontally.



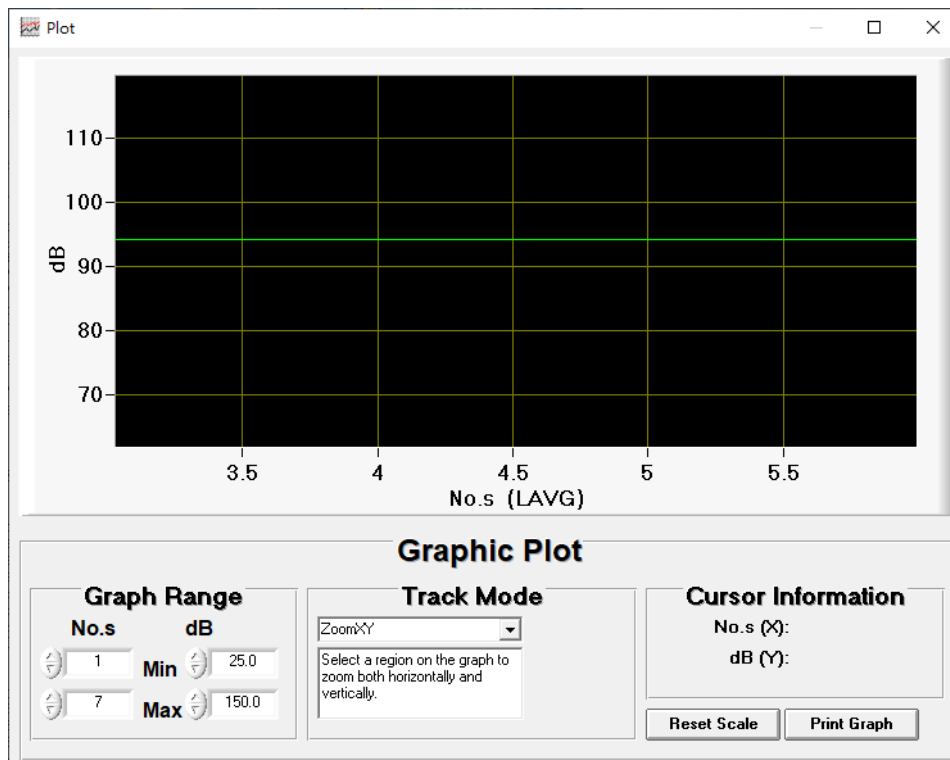
4. PanY

Click anywhere on the plot area and drag to pan the graph vertically.



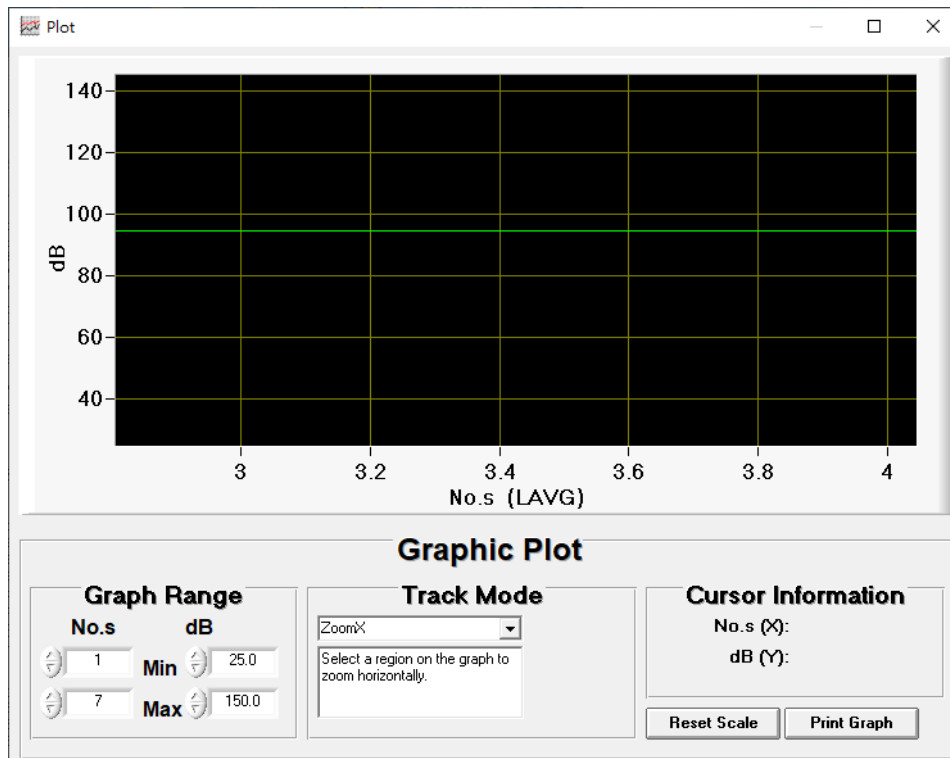
5. ZoomXY

Select a region on the graph to zoom both horizontally and vertically.



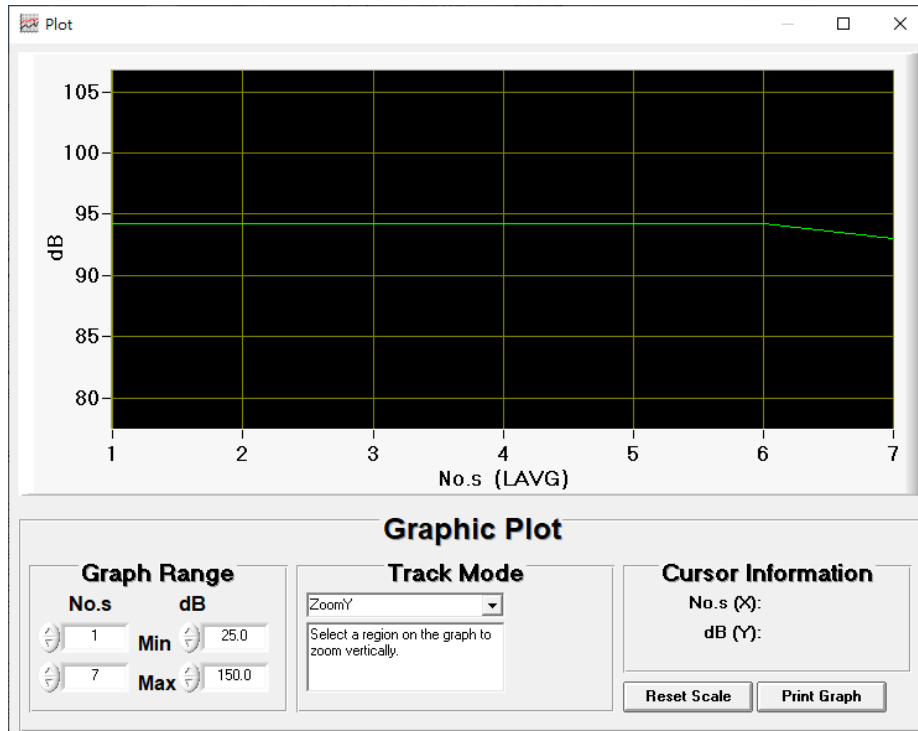
6. ZoomX

Select a region on the graph to zoom horizontally.




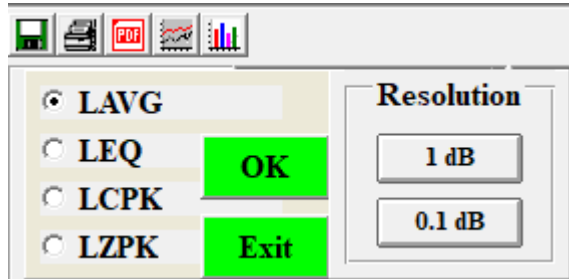
7. ZoomY

Select a region on the graph to zoom vertically.

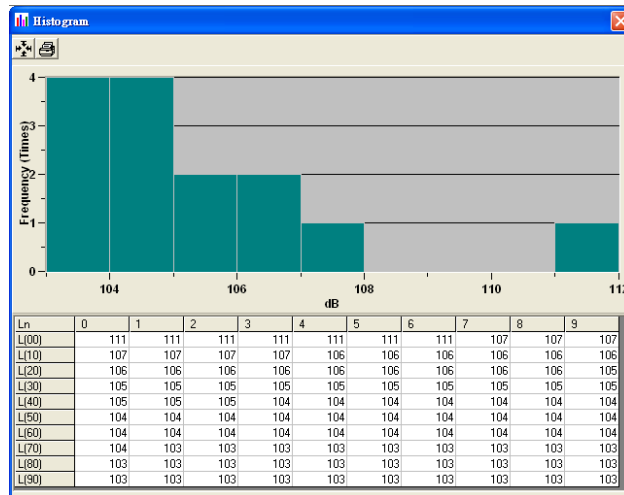



- **Histogram & Ln (Percentile Sound Level)**

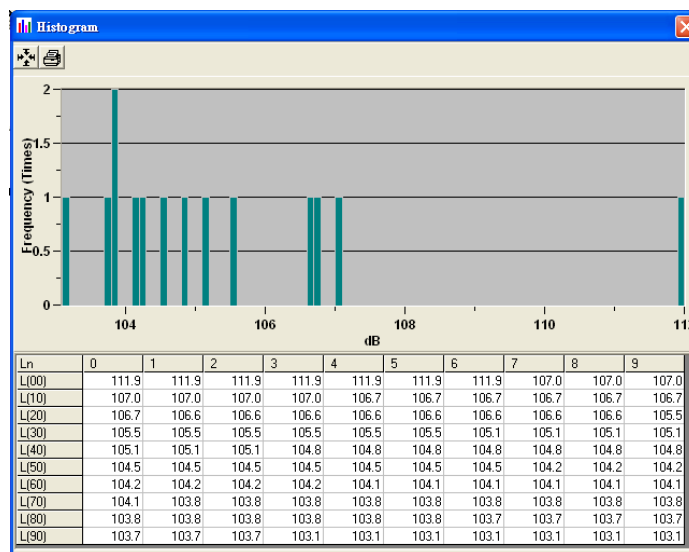
Open a saved data file in the software program and then click .



In the window above, click  for the Revolution of 1 dB

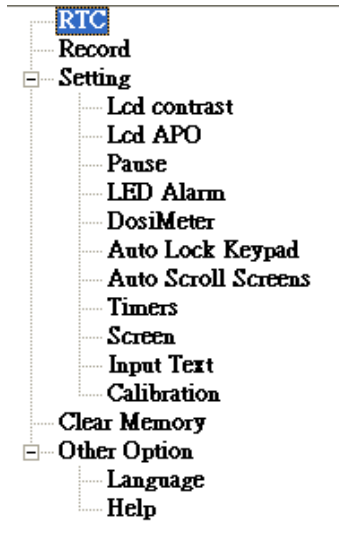


Click  for the Revolution of 0.1 dB



Click  Button to print

- **Control Panel**

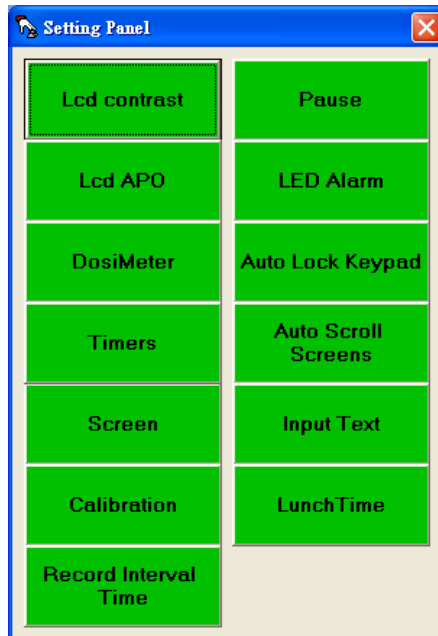


Click

Item. Don't show control panel.



Click  button or Device item **TES-660** , Show control panel.

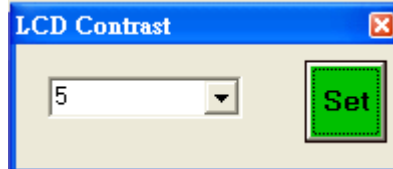


1. LCD Contrast Setting



Click Button.

Device LCD Contrast setting Get OK.



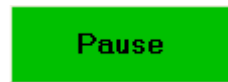
Device LCD Contrast setting Get fail.



Click Button. Show  is set OK.

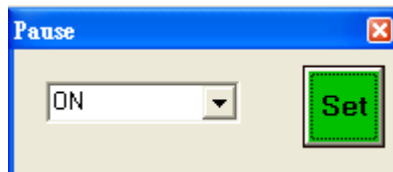


2. Pause Setting

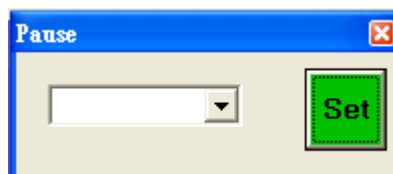


Click Button.

Device Pause setting Get OK.



Device Pause setting Get fail.



Click Button. Show  is set OK.

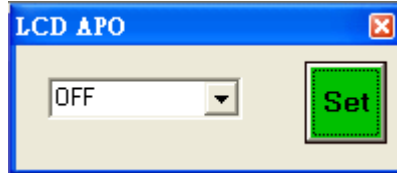


3. LCD APO Setting

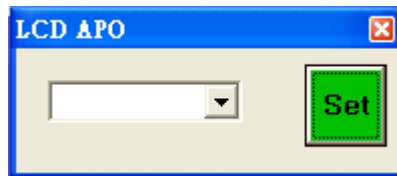


Click Button.

Device LCD APO setting Get OK.



Device LCD APO setting Get fail.



Click Button. Show



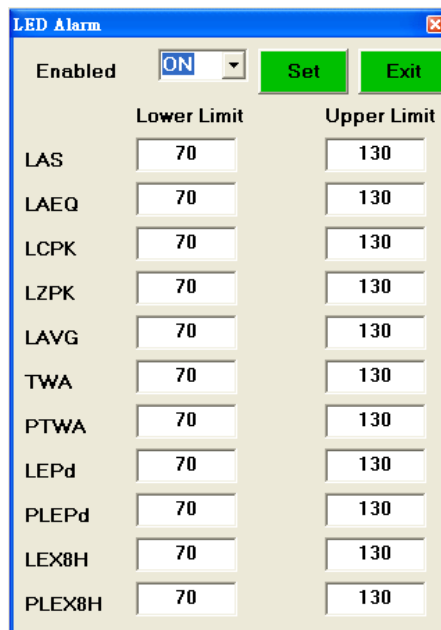
is set OK.

4. LED Alarm Setting



Click Button.

Device LED Alarm setting Get OK.



Device LED Alarm setting Get fail.

| | Lower Limit | Upper Limit |
|--------|-------------|-------------|
| LAS | 80 | 120 |
| LAEQ | 80 | 120 |
| LCPK | 80 | 120 |
| LZPK | 80 | 120 |
| LAVG | 80 | 120 |
| TWA | 80 | 120 |
| PTWA | 80 | 120 |
| LEPd | 80 | 120 |
| PLEPd | 80 | 120 |
| LEX8H | 80 | 120 |
| PLEX8H | 80 | 120 |

Click  Button. Show  is set OK.

5. DosiMeter Setting



Click  Button.

Device DosiMeter setting Get OK.

| | Meter 1 | Meter 2 | Meter 3 |
|---------------|---------|----------|----------|
| Enabled | Enabled | Disabled | Disabled |
| Standard | OSHA-90 | | |
| Threshold | | | |
| Criterion | | | |
| Exchange Rate | | | |
| Exceedance | | | |
| PW Duration | | | |

Device DosiMeter setting Get fail.

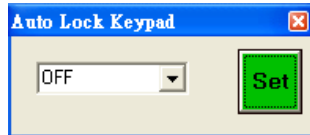
| DosiMeter | | Meter 1 | Meter 2 | Meter 3 |
|----------------------|-------------|---------|---------|---------|
| Set | Exit | | | |
| Enabled | Enabled | Enabled | Enabled | Enabled |
| Standard | OSHA80 | OSHA80 | OSHA80 | OSHA80 |
| Threshold | 70 | 70 | 70 | 70 |
| Criterion | 70 | 70 | 70 | 70 |
| Exchange Rate | 3 | 3 | 70 | 70 |
| Exceedance | 70 | 70 | 70 | 70 |
| PW Duration | 00 00 | 00 00 | 00 00 | 00 00 |

Click  Button. Show  is set OK.

6. Auto Lock Keypad Setting

Click  Button.

Device Auto Lock Keypad setting Get OK.



Device Auto Lock Keypad setting Get fail.

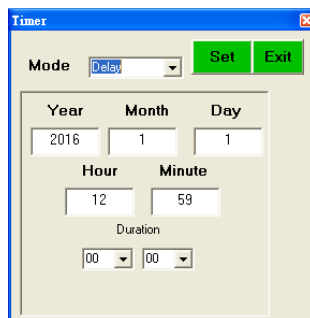


Click  Button. Show  is set OK.

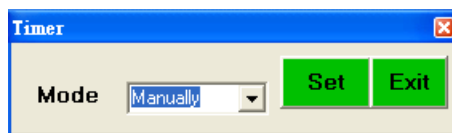
7. Timers Setting

Click  Button.

Device Timers setting Get OK.



Device Timers setting Get fail.

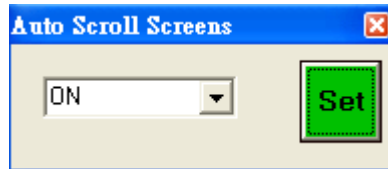


Click  Button. Show  is set OK.

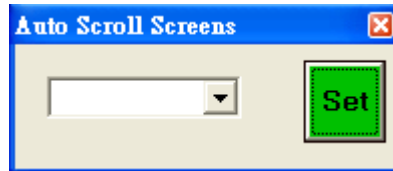
8. Auto Scroll Screens Setting



Click  Button.

Device Auto Scroll Screens setting Get OK.

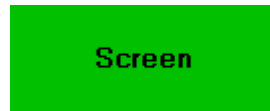


Device Auto Scroll Screens setting Get fail.



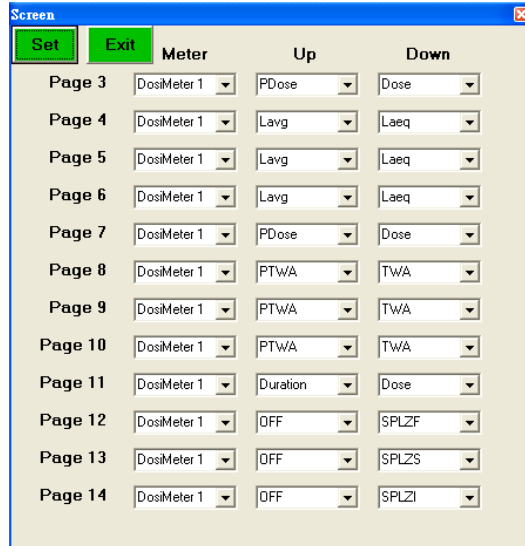
Click  Button. Show  is set OK.

9. Screen Setting

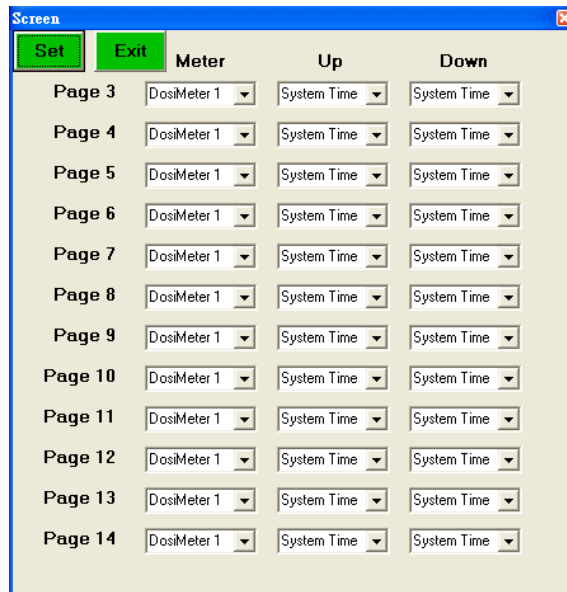


Click **Screen** Button.

Device Screen Setting Get OK.



Device Screen Setting Get fail.



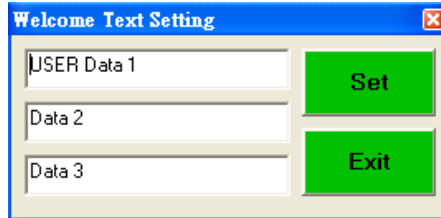
Click **Set** Button. Show  is set OK.

10. Welcome Text Setting

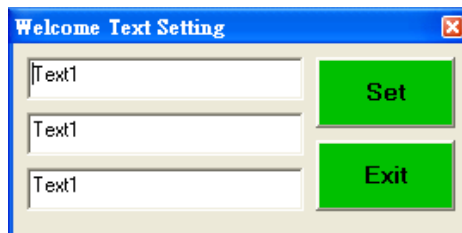


Click Button.

Device Welcome Text setting Get OK.

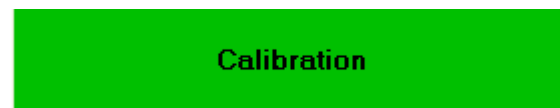


Device Welcome Text setting Get fail.

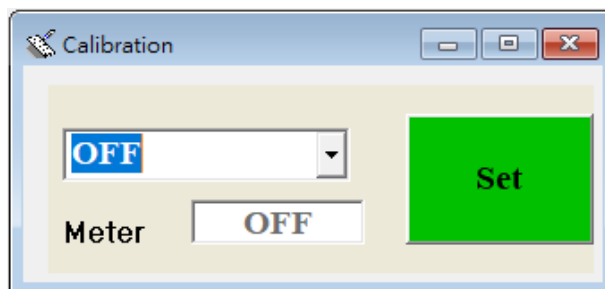


Click Button. Show  is set OK.

11. Calibration Setting



Click Button.



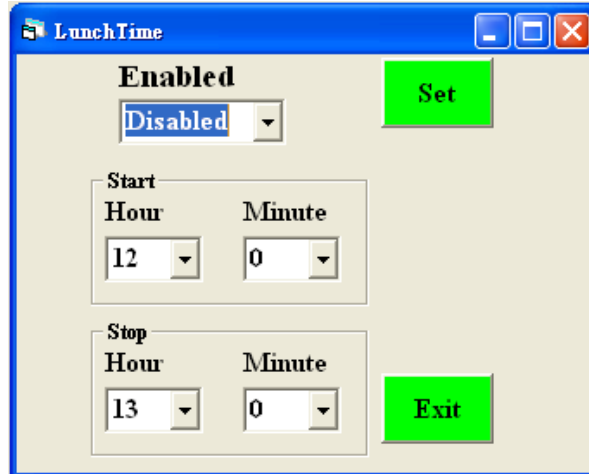
Click Button. Show  is set OK.

12. Lunch Time Setting



Click Button.

Device Get Lunch Time OK



Click Button. Show  is set OK.

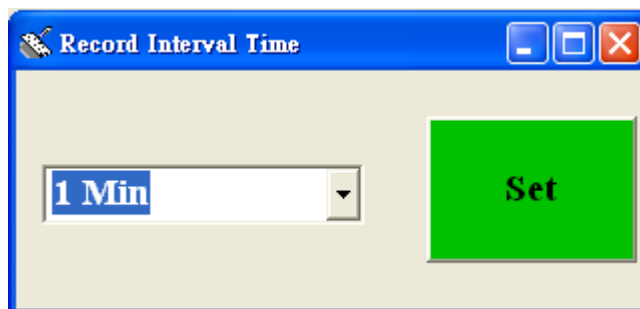


13. Record Interval Time Setting



Click Button.


Device Get Interval Time OK

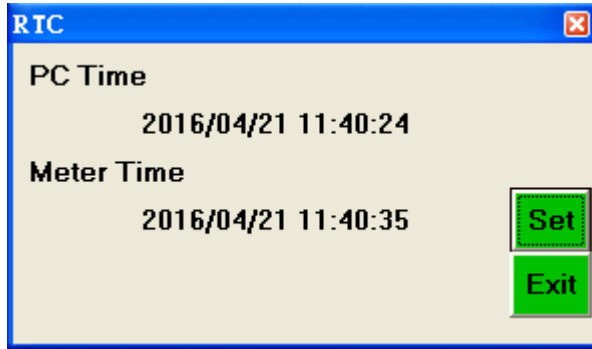




Click Button. Show  is set OK.

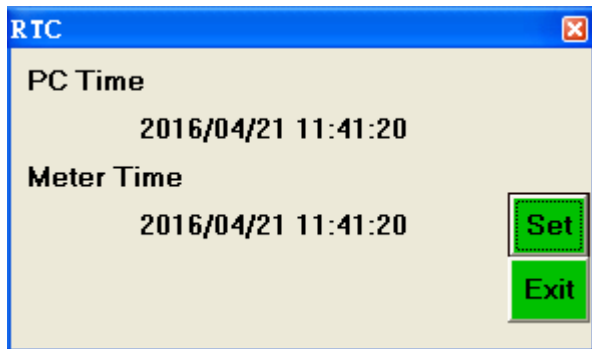


- **RTC (Real Time Clock)**

Click  on the **Menu Bar** to set the meter time to PC system time.



Click  Button. Show  is set OK.



- **Read SD Card**




Click  on the **Menu Bar** to Read SD card

| Memory | | |
|----------------------|---------------------|-------|
| Total Size | 6101 | |
| Remain Size | 5077 | |
| Load Complete | | |
| No.s | Date/Time | Index |
| 1 | 2018/02/09 10:55:21 | 1 |
| 2 | 2018/02/09 11:12:50 | 2 |
| 3 | 2018/02/09 11:15:31 | 3 |
| 4 | 2018/02/09 11:18:22 | 4 |
| 5 | 2018/02/09 11:23:27 | 5 |
| 6 | 2018/02/09 11:51:10 | 6 |
| 7 | 2018/02/09 11:51:33 | 7 |
| 8 | 2018/02/09 11:51:59 | 8 |
| 9 | 2018/02/09 11:52:25 | 9 |
| 10 | 2018/02/09 11:53:20 | 10 |
| 11 | 2018/02/09 11:54:08 | 11 |
| 12 | 2018/02/09 11:55:48 | 12 |
| 13 | 2018/03/13 16:08:59 | 13 |
| 14 | 2018/03/14 16:58:32 | 14 |

Click on a SET number to view the set's details.

The screenshot shows the 'Panel V10.02 - [DataList]' software interface. On the left is a sidebar with settings for 'RTC', 'Memory', 'Setting', 'Lcd contrast', 'Lcd APO', 'Pause', 'LED Alarm', 'DosiMeter', 'Auto Lock Keypad', 'Auto Scroll Screens', 'Timers', 'Screen', 'Input Text', 'Calibration', 'LunchTime', 'Record Interval Time', 'Clear Memory', and 'Other Option'. The main window displays a table with columns for 'No.s', 'Date/Time', 'LAVG', 'LEG', 'LCFK', and 'LZPK'. A 'Memory' dialog box is overlaid on the table, showing 'Total Size 6101', 'Remain Size 5621', and 'Load Complete'. The table data includes various noise measurement parameters like 'Start Date/Time', 'Stop Date/Time', 'Threshold', 'Criterion', 'Exchange Rate', 'Exceedance Level', 'Record Interval Time', 'Record Total Sets', 'Pw Duration', 'Duration', 'LAS > dB', 'Exceed StopTime', 'Dose', 'PDose', 'TWA', 'PTWA', 'LAVG', 'LEPd', 'PLEPd', 'LAEG', 'LCEQ', 'LZEO', 'LAE', and 'LCE'.

Click  button to Export PDF File.

Edit Download Data

Step 1 Select the data you want to delete

| | D1 | D2 | D3 |
|----------------------|---------------------------|---------------------------|---------------------------|
| Start Date/Time | 2020/03/16 11:16:49 | 2020/03/16 11:16:49 | 2020/03/16 11:16:49 |
| Stop Date/Time | 2020/03/16 13:26:08 | 2020/03/16 13:26:08 | 2020/03/16 13:26:08 |
| Threshold | 80 dB | 80 dB | 90 dB |
| Criterion | 90 dB | 90 dB | 90 dB |
| Exchange Rate | 5 dB | 5 dB | 5 dB |
| Exceedance Level | 105 dB | 105 dB | 105 dB |
| Record Interval Time | 1 Min | 1 Min | 1 Min |
| Record Total Sets | 130 | 130 | 130 |
| Pw Duration | 08:00:00 | 08:00:00 | 08:00:00 |
| Duration | 01:39:09 | 01:39:09 | 01:39:09 |
| LAS > dB | (>105)_01:23:05 | (>105)_01:23:05 | (>105)_01:23:05 |
| Exceed StopTime | 01:39:09 | 01:39:09 | 01:39:09 |
| Dose | 467.7 % | 467.7 % | 467.7 % |
| PDose | 2264.5 % | 2264.5 % | 2264.2 % |
| TWA | 101.1 dB | 101.1 dB | 101.1 dB |
| PTWA | 112.5 dB | 112.5 dB | 112.5 dB |
| LAVG | 112.5 dB | 112.5 dB | 112.5 dB |
| LEPd | 106.1 dB | 106.1 dB | 106.1 dB |
| PLEPd | 112.9 dB | 112.9 dB | 112.9 dB |
| LAEQ | 112.9 dB | 112.9 dB | 112.9 dB |
| LCEQ | 112.9 dB | 112.9 dB | 112.9 dB |
| LZEq | 113.0 dB | 113.0 dB | 113.0 dB |
| LAE | 150.7 dB | 150.7 dB | 150.7 dB |
| LCE | 150.7 dB | 150.7 dB | 150.7 dB |
| LZE | 150.8 dB | 150.8 dB | 150.8 dB |
| EA | 130.922 Pa ² h | 130.922 Pa ² h | 130.922 Pa ² h |

| No.s | Date/Time | LAVG | LEQ | LCPK | LZPK |
|------|---------------------|----------|----------|----------|----------|
| 1 | 2020/03/16 11:17:49 | 89.0 dB | 95.8 dB | 146.8 dB | 147.2 dB |
| 2 | 2020/03/16 11:18:49 | 98.9 dB | 100.9 dB | 146.6 dB | 147.0 dB |
| 3 | 2020/03/16 11:19:49 | 98.4 dB | 101.1 dB | 144.2 dB | 145.9 dB |
| 4 | 2020/03/16 11:20:49 | 81.9 dB | 89.1 dB | 135.9 dB | 136.9 dB |
| 5 | 2020/03/16 11:21:49 | 86.3 dB | 92.3 dB | 140.2 dB | 141.0 dB |
| 6 | 2020/03/16 11:22:49 | 85.8 dB | 91.7 dB | 140.6 dB | 142.3 dB |
| 7 | 2020/03/16 11:23:49 | 101.0 dB | 105.9 dB | 146.8 dB | 147.2 dB |
| 8 | 2020/03/16 11:24:49 | 80.0 dB | 87.3 dB | 136.1 dB | 137.3 dB |
| 9 | 2020/03/16 11:25:49 | 103.0 dB | 107.6 dB | 146.8 dB | 147.2 dB |
| 10 | 2020/03/16 11:26:49 | 108.2 dB | 110.0 dB | 143.1 dB | 145.8 dB |
| 11 | 2020/03/16 11:27:49 | 113.6 dB | 113.6 dB | 117.3 dB | 117.3 dB |
| 12 | 2020/03/16 11:28:49 | 113.6 dB | 113.6 dB | 117.5 dB | 117.5 dB |
| 13 | 2020/03/16 11:29:49 | 113.6 dB | 113.6 dB | 117.7 dB | 117.8 dB |
| 14 | 2020/03/16 11:30:49 | 113.6 dB | 113.6 dB | 118.1 dB | 118.3 dB |
| 15 | 2020/03/16 11:31:49 | 113.6 dB | 113.6 dB | 117.5 dB | 117.5 dB |
| 16 | 2020/03/16 11:32:49 | 113.6 dB | 113.6 dB | 117.5 dB | 117.6 dB |
| 17 | 2020/03/16 11:33:49 | 113.6 dB | 113.6 dB | 117.2 dB | 117.3 dB |
| 18 | 2020/03/16 11:34:49 | 113.6 dB | 113.6 dB | 117.3 dB | 117.5 dB |
| 19 | 2020/03/16 11:35:49 | 113.6 dB | 113.6 dB | 117.2 dB | 117.6 dB |
| 20 | 2020/03/16 11:36:49 | 113.6 dB | 113.6 dB | 117.6 dB | 117.7 dB |
| 21 | 2020/03/16 11:37:49 | 113.6 dB | 113.6 dB | 117.2 dB | 117.6 dB |
| 22 | 2020/03/16 11:38:49 | 113.6 dB | 113.6 dB | 117.2 dB | 117.3 dB |
| 23 | 2020/03/16 11:39:49 | 113.6 dB | 113.6 dB | 117.3 dB | 117.5 dB |
| 24 | 2020/03/16 11:40:49 | 113.6 dB | 113.6 dB | 117.2 dB | 117.3 dB |
| 25 | 2020/03/16 11:41:49 | 113.6 dB | 113.6 dB | 117.3 dB | 117.6 dB |
| 26 | 2020/03/16 11:42:49 | 113.6 dB | 113.6 dB | 117.4 dB | 117.6 dB |

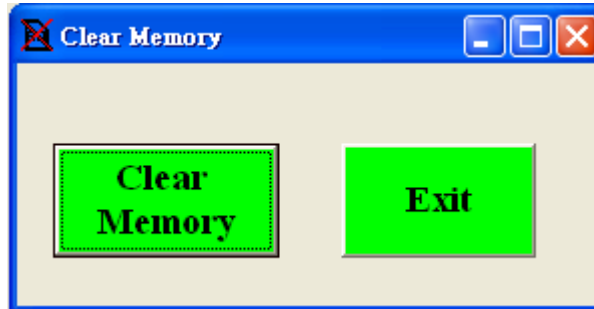
Step 2 Press the “Backspace” button


| | D1 | D3 |
|----------------------|---------------------------|---------------------------|
| Start Date/Time | 2020/03/16 11:16:49 | 2020/03/16 11:16:49 |
| Stop Date/Time | 2020/03/16 13:26:08 | 2020/03/16 13:26:08 |
| Threshold | 80 dB | 90 dB |
| Criterion | 90 dB | 90 dB |
| Exchange Rate | 5 dB | 5 dB |
| Exceedance Level | 105 dB | 105 dB |
| Record Interval Time | 1 Min | 1 Min |
| Record Total Sets | 130 | 130 |
| Pw Duration | 08:00:00 | 08:00:00 |
| Duration | 01:39:09 | 01:39:09 |
| LAS > dB | (>105)_01:23:05 | (>105)_01:23:05 |
| Exceed StopTime | 01:39:09 | 01:39:09 |
| Dose | 467.7 % | 467.7 % |
| PDose | 2264.5 % | 2264.2 % |
| TWA | 101.1 dB | 101.1 dB |
| PTWA | 112.5 dB | 112.5 dB |
| LAVG | 112.5 dB | 112.5 dB |
| LEPd | 106.1 dB | 106.1 dB |
| PLEPd | 112.9 dB | 112.9 dB |
| LAEQ | 112.9 dB | 112.9 dB |
| LCEQ | 112.9 dB | 112.9 dB |
| LZEq | 113.0 dB | 113.0 dB |
| LAE | 150.7 dB | 150.7 dB |
| LCE | 150.7 dB | 150.7 dB |
| LZE | 150.8 dB | 150.8 dB |
| EA | 130.922 Pa ² h | 130.922 Pa ² h |

| No.s | Date/Time | LAVG | LEQ | LCPK | LZPK |
|------|---------------------|----------|----------|----------|----------|
| 1 | 2020/03/16 11:17:49 | 89.0 dB | 95.8 dB | 146.8 dB | 147.2 dB |
| 2 | 2020/03/16 11:18:49 | 98.9 dB | 100.9 dB | 146.6 dB | 147.0 dB |
| 3 | 2020/03/16 11:19:49 | 98.4 dB | 101.1 dB | 144.2 dB | 145.9 dB |
| 4 | 2020/03/16 11:20:49 | 81.9 dB | 89.1 dB | 135.9 dB | 136.9 dB |
| 5 | 2020/03/16 11:21:49 | 86.3 dB | 92.3 dB | 140.2 dB | 141.0 dB |
| 6 | 2020/03/16 11:22:49 | 85.8 dB | 91.7 dB | 140.6 dB | 142.3 dB |
| 7 | 2020/03/16 11:23:49 | 101.0 dB | 105.9 dB | 146.8 dB | 147.2 dB |
| 8 | 2020/03/16 11:24:49 | 80.0 dB | 87.3 dB | 136.1 dB | 137.3 dB |
| 9 | 2020/03/16 11:25:49 | 103.0 dB | 107.6 dB | 146.8 dB | 147.2 dB |
| 10 | 2020/03/16 11:26:49 | 108.2 dB | 110.0 dB | 143.1 dB | 145.8 dB |
| 11 | 2020/03/16 11:27:49 | 113.6 dB | 113.6 dB | 117.3 dB | 117.3 dB |
| 12 | 2020/03/16 11:28:49 | 113.6 dB | 113.6 dB | 117.5 dB | 117.5 dB |
| 16 | 2020/03/16 11:32:49 | 113.6 dB | 113.6 dB | 117.5 dB | 117.6 dB |
| 17 | 2020/03/16 11:33:49 | 113.6 dB | 113.6 dB | 117.2 dB | 117.3 dB |
| 18 | 2020/03/16 11:34:49 | 113.6 dB | 113.6 dB | 117.3 dB | 117.5 dB |
| 19 | 2020/03/16 11:35:49 | 113.6 dB | 113.6 dB | 117.2 dB | 117.6 dB |
| 20 | 2020/03/16 11:36:49 | 113.6 dB | 113.6 dB | 117.6 dB | 117.7 dB |
| 21 | 2020/03/16 11:37:49 | 113.6 dB | 113.6 dB | 117.6 dB | 117.6 dB |
| 22 | 2020/03/16 11:38:49 | 113.6 dB | 113.6 dB | 117.2 dB | 117.3 dB |
| 23 | 2020/03/16 11:39:49 | 113.6 dB | 113.6 dB | 117.3 dB | 117.5 dB |
| 24 | 2020/03/16 11:40:49 | 113.6 dB | 113.6 dB | 117.2 dB | 117.3 dB |
| 25 | 2020/03/16 11:41:49 | 113.6 dB | 113.6 dB | 117.3 dB | 117.6 dB |
| 26 | 2020/03/16 11:42:49 | 113.6 dB | 113.6 dB | 117.4 dB | 117.6 dB |
| 27 | 2020/03/16 11:43:49 | 113.6 dB | 113.6 dB | 118.1 dB | 118.5 dB |
| 28 | 2020/03/16 11:44:49 | 113.6 dB | 113.6 dB | 117.3 dB | 117.4 dB |
| 29 | 2020/03/16 11:45:49 | 113.6 dB | 113.6 dB | 117.2 dB | 117.6 dB |

- **Delete SD Card File**

Click  on the **Menu Bar** to Erase SD card



Click  Button. Erase memory data.

- **Language**

Click  Button . Show

