



Main

Product or component type	Dv/dt filter
Range compatibility	Altivar&Nbsp;Process ATV900 Easy Altivar 610 Altivar&Nbsp;Process ATV600 Altivar Machine ATV340
Product specific application	Output filter
[In] rated current	15 A
Product compatibility	ATV630 variable speed drive wall mount - 3 kW, 380...480 V ATV630 variable speed drive wall mount - 4 kW, 380...480 V ATV630 variable speed drive wall mount - 5.5 kW, 380...480 V ATV630 variable speed drive wall mount - 1.5 kW, 200...240 V ATV630 variable speed drive wall mount - 2.2 kW, 200...240 V ATV630 variable speed drive wall mount - 3 kW, 200...240 V ATV650 variable speed drive wall mount - 3 kW, 380...480 V ATV650 variable speed drive wall mount - 4 kW, 380...480 V ATV650 variable speed drive wall mount - 5.5 kW, 380...480 V ATV610 variable speed drive - 3 kW, 380...415 V ATV610 variable speed drive - 4 kW, 380...415 V ATV610 variable speed drive - 5.5 kW, 380...415 V ATV930 variable speed drive wall mount - 3 kW, 380...480 V ATV930 variable speed drive wall mount - 4 kW, 380...480 V ATV930 variable speed drive wall mount - 5.5 kW, 380...480 V ATV930 variable speed drive wall mount - 1.5 kW, 200...240 V ATV930 variable speed drive wall mount - 2.2 kW, 200...240 V ATV930 variable speed drive wall mount - 3 kW, 200...240 V ATV950 variable speed drive wall mount - 3 kW, 380...480 V ATV950 variable speed drive wall mount - 4 kW, 380...480 V ATV950 variable speed drive wall mount - 5.5 kW, 380...480 V
Needed quantity	1
Electrical connection	Terminal block, connection capacity: 6 mm ² / AWG 10

Complementary

Maximum motor cable length	300 M unshielded cable 300 m shielded cable
Dv/dt	3000 V/μs max at 200...240 V 3000 V/μs max at 380...480 V
Thermal losses	38 W at 4 kHz
Maximum drive output frequency	100 Hz
Ambient air temperature for operation	-10...50 °C (without current derating) 50...60 °C (with current derating 1.5 % per °C)

The information provided in this documentation contains general descriptions and/or technical characteristics of the products contained herein. This documentation is not intended as a substitute for and is not to be used for determining suitability or reliability of these products for specific user applications. It is the duty of any such user or integrator to perform the appropriate and complete risk analysis, evaluation and testing of the products with respect to the relevant specific application or use thereof. Neither Schneider Electric Industries SAS nor any of its affiliates or subsidiaries shall be responsible or liable for misuse of the information contained herein.

Operating altitude	0...1000 m without current derating 1000...4000 m with current derating 1 % per 100 m
Width	295 mm
Height	535 mm
Depth	215 mm
Net weight	12 kg

Environment

IP degree of protection	IP20 IP21 (with kit VW3A53902)
Ambient air temperature for storage	-40...70 °C

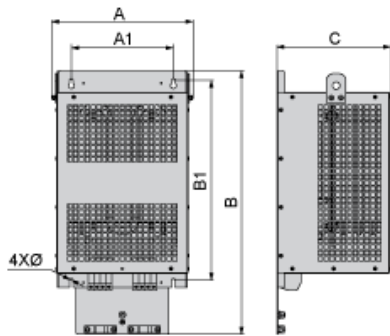
Packing Units

Unit Type of Package 1	PCE
Number of Units in Package 1	1
Package 1 Height	39.0 cm
Package 1 Width	59.0 cm
Package 1 Length	36.6 cm
Package 1 Weight	18.8 kg

Offer Sustainability

REACH Regulation	REACH Declaration
REACH free of SVHC	Yes
EU RoHS Directive	Pro-active compliance (Product out of EU RoHS legal scope) EU RoHS Declaration
Toxic heavy metal free	Yes
Mercury free	Yes
China RoHS Regulation	China RoHS Declaration
RoHS exemption information	Yes

Dimensions



Dimensions in mm

A	B	C	A1	B1	Ø
285	520	215	210	411	7

Dimensions in in.

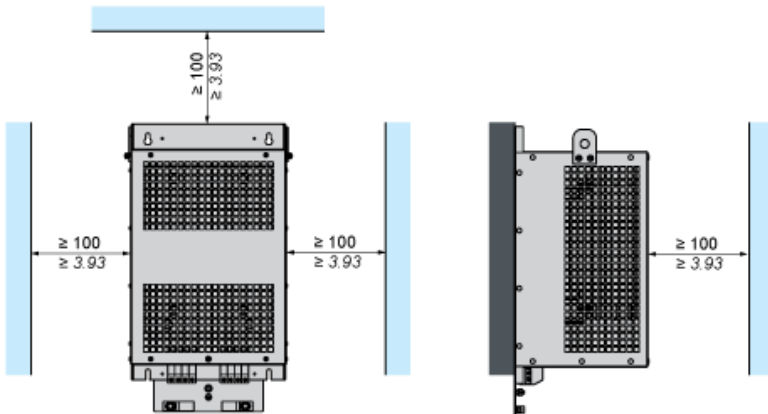
A	B	C	A1	B1	Ø
11.2	20.5	8.5	8.3	16.2	0.28

Mounting and Clearance

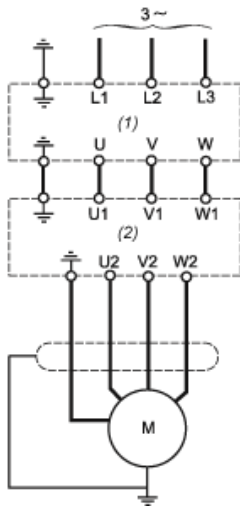


(1) Filter

$\frac{\text{mm}}{\text{in.}}$



Recommended Schema



- (1) Drive
- (2) Filter