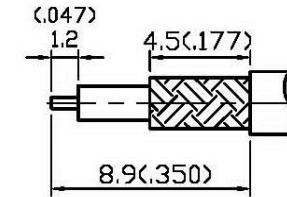
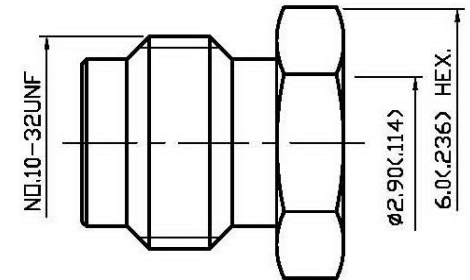
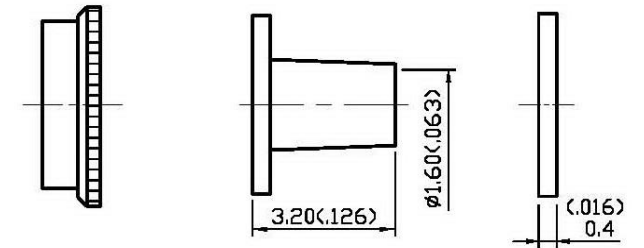
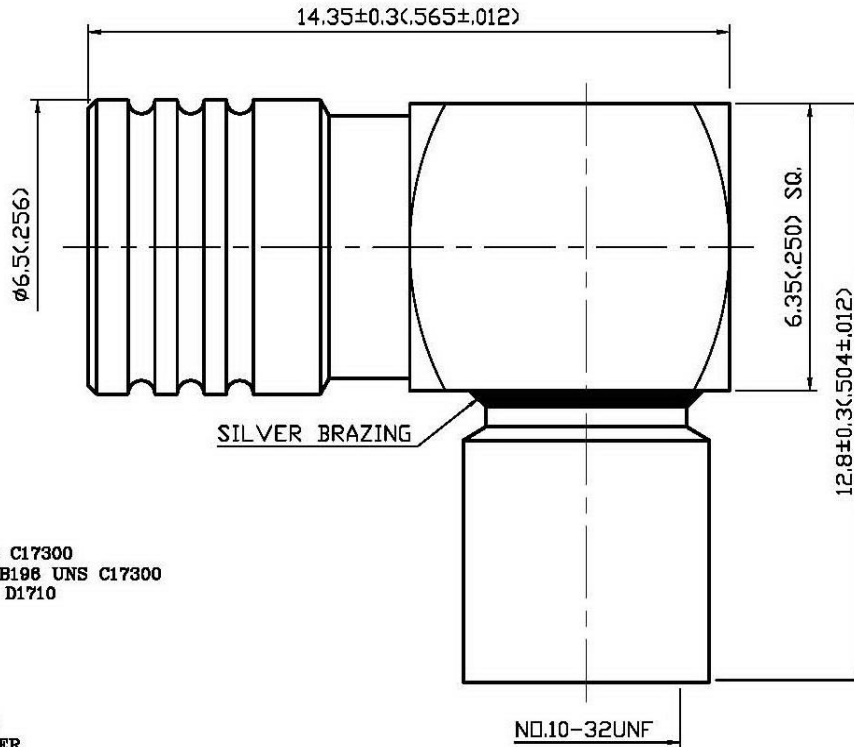


NO	DESCRIPTION	DATE
⚠	WORKING VOLTAGE → VOLTAGE RATING DEL. PROOF VOLTAGE	06.07.13'



STRIPPING DIMENSION
SCALE 4:1

1.0 ELECTRICAL

- 1.1 FREQUENCY RANGE: DC-4 GHz
- 1.2 NOMINAL IMPEDANCE: 50 OHMS
- 1.3 VOLTAGE RATING: 335 VOLTS MAX. ⚠
- 1.4 VSWR: 1.5 MAX.

2.0 MATERIALS

- 2.1 BODIES: BRASS PER JIS-C3604
BERYLLIUM COPPER PER ASTM B196 UNS C17300
- 2.2 CENTER CONTACT: BERYLLIUM COPPER PER ASTM B196 UNS C17300
- 2.3 INSULATION: TEFLON PER ASTM D1457 AND ASTM D1710

3.0 FINISHES AND OTHERS

- 3.1 SEE BELOW TABLE FOR DETAILS.

4.0 MECHANICAL

- 4.1 INTERFACE IN ACCORDANCE WITH: MIL-STD-348A
- 4.2 FOR USE WITH RG174U OR SIMILAR STYLE CABLE
- 4.3 CABLE ATTACHMENT: OUTER: CLAMP, INNER: SOLDER

5.0 ENVIRONMENTAL

- 5.1 OPERATING TEMPERATURE RANGE: -65° C TO +165° C

10	NUT	BRASS	1	GOLD 3 μ" MIN.
9	WASHER	BRASS	1	GOLD 3 μ" MIN.
8	BRAID CLAMP	BRASS	1	GOLD 3 μ" MIN.
7	CAP	BRASS	1	GOLD 3 μ" MIN.
6	CHASSIS	BRASS	1	GOLD 3 μ" MIN.
5	CENTER CONTACT	BERYLLIUM COPPER	1	GOLD 30 μ" MIN.
4	BODY	BRASS	1	GOLD 3 μ" MIN.
3	SHELL	BRASS	1	GOLD 3 μ" MIN.
2	INSULATION	TEFLON	1	NONE
1	SPRING WASHER	BERYLLIUM COPPER	1	GOLD
NO	DESCRIPTION	MATERIAL	Q' TY	FINISH



APPROVED

by _____ DATE: _____

DESCRIPTION		SMB RIGHT ANGLE PLUG CLAMP									
製圖	DRAWN	TOLERANCE		品名	24-27	T.G.G	174U	日期	DATE	版次	REV.
	Yoko	.X	±0.2	TITLE	ROHS COMPLIANT (50Ω)			01.05.00'		B-1	
檢圖	CHECK	.XX	±0.1	單位	mm(in)		DWG.NO.	24-0055			
	Arc	.XXX	±0.05	比例	SCALE						
認定	APPROVAL	Jenny	ANGLE	±5°							