

## FEATURES

- Rated Voltages 415V a.c./250V d.c.
- Breaking Capacities 80kA a.c. 40kA d.c.
- Breaking Range and Utilisation Category gG/gM

## RS PRO BS INDUSTRIAL FUSE-LINKS WITH BOLTED CONNECTIONS

RS Stock No.: 2213726, 2213727



RS Professionally Approved Products bring to you professional quality parts across all product categories. Our product range has been tested by engineers and provides a comparable quality to the leading brands without paying a premium price.

## Bolted Tag Fuses

### Product Description

Type SSA fuse-links are for use in industrial installations and can be fitted into BS88 bolted fuse-holders and distribution fusegear.

Dimensions and current ratings of the type SSA Industrial Fuse-Links comply with the standardized requirements of IEC 60269-2 and BS 88-2. Additional types and current ratings are included in the range. SSA Industrial Fuse-Links can be fitted in Boltin Fuse-Holders or suitable fusegear.

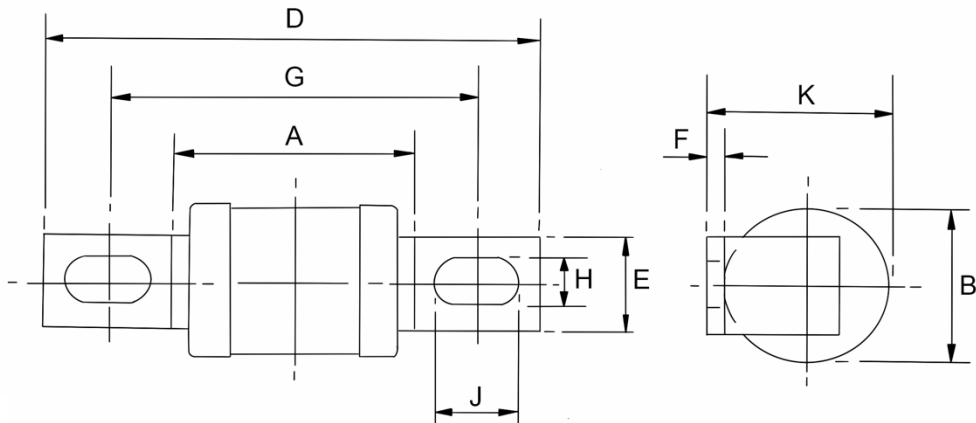
### General Specifications

Current Rating	63M100 A
Fuse Size	A3
Voltage Rating	250 V dc, 415 V ac
Fuse Standard	IEC 60269-2/BS 88-2
Fixing Centres	73 mm
Tag Width	9 mm
Overall Length	86 mm
Body Diameter	22 mm
Body Length	49 mm

### Approvals

Standards Met	IEC 60269-2/BS 88-2
---------------	---------------------

## Bolted Tag Fuses



Voltage Rating (V)	Current Rating (A)	Fig No.	Dimensions in millimetres								
			A max.	B max.	D max.	E nom.	F max.	G nom.	H nom.	J min.	K max.
415	63M100	1	49	26	89	13	1.2	73	5.5	8	28