

FEATURES

- Rated Voltages 415V a.c./250V d.c.
- Breaking Capacities 80kA a.c. 40kA d.c.
- Breaking Range and Utilisation Category gG/gM

RS PRO BS INDUSTRIAL FUSE-LINKS WITH BOLTED CONNECTIONS

RS Stock No.: 2213700, 2213701



RS Professionally Approved Products bring to you professional quality parts across all product categories. Our product range has been tested by engineers and provides a comparable quality to the leading brands without paying a premium price.

Slotted Tag Fuses

Product Description

Type “N” & “T” fuse-links are for use in industrial installations and can be fitted into BS88 bolted fuse-holders and distribution fusegear.

Dimensions and current ratings of the type N&T Industrial Fuse-Links comply with the standardized requirements of IEC 60269-2 and BS 88-2. Additional types and current ratings are included in the range. N&T Industrial Fuse-Links can be fitted in Boltin Fuse-Holders or suitable fusegear.

General Specifications

Current Rating	32A motor rated 63A
Fuse Size	A1
Voltage Rating	250 V dc, 415 V ac
Fuse Standard	IEC 60269-2/BS 88-2
Fixing Centres	44.5 mm
Tag Width	9.5 mm
Overall Length	56 mm
Body Diameter	12.7 mm
Body Length	33 mm

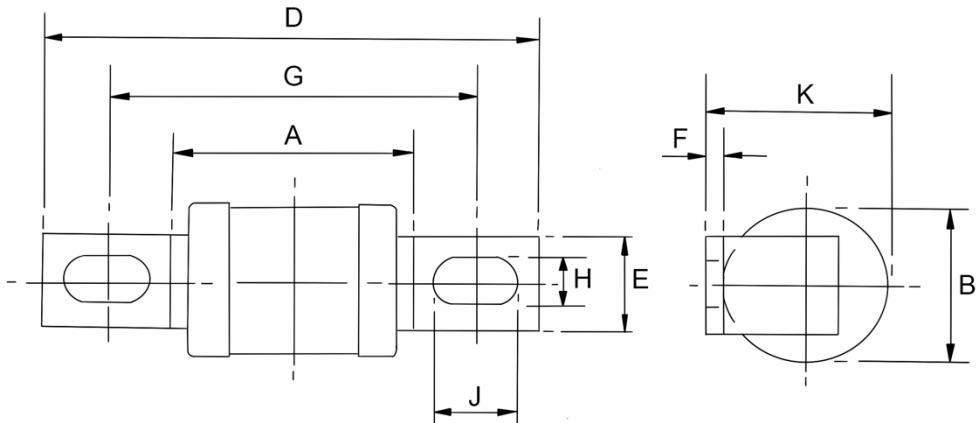
Approvals

Standards Met	IEC 60269-2/BS 88-2
----------------------	---------------------

Similar Products

Stock No.	Brand	Voltage Rating a.c. Volt	Current Rating Amps
(221-3702)	RS PRO	415	6
(221-3691)	RS PRO	415	10
(221-3693)	RS PRO	415	25
(221-3695)	RS PRO	415	40
(221-3698)	RS PRO	415	50

Slotted Tag Fuses



Voltage Rating (V)	Current Rating (A)	Fig No.	Dimensions in millimetres								
			A max.	B max.	D max.	E nom.	F max.	G nom.	H nom.	J min.	K max.
240	2-32	1	33	12.7	56	9.5	0.8	44.5	4.8	Open ended	14.3