

FEATURES

- VDE proofed
- Rigid PVC, white RAL 9010
- Dimensions available:
 - 15 x 15 mm
 - 18 x 18 mm
 - 30 x 30 mm
 - 40 x 40 mm
 - 60 x 40 mm
 - 60 x 60 mm
 - 90 x 60 mm
 - 110 x 60 mm
- 2 m length
- Base including cover
- Hardly-inflammable, self-extinguishing
- Perforated bottom
- Ideal for new installation or renovation
- Designed for the use of dividers from size 60x60 mm onwards
- Two cable holders included from size 60x40 mm onwards
- External and internal corners and end caps available from size 40x40mm onwards

RS PRO VDE Installation Trunking

Stock No: 221-5310, 221-5312, 221-5313, 221-5314, 221-5315, 221-5316, 221-5317, 221-5318, 221-5319, 221-5320, 221-5321, 221-5322, 221-5323, 221-5324, 221-5325



RS Professionally Approved Products bring to you professional quality parts across all product categories. Our product range has been tested by engineers and provides a comparable quality to the leading brands without paying a premium price.

Product Description

Product details:

- PVC installation trunking in white colour RAL 9010, with cover included
- For direct installation on wall and ceiling
- The material is hardly-inflammable and self-extinguishing
- The base with perforated bottom (distance 125 mm) allows an easy installation with screws
- Ideal for new installation or renovation
- The trunking is designed for the use of dividers from 60 x 60 mm onwards
- Two included cable holders per meter from 60 x 40 mm onwards for easy installation
- External corner parts, internal corner parts and end caps are available from size 40 x 40 mm onwards

General Specifications

Colour	White, RAL 9010
---------------	-----------------

Mechanical Specifications

Material	PVC (Polyvinylchlorid)
-----------------	-------------------------

Additional Information

EAN	
Custom Tariff Number	39259020

Approvals

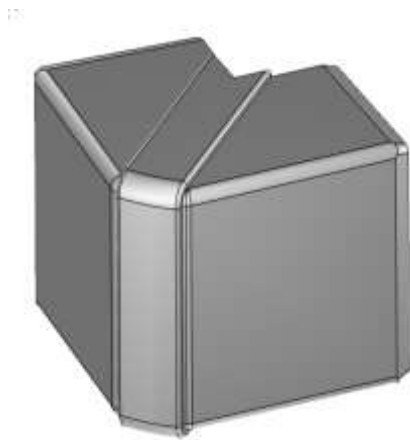
Standards	VDE proofed and certificated according DIN EN 50085-1 and DIN EN 50085-2-1
RoHS compliant	yes

Similar Products

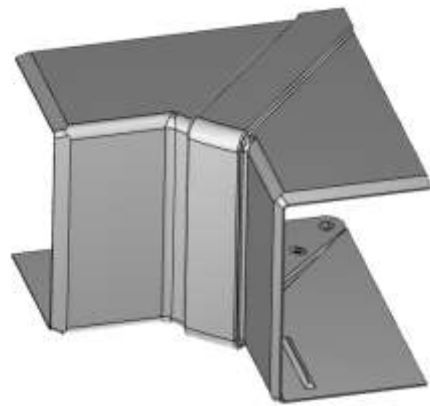
Stock No.	Product Name	Width	Height	Length / Piece	Packsize
221-3612	Installation Trunking	15 mm	15 mm	2000 mm	14 m
221-3614	Installation Trunking	18 mm	18 mm	2000 mm	16 m
221-3616	Installation Trunking	30 mm	30 mm	2000 mm	10 m
221-3621	Installation Trunking	40 mm	40 mm	2000 mm	8 m
221-3623	Installation Trunking	60 mm	40 mm	2000 mm	14 m
221-3626	Installation Trunking	60 mm	60 mm	2000 mm	8 m
221-3628	Installation Trunking	80 mm	60 mm	2000 mm	6 m
221-3631	Installation Trunking	110 mm	60 mm	2000 mm	4 m
Accessories					
	Divider	for use with trunking from 60 mm			10 m
221-5310	External Corner	for 40 x 40 mm trunking			1 piece
221-5312	Internal Corner	for 40 x 40 mm trunking			1 piece
221-5313	End Cap	for 40 x 40 mm trunking			1 piece
221-5314	External Corner	for 60 x 40 mm trunking			1 piece
221-5315	Internal Corner	for 60 x 40 mm trunking			1 piece
221-5316	End Cap	for 60 x 40 mm trunking			1 piece
221-5317	External Corner	for 60 x 60 mm trunking			1 piece
221-5318	Internal Corner	for 60 x 60 mm trunking			1 piece
221-5319	End Cap	for 60 x 60 mm trunking			1 piece
221-5320	External Corner	for 90 x 60 mm trunking			1 piece
221-5321	Internal Corner	for 90 x 60 mm trunking			1 piece
221-5322	End Cap	for 90 x 60 mm trunking			1 piece
221-5323	External Corner	for 110 x 60 mm trunking			1 piece
221-5324	Internal Corner	for 110 x 60 mm trunking			1 piece
221-5325	End Cap	for 110 x 60 mm trunking			1 piece

Accessories

External Corner



Internal Corner



End Cap



Divider



