

## FEATURES

- Rated Voltages 415V a.c./250V d.c.
- Breaking Capacities 80kA a.c. 40kA d.c.
- Breaking Range and Utilisation Category gG/gM

## RS PRO BS INDUSTRIAL FUSE-LINKS WITH BOLTED CONNECTIONS

RS Stock No.: 2213723, 2213724



RS Professionally Approved Products bring to you professional quality parts across all product categories. Our product range has been tested by engineers and provides a comparable quality to the leading brands without paying a premium price.

## Bolted Tag Fuses

### Product Description

Type SSA fuse-links are for use in industrial installations and can be fitted into BS88 bolted fuse-holders and distribution fusegear.

Dimensions and current ratings of the type SSA Industrial Fuse-Links comply with the standardized requirements of IEC 60269-2 and BS 88-2. Additional types and current ratings are included in the range. SSA Industrial Fuse-Links can be fitted in Boltin Fuse-Holders or suitable fusegear.

### General Specifications

|                |                     |
|----------------|---------------------|
| Current Rating | 32M50 A             |
| Fuse Size      | A2                  |
| Voltage Rating | 250 V dc, 415 V ac  |
| Fuse Standard  | IEC 60269-2/BS 88-2 |
| Fixing Centres | 73 mm               |
| Tag Width      | 9 mm                |
| Overall Length | 86 mm               |
| Body Diameter  | 22 mm               |
| Body Length    | 49 mm               |

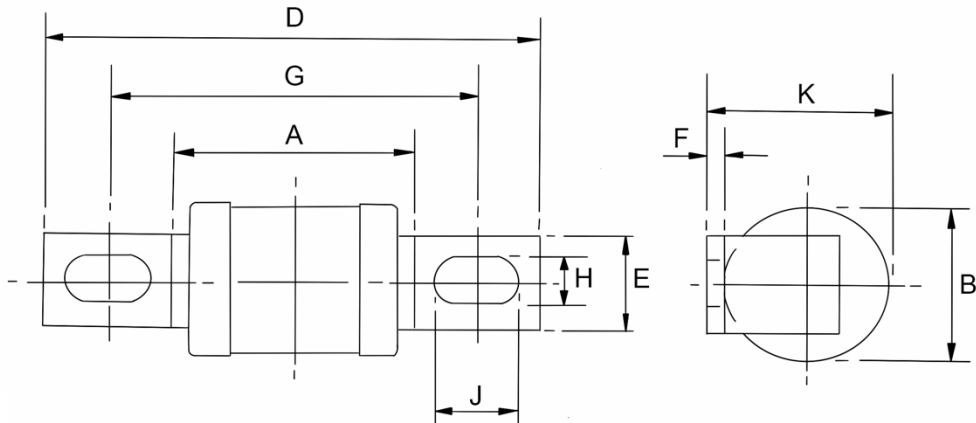
### Approvals

|               |                     |
|---------------|---------------------|
| Standards Met | IEC 60269-2/BS 88-2 |
|---------------|---------------------|

### Similar Products

| Stock No.  | Brand  | Voltage Rating a.c. Volt | Current Rating Amps |
|------------|--------|--------------------------|---------------------|
| (221-3721) | RS PRO | 415                      | 40                  |

## Bolted Tag Fuses



| Voltage Rating (V) | Current Rating (A) | Fig No. | Dimensions in millimetres |        |        |        |        |        |        |        |        |
|--------------------|--------------------|---------|---------------------------|--------|--------|--------|--------|--------|--------|--------|--------|
|                    |                    |         | A max.                    | B max. | D max. | E nom. | F max. | G nom. | H nom. | J min. | K max. |
| 415                | 32M40 & 32M50      | 1       | 49                        | 22     | 86     | 9      | 1.2    | 73     | 5.5    | 8      | 24     |