

Full Electric Reach Shop Crane-Counter Balance Type



- Electric Moving, Electric Lifting and,820mm moving forward and backward range makes the shop crane reach the objects easily.
- Foldable Packing for easy transportation and storage.
- Suitable for the area where the forklifts can not enter.
- Powerful Pump Station and big capacity of battery.
- Heavy Duty Design.



Max. Capacity 1500kg!



NLH01

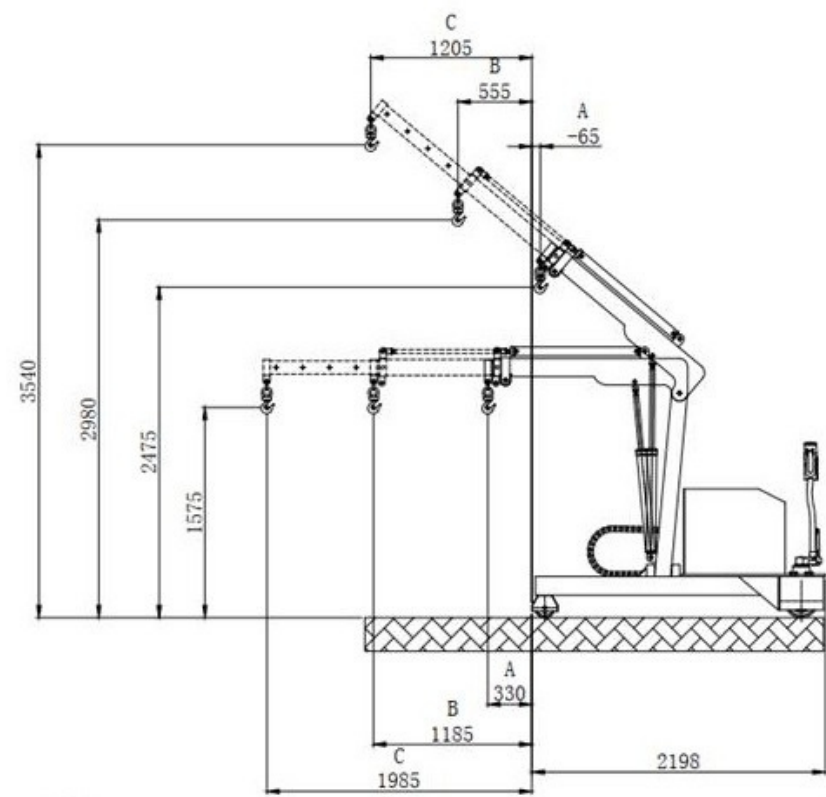


FIG 01

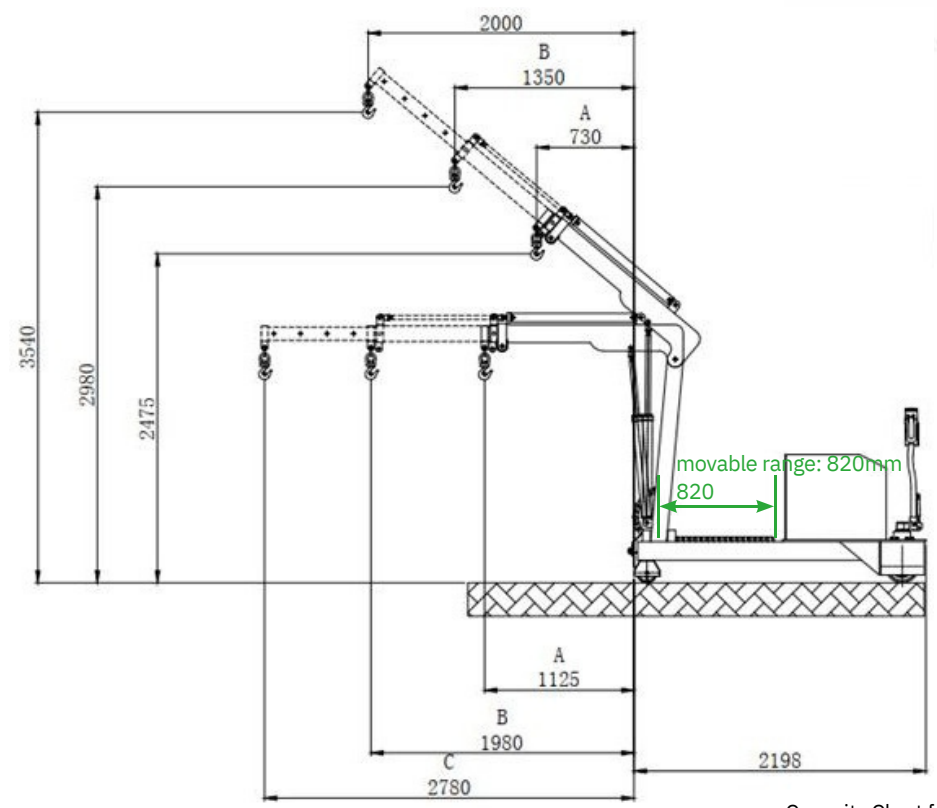


FIG 02



in use



in use



folded status for storage and delivery

Capacity Chart for Crane Moves Backward to Min.Distance (see FIG 01)

Tilting angle			A	B	C
0°	Dimension	(mm)	330	1185	1985
	Capacity	(kg)	1500	950	550
40°	Dimension	(mm)	-65	555	1205
	Capacity	(kg)	2000	1200	600

FIG 02

Tilting angle			A	B	C
0°	Dimension	(mm)	1440	2300	2500
	Capacity	(kg)	1000	342	290
40°	Dimension	(mm)	1004	1638	1787
	Capacity	(kg)	1100	265	430

Model		NLH01
Net Weight	(kg)	725
Balance Weight	(kg)	600
Battery Capacity	(V/Ah)	12V/120Ah x 2
Battery Size	(mm)	406x172x211
Battery Weight	(kg)	30x2
Lifting Motor	(mm)	2.2
Driving Motor	(mm)	0.75
Moving Speed	(km/h)	5
Overall Dimension	(mm)	2200x1015x1950
Front Wheel	(mm)	Ø150x70