



Datasheet

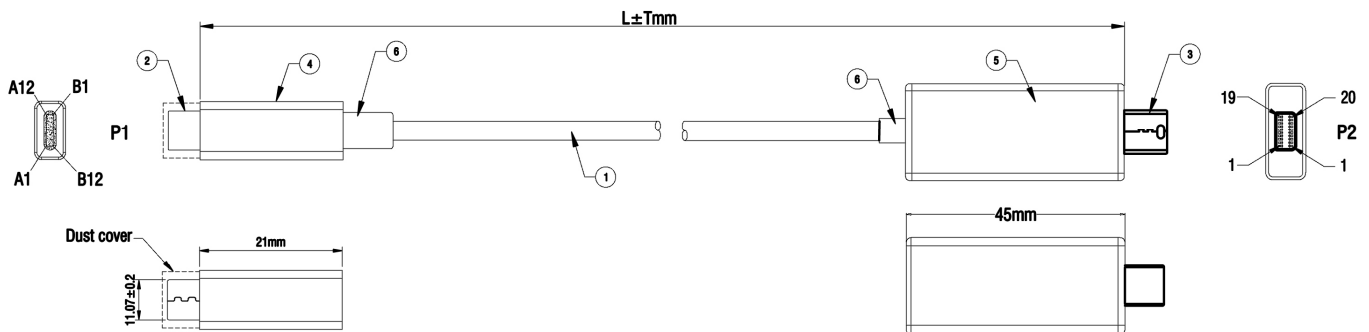
RS PRO 2m USB Type C to Mini DisplayPort Cable

Stock number: 192-4710

EN

The RS Pro 2m USB Type C to Mini DisplayPort display cable is designed to connect a device with a USB Type C socket (that supports DP Alt Mode) directly to your Mini DisplayPort monitor.

- Supports USB-C input and Mini DisplayPort output
- Supports DisplayPort 1.2 Alt-mode
- Supports per lane data rates of 5.4Gbps (HBR2), 2.7Gbps (HBR) and 1.62Gbps (RBR)
- Supports content protection of HDCP
- Supports DisplayPort resolution up to 3840x2160@60Hz
- USB bus power (no external power supply)



6	BLACK 45P PVC		G
5	Mini DP MALE SHELL(BLACK ABS)	1	PCS
4	USB Type-C MALE SHELL(BLACK ABS)	1	PCS
3	Mini DP MALE(Black Insulator,Gold Plated)+PCB/A	1	PCS
2	USB Type-C MALE(White Insulator,Gold Plated)	1	PCS
1	NON-UL,(32#*1P+D+AL/MY)*5+32#*4C+24#*2C+AL+B OD=4.8mm,BLACK TPE JACKET.	1	PCS

RoHS / REACH / CE

rspro.com

