



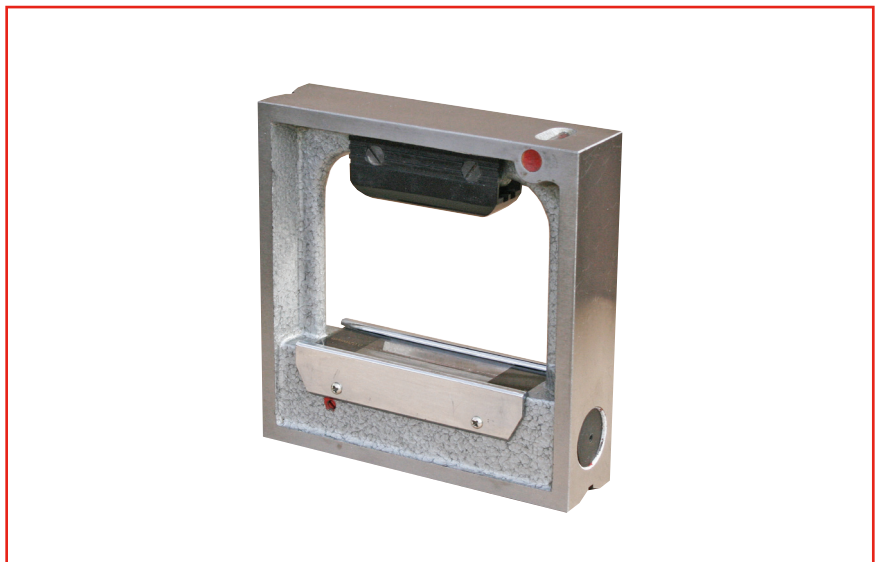
ENGLISH

Datasheet

RS Pro Precision Square Level

150 x 150 x 38mm

RS Stock No: 123-0933



Specifications:

Generally used to check the setting of the horizontal and vertical slide ways of machine tools.

Main Bubble Resolution:

0.02mm/1m = 4 seconds of arc

Cross bubble for general alignment

Ground flat base plus one upright side provided with a ground vee groove.

Order Code	Manufacturers Code	Description
123-0933	51-675-150	Precision Square Level 150 x 150 x 38mm



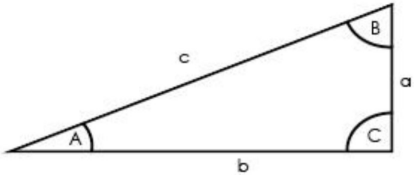
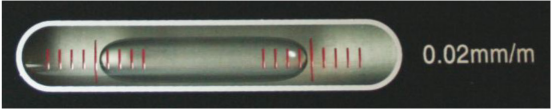
ENGLISH

Datasheet

RS Pro Precision Square Level

150 x 150 x 38mm

Sensitivity:

 <p>Bubble movement for 1 division marked on vial $A = 4'$ $c = 1 \text{ metre}$ $a = 0.02\text{mm}$</p>	<p>The sensitivity of these levels is defined as the change of gradient or angle required to move the bubble one division marked on the vial which is 0.02mm/m or $4'$ (seconds of arc)</p> 
--	--

Calibration:

All Precision Levels in this range are calibrated and preset at the factory prior to shipment
We however recommend that a calibration check is carried out following receipt of the new level and also at regular dates following continued use

How to Calibrate:

Equipment required: One adjustable mechanically stable flat surface, ideally a steel or granite surface table
The table need not be perfectly level but should be within the range of the instrument to be calibrated
Thoroughly clean the top surface of the table and the underside of the level
Place the level onto the table and allow the bubble to settle, this can take up to 15 seconds
Note the position of the bubble once it has settled
Turn the level through 180° ensuring it sits in the same footprint as the first position
Note the position of the bubble once it has settled in this second position

- A: If the Level and the Surface are both level the bubble will be in equally positioned between both graduation Scales
- B: If the Level is set correctly and the Surface is out of level the bubble will move in the same direction when turned through 180°
- C: If the Surface is correct and the Level is out of calibration the bubble will move in opposite directions when turned through 180°
- D: If both the Surface and the Level are out of level then the readings will be different when turned through 180°



ENGLISH

Datasheet

RS Pro Precision Square Level

150 x 150 x 38mm

How to calculate adjustments:

Example 1;

First bubble reading 3 divisions left
Move 180° second bubble reading 2 divisions right

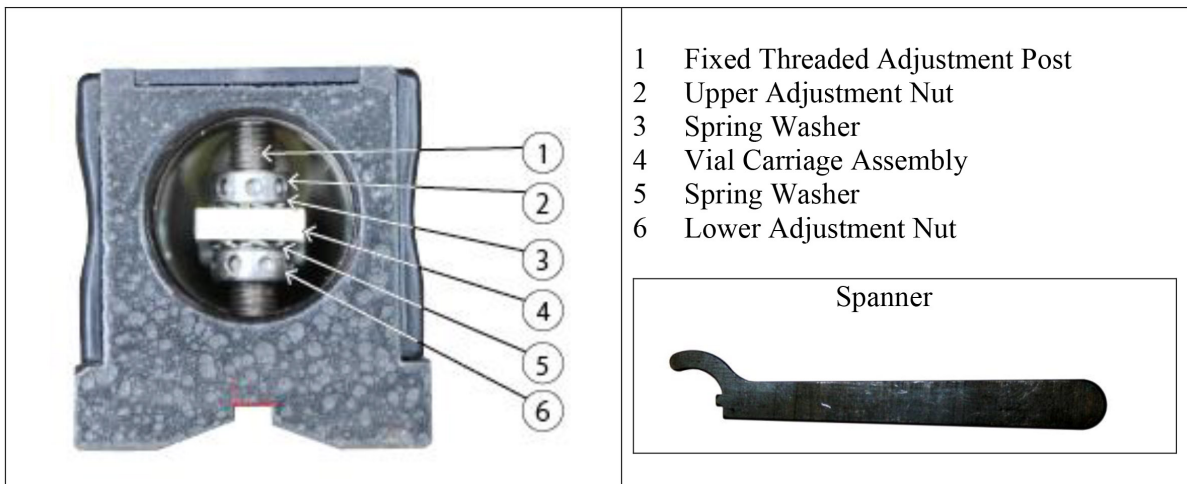
Level Error = Total Error \div 2 = $(3+2 = 5 \div 2) = 2.5$
Surface Error = Difference \div 2 = $(3-2 = 1 \div 2) = 0.5$

Example 2:

First bubble reading 4 divisions left
Move 180° second bubble reading 2 divisions left

Level Error = Total Error \div 2 = $(4-2 = 2 \div 2) = 1$
Surface Error = Difference \div 2 = $(4+2 = 6 \div 2) = 3$

How to make adjustments to the Level:



Remove the circular black plastic cap from the right hand end of the Level
Push the tip of the spanner through the central hole in the cap and pull



ENGLISH

Datasheet

RS Pro Precision Square Level

200 x 200 x 40mm

If the bubble is too far to the right the Vial Carriage Assembly (4) needs to be lowered
Insert the notch on the spanner into a hole situated around the circumference of the Lower Adjustment Nut (6)
Turn the Nut by a small amount in a clockwise direction
Now insert the spanner into the Upper Adjustment Nut and turn in a clockwise direction to clamp
Do not over tighten as there are spring washers which will apply the final locking pressure

Check the bubble for the required alignment against the scale.

It may be necessary to repeat this procedure of moving the Vial Carriage Assembly either up or down until the required bubble position is achieved

Once the nuts have been locked, replace the plastic end cap and the Level is ready for use.

Vee Location:

When using the Vee location to sit on a cylindrical part it is necessary to ensure that bubble in the small cross level vial is in the central position to ensure that the Level is sitting correctly