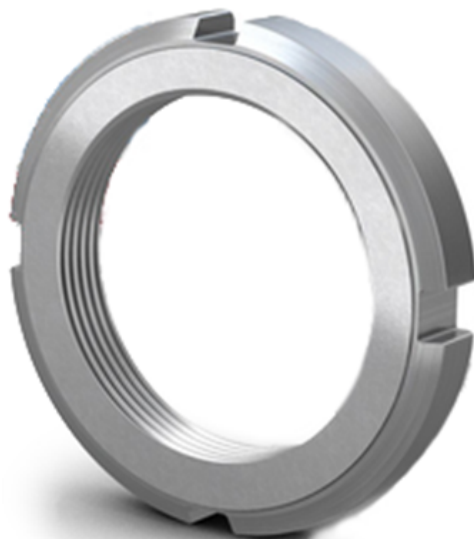


Datasheet

RS PRO Lock Nut M85x2mm

Stock No: 196-4164



Technical Specifications:

Id (mm)	85
Od (mm)	110
Width (mm)	16
Material	Steel

Features & Benefits:

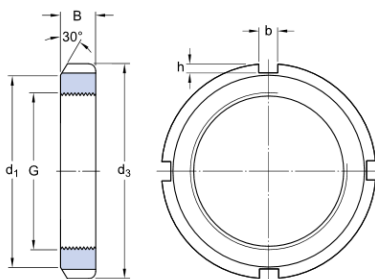
Locknuts are used to locate bearings on to a shaft. Additionally, they can be used to mount bearings with a tapered bore onto a tapered shaft seats and adapter sleeves, and to dismount bearings from withdrawal sleeves.

Lock Nuts with integral locking reduce the cost of the shaft as no keyway is required.

Installation is quicker and easier because no separate device is necessary.

Dimensional line drawings

Dimensions



G	M 20x1	
d ₃	32	mm
B	6	mm
d ₁	26	mm
b	4	mm
h	2	mm

Calculation data

Axial static load carrying capacity

24 kN

Mass

Mass lock nut

0.025 kg